


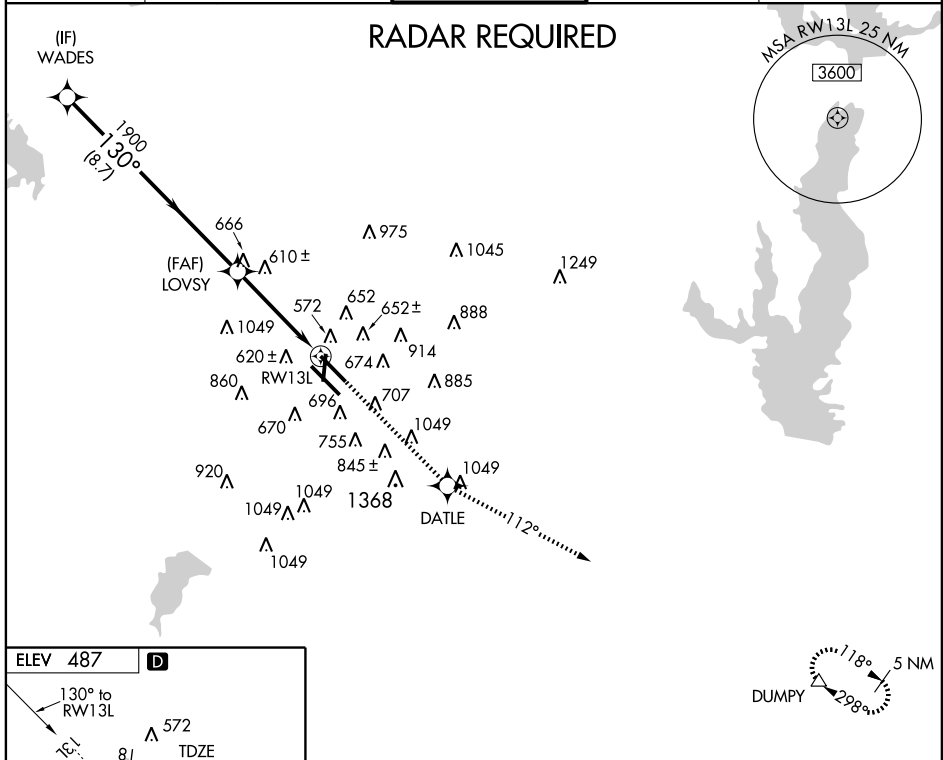
RNAV (GPS) Z RWY 13L

DALLAS-LOVE FIELD (DAL)

WAAS W13A	APP CRS 130°	Rwy ldg 7752 TDZE 485 Apt Elev 487
---------------------	------------------------	---

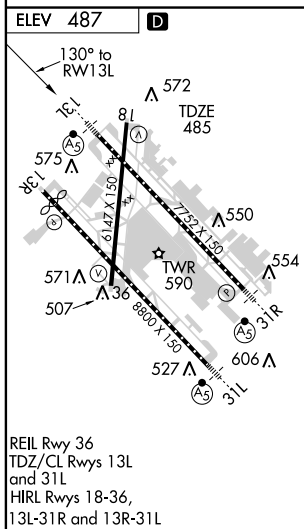
<p>▽ For uncompensated Baro-VNAV systems, LNAV/VNAV NA below -15°C (5°F) or above 47°C (116°F). DME/DME RNP-0.3 NA.</p> <p>▲</p>	<p>MALSR</p> 	<p>MISSED APPROACH: Climb to 5000 direct DATLE and via 112° TRK to DUMPY and hold, continue climb-in-hold to 5000.</p>
--	--	--

<p>ATIS 120.15</p>	<p>REGIONAL APP CON NORTH 124.3 282.275 SOUTH 125.2 343.65</p>	<p>LOVE TOWER 123.7 239.3</p>	<p>GND CON 121.75 348.6</p>	<p>CLNC DEL 127.9</p>
-------------------------------	--	--	--	----------------------------------



SC-2, 11 MAR 2010 to 08 APR 2010

SC-2, 11 MAR 2010 to 08 APR 2010



REIL Rwy 36
TDZ/CL Rwys 13L
and 31L
HIRL Rwys 18-36,
13L-31R and 13R-31L

ELEV 487	D				
<p>130° to RWY 13L</p> <p>575 Δ 86 Δ 572 Δ 550 Δ 554 Δ 571 Δ 507 Δ 527 Δ 606 Δ</p> <p>TDZE 485</p> <p>TWR 590</p> <p>31R</p> <p>31L</p> <p>880 x 130</p> <p>732 x 130</p> <p>6147 x 150</p>					
<p>WADES</p> <p>2500</p> <p>130°</p> <p>LOVSY</p> <p>1900</p> <p>DATLE</p> <p>5000</p> <p>RWY 13L</p> <p>DUMPY</p> <p>112° trk</p> <p>* 1.2 NM to RWY 13L</p> <p>* LNAV only</p>					
<p>GS 3.00°</p> <p>TCH 50</p> <p>8.7 NM</p> <p>3 NM</p> <p>1.2</p>					
CATEGORY	A	B	C	D	
LNAV/VNAV DA	946/60 461 (500-1¼)				
LNAV MDA	920/24	435 (500-½)	920/40 435 (500-¾)	920/50 435 (500-1)	
CIRCLING	1020-1½ 533 (600-1½)			1160-2½ 673 (700-2½)	