

RNAV (GPS) Z RWY 13R

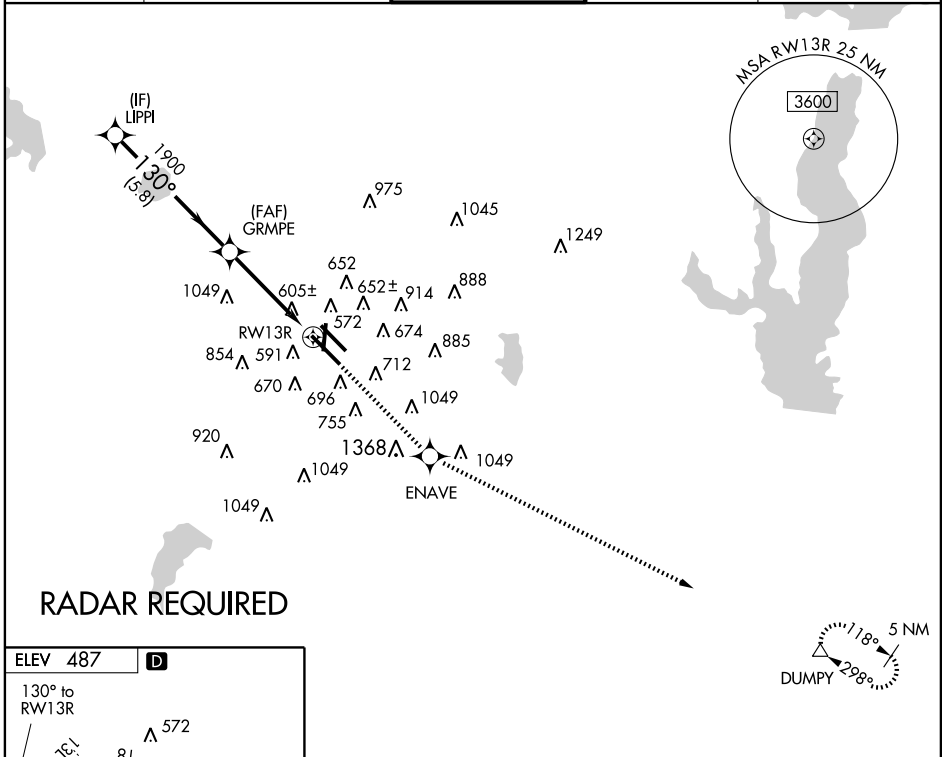
DALLAS-LOVE FIELD (DAL)

APP CRS 130°	Rwy Idg 8310
	TDZE 478
	Apt Elev 487

▼ For uncompensated Baro-VNAV systems, LNAV/VNAV NA below -15°C (5°F) or above 47°C (116°F). DME/DME RNP-0.3 NA.

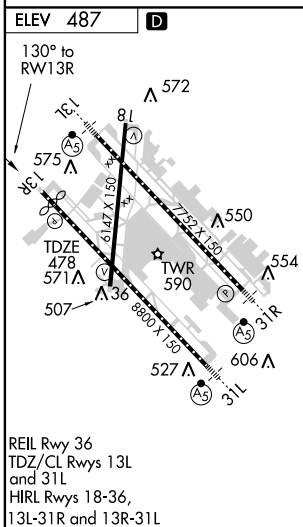
▲ MISSED APPROACH: Climb to 5000 direct ENAVE and via 111° track to DUMPY and hold, continue climb-in-hold to 5000.

ATIS 120.15	REGIONAL APP CON NORTH 124.3 282.275 SOUTH 125.2 343.65	LOVE TOWER 123.7 239.3	GND CON 121.75 348.6	CLNC DEL 127.9
-----------------------	---	----------------------------------	--------------------------------	--------------------------



SC-2, 19 NOV 2009 to 17 DEC 2009

SC-2, 19 NOV 2009 to 17 DEC 2009



DALLAS, TEXAS
Orig-A 09239

ELEV 487	D				
LIPPI	GRMPE	5000	ENAVE	111° TRK	DUMPY
2500		↑	✧	↖	△
					*LNAV only
			*2.3 NM to RWY13R		
GS 3.00°					
TCH 53					
		5.8 NM	2 NM	2.3 NM	
CATEGORY	A	B	C	D	
LNAV/VNAV DA	946-1 ³ / ₄ 468 (500-1 ³ / ₄)				
LNAV MDA	1260-1 782 (800-1)	1260-1 ¹ / ₄ 782 (800-1 ¹ / ₄)	1260-2 ¹ / ₄ 782 (800-2 ¹ / ₄)	1260-2 ¹ / ₂ 782 (800-2 ¹ / ₂)	
CIRCLING	1260-1 ¹ / ₂	773 (800-1 ¹ / ₂)	1260-2 ¹ / ₄ 773 (800-2 ¹ / ₄)	1260-2 ¹ / ₂ 773 (800-2 ¹ / ₂)	

32° 51' N - 96° 51' W

RNAV (GPS) Z RWY 13R

DALLAS-LOVE FIELD (DAL)