

RNAV (GPS) Z RWY 13R

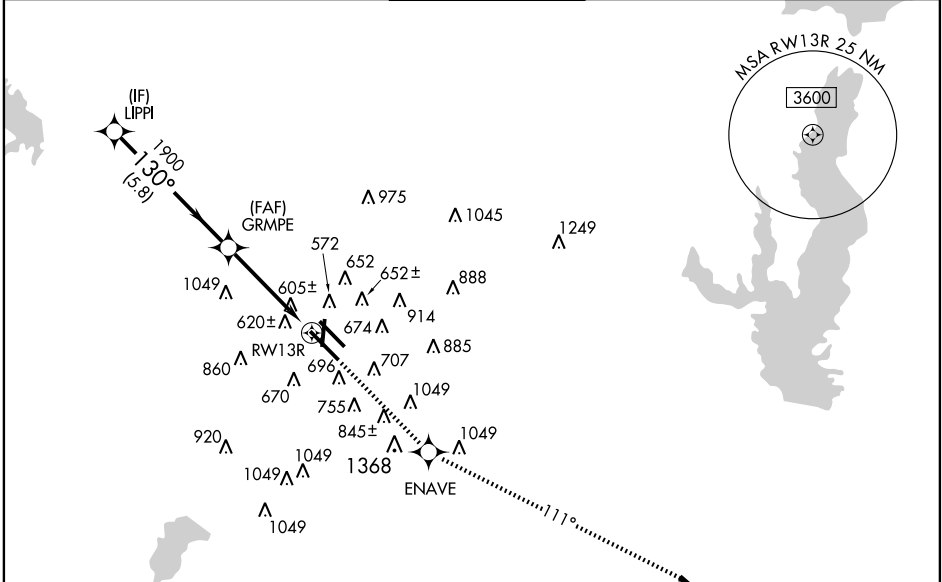
DALLAS-LOVE FIELD (DAL)

APP CRS 130°	Rwy Idg 8310
	TDZE 478
	Apt Elev 487

▼ For uncompensated Baro-VNAV systems, LNAV/VNAV NA below -15°C (5°F) or above 47°C (116°F). DME/DME RNP-0.3 NA.

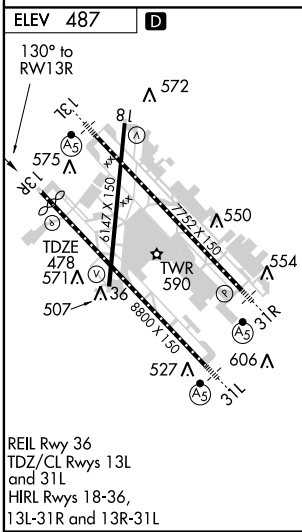
▲ MISSED APPROACH: Climb to 5000 direct ENAVE and via 111° track to DUMPY and hold, continue climb-in-hold to 5000.

ATIS 120.15	REGIONAL APP CON NORTH 124.3 282.275 SOUTH 125.2 343.65	LOVE TOWER 123.7 239.3	GND CON 121.75 348.6	CLNC DEL 127.9
-----------------------	---	----------------------------------	--------------------------------	--------------------------



SC-2, 11 MAR 2010 to 08 APR 2010

SC-2, 11 MAR 2010 to 08 APR 2010



DALLAS, TEXAS
Orig-A 10042

LIPPI 2500 GS 3.00° TCH 53	GRMPE 130° 1900 *2.3 NM to RWY13R RWY13R *LNAV only			
	5000 ENAVE 111° trk DUMPY			
CATEGORY	A	B	C	D
LNAV/VNAV DA	946-1 ³ / ₄ 468 (500-1 ³ / ₄)			
LNAV MDA	1260-1 782 (800-1)	1260-1 ¹ / ₄ 782 (800-1 ¹ / ₄)	1260-2 ¹ / ₄ 782 (800-2 ¹ / ₄)	1260-2 ¹ / ₂ 782 (800-2 ¹ / ₂)
CIRCLING	1260-1 ¹ / ₂	773 (800-1 ¹ / ₂)	1260-2 ¹ / ₄ 773 (800-2 ¹ / ₄)	1260-2 ¹ / ₂ 773 (800-2 ¹ / ₂)

32° 51' N - 96° 51' W

RNAV (GPS) Z RWY 13R

DALLAS-LOVE FIELD (DAL)