

DILLON, MONTANA

AL-121 (FAA)

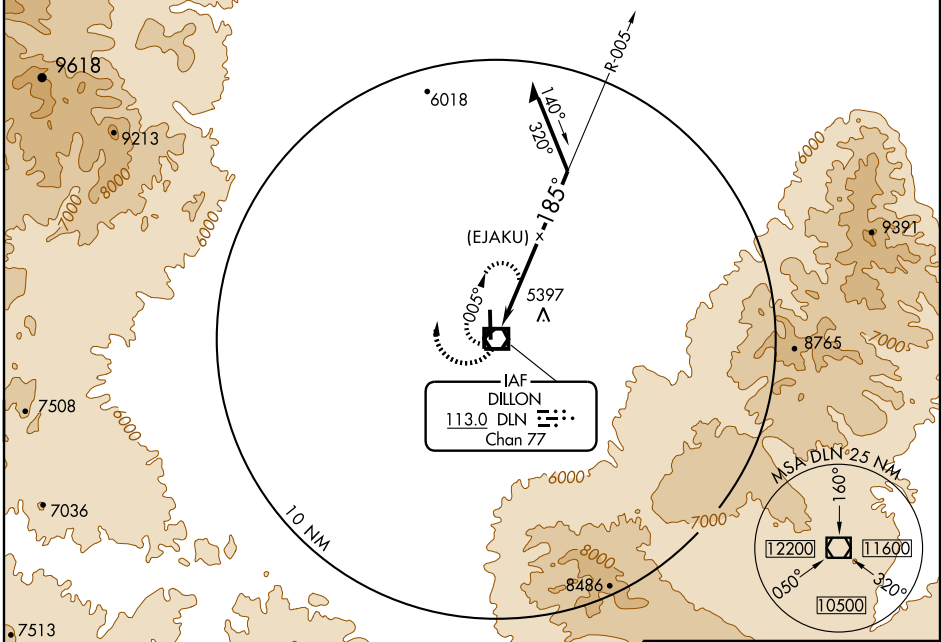
VOR or GPS-A DILLON (DLN)

VOR/DME DLN 113.0 Chan 77	APP CRS 185°	Rwy ldg TDZE Apt Elev 5241	N/A N/A 5241
--	------------------------	--------------------------------------	--------------------

Procedure not authorized when Dillon altimeter setting not available.

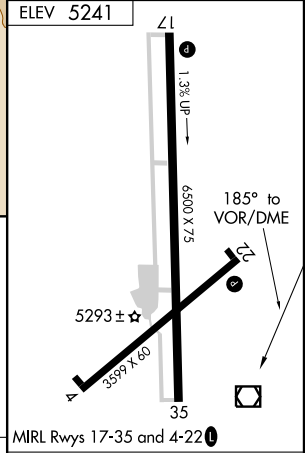
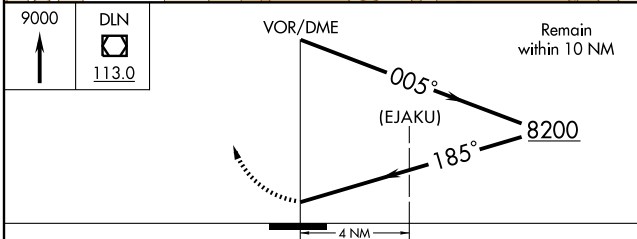
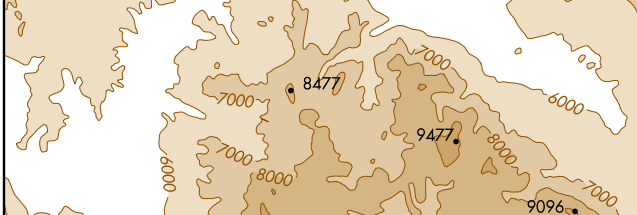
MISSED APPROACH: Climb to 9000 in DLN VOR/DME holding pattern.

ASOS 135.225	SALT LAKE CENTER 132.4 338.3	UNICOM 122.8 (CTAF)
------------------------	--	-------------------------------



NW-1, 11 MAR 2010 to 08 APR 2010

NW-1, 11 MAR 2010 to 08 APR 2010



CATEGORY	A	B	C	D
CIRCLING	6700-1¼ 1462 (1500-1¼)	6700-1½ 1462 (1500-1½)	6700-3	1462 (1500-3)

ELEV 5241	DLN 113.0				
Knots	60	90	120	150	180
Min:Sec					

DILLON, MONTANA
Amdt 7 09351

45°15'N-112°33'W

DILLON (DLN) VOR or GPS-A