

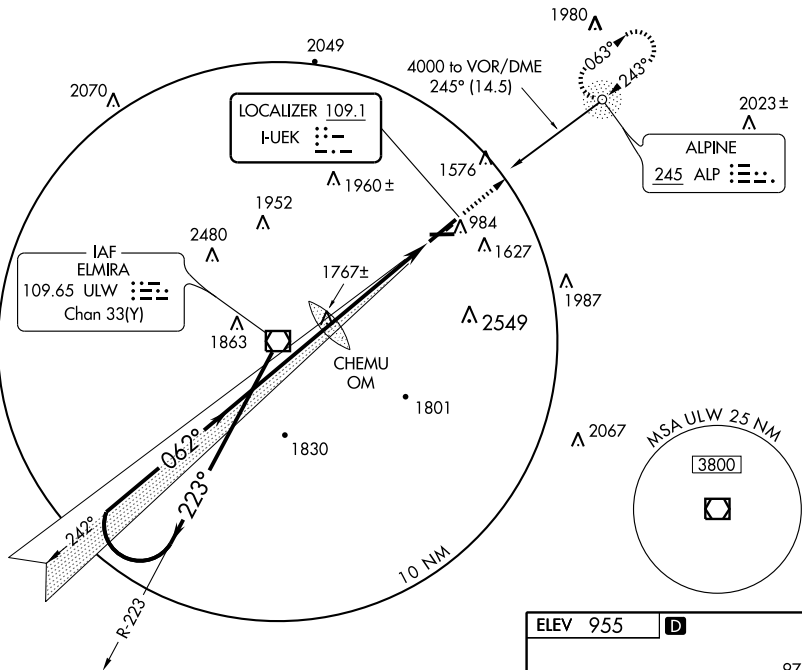
# ILS RWY 6

ELMIRA/CORNING RGNL (ELM)

LOC I-UEK <b>109.1</b>	APP CRS <b>062°</b>	Rwy Idg TDZE Apt Elev	<b>6999</b> <b>944</b> <b>955</b>
---------------------------	------------------------	-----------------------------	---

	MALS R	MISSED APPROACH: Climb to 3600 direct to ALP NDB and hold.

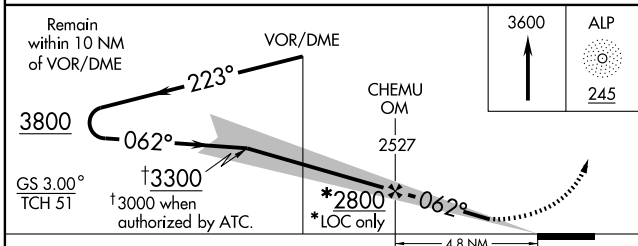
ATIS <b>125.475</b>	ELMIRA APP CON ★ <b>119.45 257.8</b>	ELMIRA TOWER ★ <b>121.1 (CTAF) 257.8</b>	GND CON <b>121.9</b>	UNICOM <b>122.95</b>
------------------------	---	---	-------------------------	-------------------------



NE-2, 11 MAR 2010 to 08 APR 2010

NE-2, 11 MAR 2010 to 08 APR 2010

## ADF REQUIRED



ELEV 955	D
----------	---

TWR 1027  
 TDZE 944  
 062° 4.8 NM from FAF  
 HIRL Rwy 6-24  
 MIRL Rwy 10-28  
 FAF to MAP 4.8 NM

Knots	60	90	120	150	180
Min:Sec	4:48	3:12	2:24	1:55	1:36

CATEGORY	A	B	C	D
S-ILS 6		1144-1/2 200 (200-1/2)		
S-LOC 6	2020-3/4 1076 (1100-3/4)	2020-1 1076 (1100-1)	2020-2 1/2 1076 (1100-2 1/2)	
CIRCLING	2060-1 1/4 1105 (1200-1 1/4)	2120-1 1/2 1165 (1200-1 1/2)	2140-3 1185 (1200-3)	