

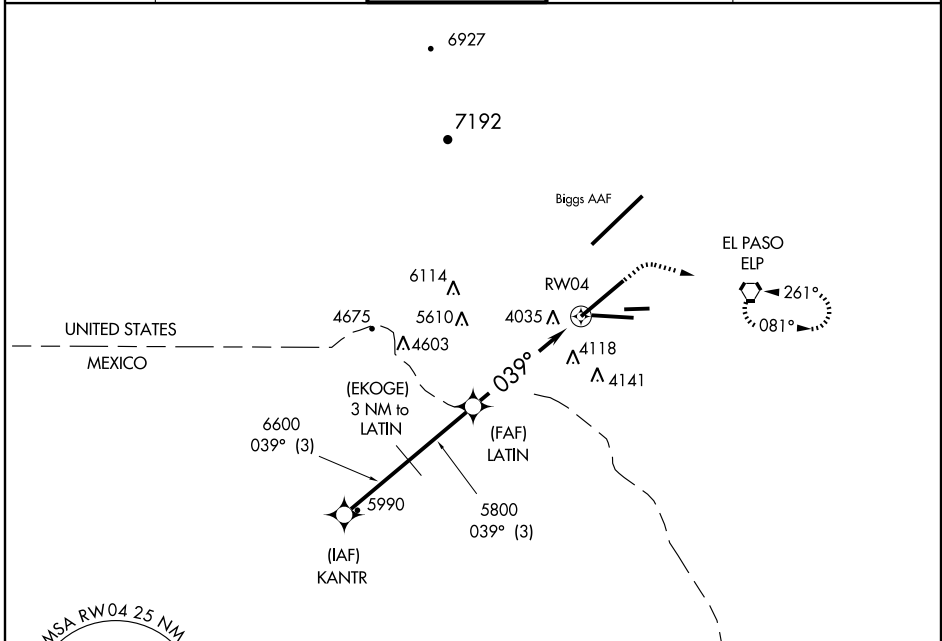
GPS RWY 4

EL PASO INTL (ELP)

APP CRS 039°	Rwy Idg 12020
	TDZE 3923
	Apt Elev 3959

MISSED APPROACH: Climb to 4500 then climbing right turn to 6700 direct ELP VORTAC and hold.

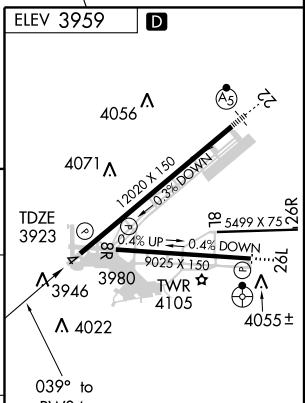
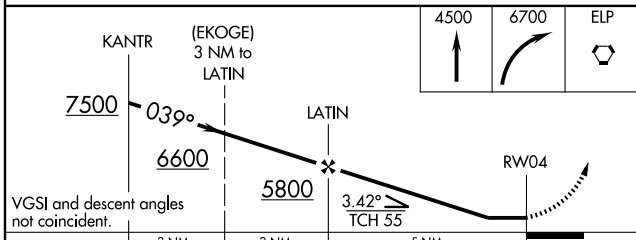
ATIS 120.0 254.3	EL PASO APP CON 124.25 298.85	EL PASO TOWER 118.3 239.275	GND CON 121.9 348.6	CLNC DEL 125.0 379.1
----------------------------	---	--	-------------------------------	--------------------------------



SC-3, 11 MAR 2010 to 08 APR 2010

SC-3, 11 MAR 2010 to 08 APR 2010

RADAR REQUIRED



CATEGORY	A	B	C	D
S-4	4320-1 397 (400-1)		4320-1 ¼ 397 (400-1 ¼)	
CIRCLING	4420-1	462 (500-1)	4420-1 ½ 462 (500-1 ½)	4520-2 562 (600-2)

MIRL Rwy 8L-26R
REIL Rwys 4 and 8R
HIRL Rwys 4-22 and 8R-26L