

RNAV (GPS) RWY 22

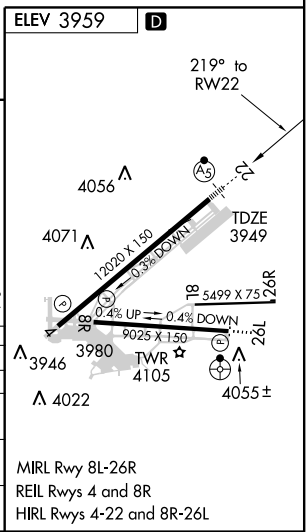
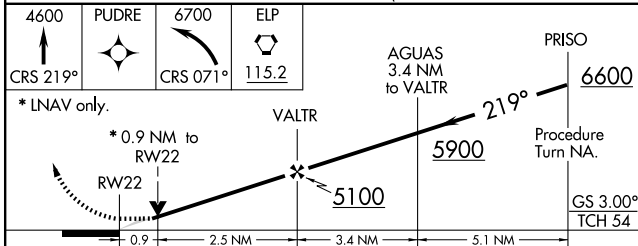
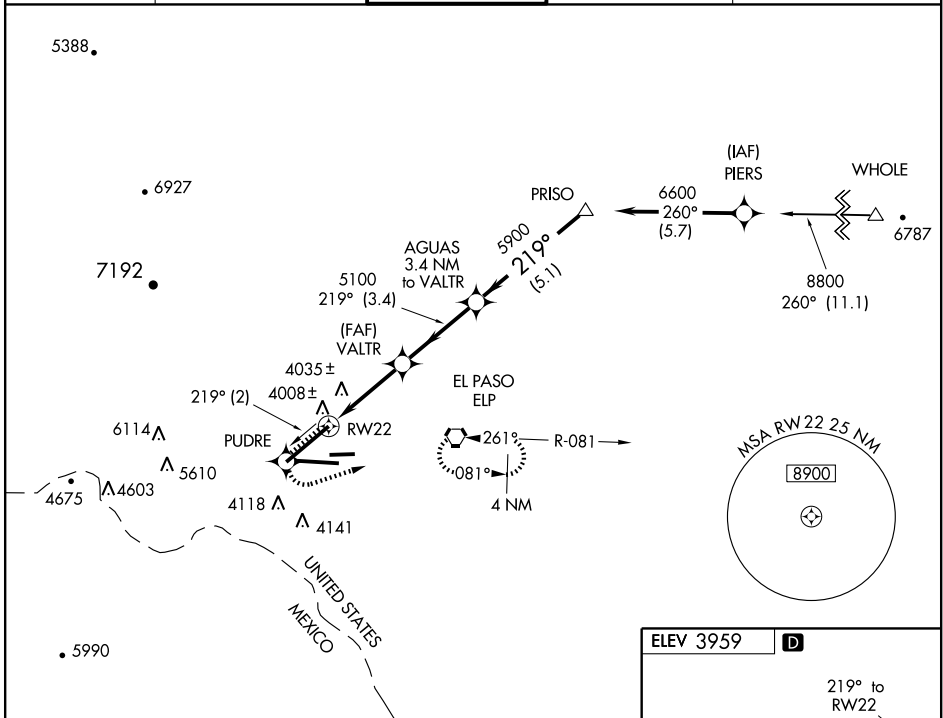
EL PASO INTL (ELP)

APP CRS 219°	Rwy Idg 12020
	TDZE 3949
	Apt Elev 3959

ASR DME/DME RNP-0.3 not authorized. For uncompensated Baro-VNAV, systems, LNAV/VNAV NA below -22°C (-7°F) or above 40°C (104°F). For inoperative MALSRS increase LNAV/VNAV Cat D visibility to RVR 5000 and LNAV Cat D to RVR 6000.

MALSRS MISSED APPROACH: Climb to 4600 via 219° course to PUDRE then climbing left turn via 071° course to 6700 to ELP VORTAC and hold.

ATIS 120.0 254.3	EL PASO APP CON 124.25 298.85	EL PASO TOWER 118.3 239.275	GND CON 121.9 348.6	CLNC DEL 125.0 379.1
----------------------------	---	---------------------------------------	-------------------------------	--------------------------------



CRS 219°	PUDRE	CRS 071°	ELP	115.2
* LNAV only.				
RW22		VALTR	AGUAS 3.4 NM to VALTR	PRISO
0.9		2.5 NM	3.4 NM	5.1 NM
GS 3.00°		Procedure Turn NA.		
TCH 54				
CATEGORY	NA			
GLS PA DA				
LNAV/VNAV DA	4273/24	324 (400-½)	4273/40 324 (400-¾)	
LNAV MDA	4300/24	351 (400-½)	4300/50 351 (400-1)	
CIRCLING	4420-1	462 (500-1)	4420-1½ 462 (500-1½)	4520-2 562 (600-2)

SC-3, 19 NOV 2009 to 17 DEC 2009

SC-3, 19 NOV 2009 to 17 DEC 2009