

RNAV (GPS) RWY 26L

EL PASO INTL (ELP)

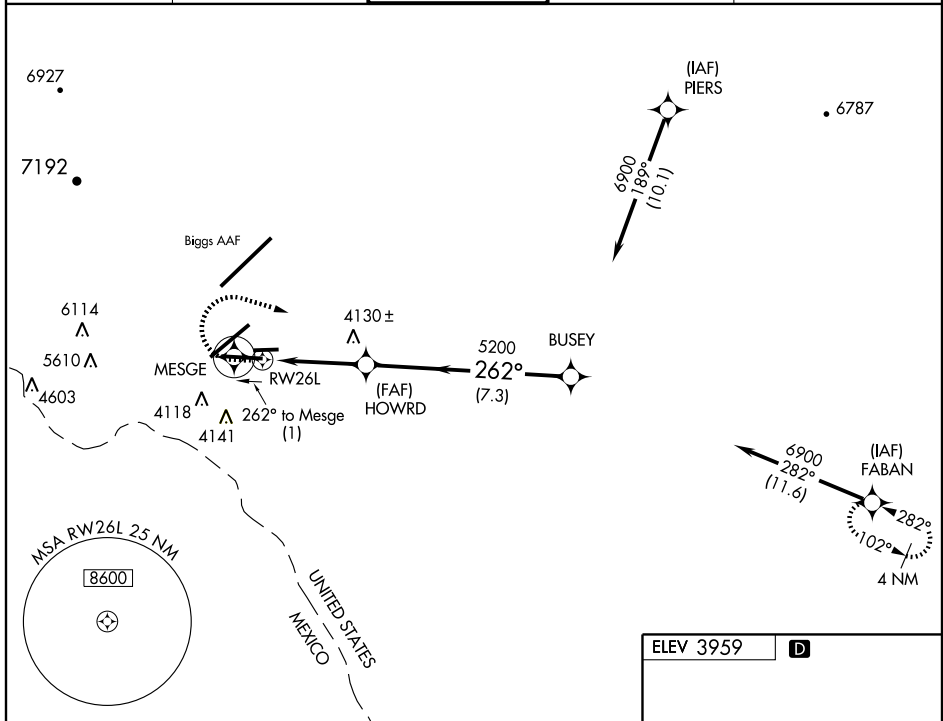
APP CRS 262°	Rwy Idg 9025
	TDZE 3959
	Apt Elev 3959

▽ Baro-VNAV NA below -22°C (-7°F).
△NA GPS or RNP-0.3 Required. DME/DME RNP-0.3 NA.
 Inoperative table does not apply to LNAV/VNAV Cats A-D.
ASR Inoperative table does not apply to LNAV Cat C.

ODALS

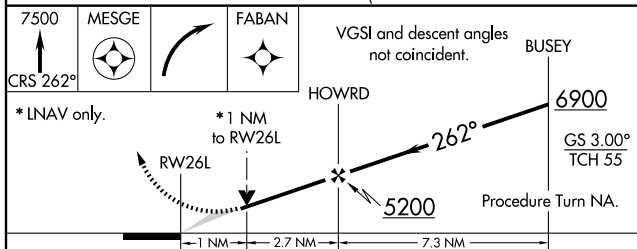
MISSED APPROACH: Climb to 7500 via 262° course to MESGE then right turn direct FABAN and hold.

ATIS 120.0 254.3	EL PASO APP CON 124.25 298.85	EL PASO TOWER 118.3 239.275	GND CON 121.9 348.6	CLNC DEL 125.0 379.1
----------------------------	---	---------------------------------------	-------------------------------	--------------------------------

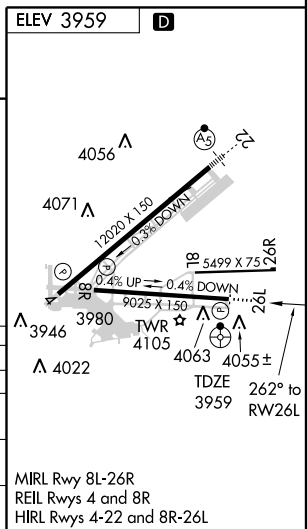


SC-3, 19 NOV 2009 to 17 DEC 2009

SC-3, 19 NOV 2009 to 17 DEC 2009



CATEGORY	A	B	C	D
GLS PA DA	NA			
LNAV/VNAV DA	4320-1¼		362 (400-1¼)	
LNAV MDA	4360-¾ 402 (500-¾)		4360-1¼ 402 (500-1¼)	
CIRCLING	4420-1¼ 462 (500-1¼)		4420-1½ 462 (500-1½) 4520-2 562 (600-2)	



MIRL Rwy 8L-26R
 REIL Rwy 4 and 8R
 HIRL Rwy 4-22 and 8R-26L