

ILS or LOC RWY 22

EL PASO INTL (ELP)

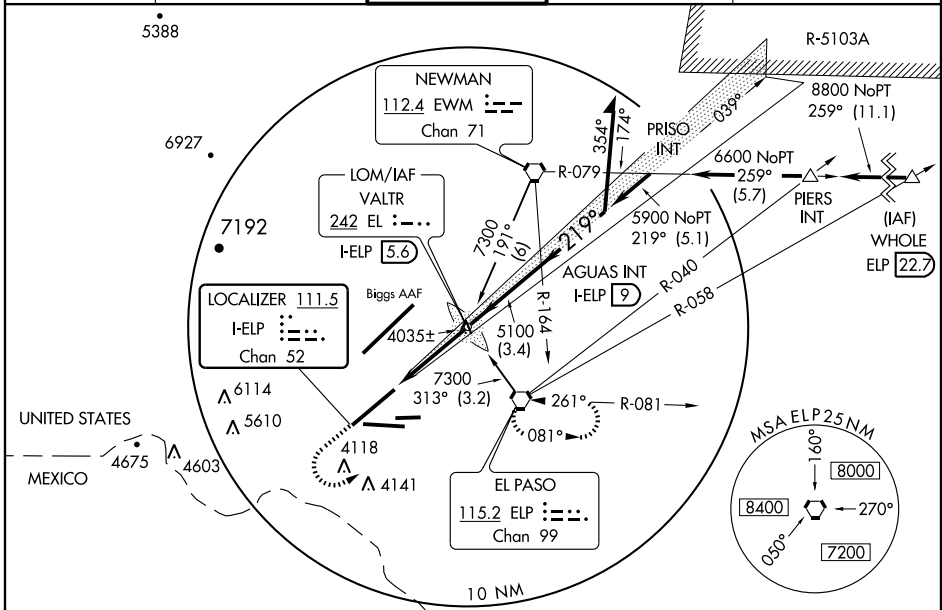
LOC I-ELP 111.5 Chan 52	APP CRS 219°	Rwy Idg 12020 TDZE 3949 Apt Elev 3959
---	------------------------	--

⚠ Cat E circling not authorized west of airport. Procedure turn not authorized for Cat E aircraft. For inoperative MALS/R increase S-ILS 22 Cat E visibility to RVR 4000 and S-LOC 22 Cat E visibility to RVR 6000. ** Visibility Cat A/B/C/D RVR 1800 authorized with the use of FD or AP or HUD to DA.

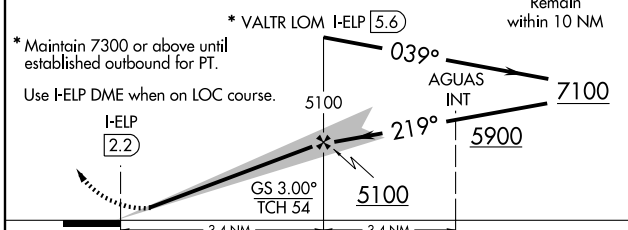
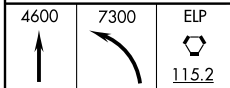
MALS/R

MISSED APPROACH: Climb to 4600, then climbing left turn to 7300 direct ELP VORTAC and hold. (TACAN equipped aircraft continue climbing to 9000 via ELP R-058 to WHOLE Int/ ELP 22.7 DME)

ATIS 120.0 254.3	EL PASO APP CON 124.25 298.85	EL PASO TOWER 118.3 239.275	GND CON 121.9 348.6	CLNC DEL 125.0 379.1
----------------------------	---	---------------------------------------	-------------------------------	--------------------------------

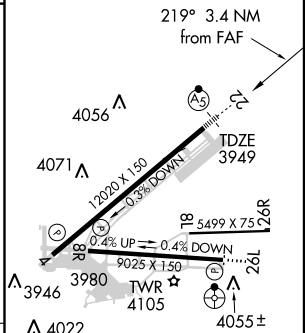


RADAR REQUIRED
When R-5103 in use.



* Maintain 7300 or above until established outbound for PT.
Use I-ELP DME when on LOC course.

ELEV 3959	D
-----------	----------



CATEGORY	A	B	C	D	E
S-ILS R22		** 4149/24	200 (200-½)		
S-LOC R22	4300/24	351 (400-½)	4300/40	351 (400-¾)	
CIRCLING*	4420-1	462 (500-1)	4420-1½ 462 (500-1½)	4520-2 562 (600-2)	4660-2 ½ 702 (800-2½)

MIRL Rwy 8L-26R
REIL Rwy 4 and 8R
HIRL Rwy 4-22 and 8R-26L

SC-3, 11 MAR 2010 to 08 APR 2010

SC-3, 11 MAR 2010 to 08 APR 2010