

VOR RWY 26L

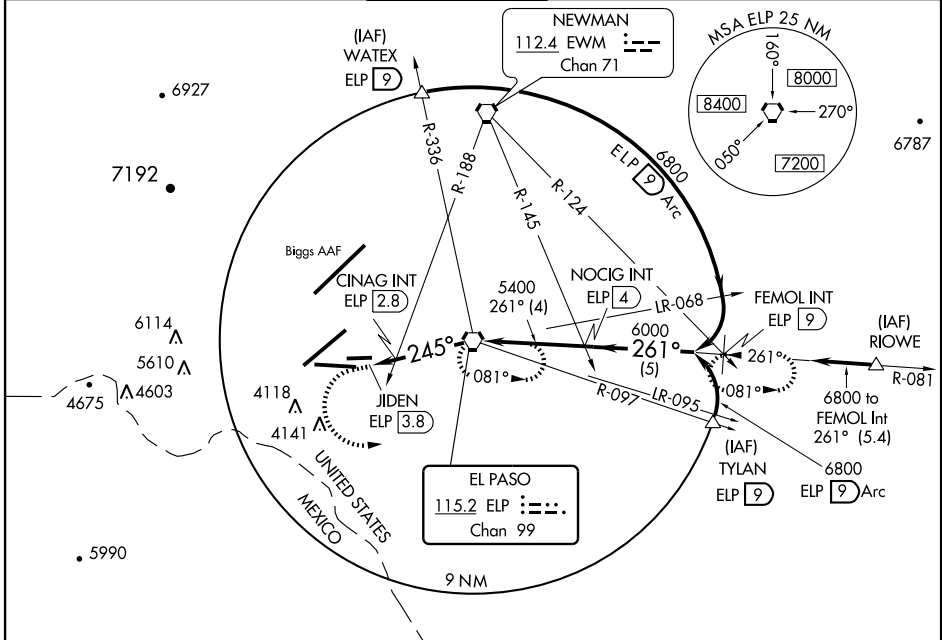
EL PASO INTL (ELP)

VORTAC ELP 115.2 Chan 99	APP CRS 245°	Rwy Idg TDZE Apt Elev 9025 3959 3959
--	------------------------	--

⚠ Cat E circling west of airport not authorized.
ASR Inoperative table does not apply to Cat C.

ODALS MISSED APPROACH: Climb to 4500 then climbing left turn to 6900 direct ELP VORTAC and hold. (TACAN aircraft climb to 4500 then climbing left turn to 6900 via heading 050° and ELP R-081 to FEMOL 9 DME and hold. Hold east, left turn, 261° inbound.)

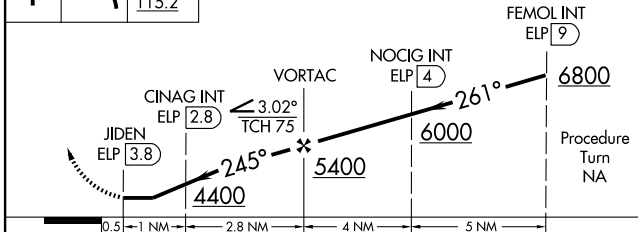
ATIS 120.0 254.3	EL PASO APP CON 124.25 298.85	EL PASO TOWER 118.3 239.275	GND CON 121.9 348.6	CLNC DEL 125.0 379.1
----------------------------	---	---------------------------------------	-------------------------------	--------------------------------



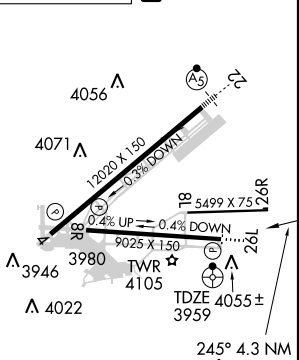
SC-3, 11 MAR 2010 to 08 APR 2010

SC-3, 11 MAR 2010 to 08 APR 2010

4500	6900	ELP
		115.2



ELEV 3959 **D**



CATEGORY	A	B	C	D	E
S-26L	4400- ³ / ₄	442 (500- ³ / ₄)	4400-1 ¹ / ₄ 442 (500-1 ¹ / ₄)	4400-1 ¹ / ₂	442 (500-1 ¹ / ₂)
CIRCLING	4420-1	462 (500-1)	4420-1 ¹ / ₂ 462 (500-1 ¹ / ₂)	4520-2 562 (600-2)	4660-2 ¹ / ₂ 702 (800-2 ¹ / ₂)
CINAG MINIMUMS					
S-26L	4320- ³ / ₄	362 (400- ³ / ₄)	4320-1 ¹ / ₄	362 (400-1 ¹ / ₄)	
CIRCLING	4420-1	462 (500-1)	4420-1 ¹ / ₂ 462 (500-1 ¹ / ₂)	4520-2 562 (600-2)	4660-2 ¹ / ₂ 702 (800-2 ¹ / ₂)

MIRL Rwy 8L-26R
 REIL Rws 4 and 8R
 HIRL Rws 4-22 and 8R-26L

FAF to MAP 3.8 NM

Knots	60	90	120	150	180
Min:Sec	3:48	2:32	1:54	1:31	1:16