

ILS or LOC/DME RWY 16L

EUGENE/MAHLON SWEET FIELD (EUG)

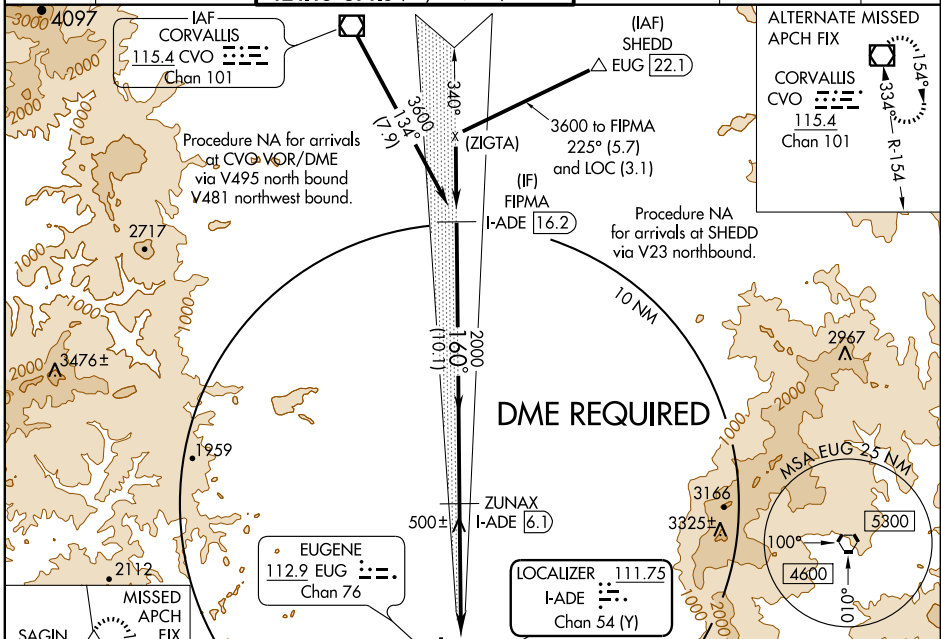
LOC/DME I-ADE 111.75 Chan 54 (Y)	APP CRS 160°	Rwy Idg 6000 TDZE 369 Apt Elev 374
---	------------------------	---

⚠ If local altimeter setting not received, use Corvallis altimeter setting and increase all DAs 70 feet, and all MDAs 80 feet. VDP NA when using Corvallis altimeter setting.



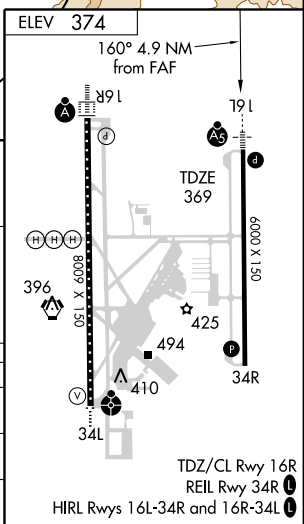
MISSED APPROACH: Climb to 5200 via heading 160° and EUG VORTAC R-152 to SAGIN/EUG 16 DME and hold, continue climb-in-hold to 5200.

ATIS 125.225	CASCADE APP CON 119.6 348.7	EUGENE TOWER ★ 118.9 (CTAF) 371.9 (Rwy 16R/34L) 124.15 371.9 (Rwy 16L/34R)	GND CON 121.7 269.5	CLNC DEL 121.7 269.5	UNICOM 122.95
------------------------	---------------------------------------	---	-------------------------------	--------------------------------	-------------------------



Procedure Turn NA	FIPMA I-ADE 16.2	VGSI and ILS glidepath not coincident. Use I-ADE DME when on the localizer course.	ZUNAX I-ADE 6.1	5200	EUG R-152 112.9	SAGIN Δ
				160°		
				I-ADE 2.4		
				I-ADE 1.2		

CATEGORY	A	B	C	D
S-ILS 16L	569-1/2		200 (200-1/2)	
S-LOC 16L	800-1/2	431 (500-1/2)	800-3/4	431 (500-3/4)
CIRCLING	800-1	840-1	840-1 1/2	940-2
	426 (500-1)	466 (500-1)	466 (500-1 1/2)	566 (600-2)



NW-1, 19 NOV 2009 to 17 DEC 2009

NW-1, 19 NOV 2009 to 17 DEC 2009