

HELENA, MONTANA

COPTER VOR 251°

VORTAC HLN 117.7 Chan 124	APCH CRS 251°	Rwy Idg TDZE Arpt Elev N/A 3848 3874
---	-------------------------	--

AL-192 [USA]

HELENA REGIONAL (KHLN)

NA when tower clsd.

MISSED APPROACH: Climbing right turn to 8000 direct HLN VORTAC and hold.

ATIS ★
120.4

HELENA APP CON
119.5 229.4

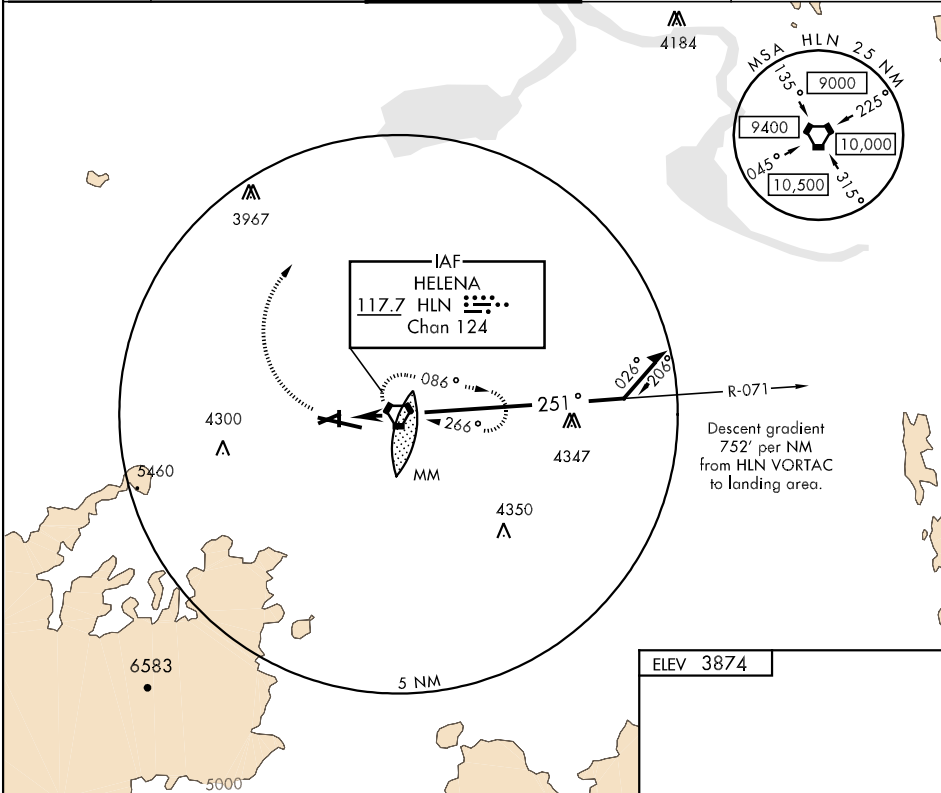
HELENA TOWER ★
118.3 (CTAF) 257.8

GND CON
121.9

UNICOM
122.95

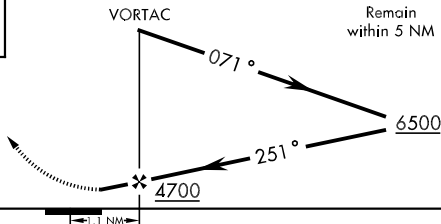
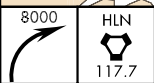
NW-1, 19 NOV 2009 to 17 DEC 2009

NW-1, 19 NOV 2009 to 17 DEC 2009



COPTER ONLY

Final approach from holding pattern at HLN VORTAC not authorized. Procedure turn required.



ELEV 3874

REIL Rwy 9
MIRL Rwy 5-23 and 16-34
HIRL Rwy 9-27

FAF to MAP 1.1 NM					
Knots	45	60	75	90	105
Min:Sec	1:28	1:06	0:53	0:44	0:37

HELENA, MONTANA
Amdt 1 06159

46°36'N-111°59'W

HELENA REGIONAL (KHLN)

COPTER VOR 251°