

(SIEBE2.SIEBE) 08269

SIEBE TWO DEPARTURE

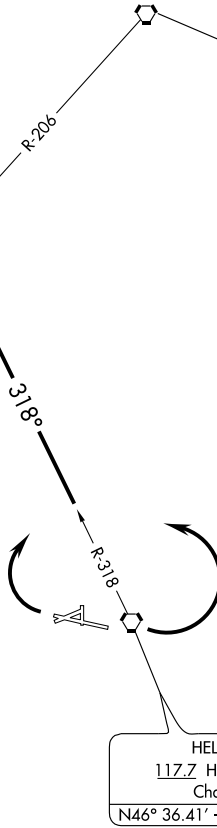
SL-192 (FAA)

HELENA RGNL (HLN)
HELENA, MONTANA

ATIS 120.4
GND CON
121.9
HELENA TOWER*
118.3 (CTAF) 257.8
HELENA DEP CON*
119.5 229.4

SIEBE
N46° 53.09'
W112° 09.08'
L-13

GREAT FALLS
115.1 GTF
Chan 98



NOTE: Rwy 9, 1500-2 or standard
with minimum climb of
360 feet per NM to 6500 feet.

NOTE: Rwy 27, 2400-2 or standard
with minimum climb of
355 feet per NM to 7100 feet.

NOTE: Chart not to scale.

DEPARTURE ROUTE DESCRIPTION

TAKE-OFF RUNWAY 9: Climbing left turn, thence. . . .

TAKE-OFF RUNWAY 27: Climbing right turn, thence. . . .

. . . .Intercept HLN R-318 to SIEBE INT.

NW-1, 11 MAR 2010 to 08 APR 2010

NW-1, 11 MAR 2010 to 08 APR 2010

SIEBE TWO DEPARTURE

(SIEBE2.SIEBE) 08269

HELENA, MONTANA
HELENA RGNL (HLN)