

VORTAC CRG <b>114.5</b> Chan <b>92</b>	APP CRS <b>330°</b>	Rwy Idg TDZE <b>41</b> Apt Elev <b>41</b>	<b>4008</b>
--	------------------------	---	-------------

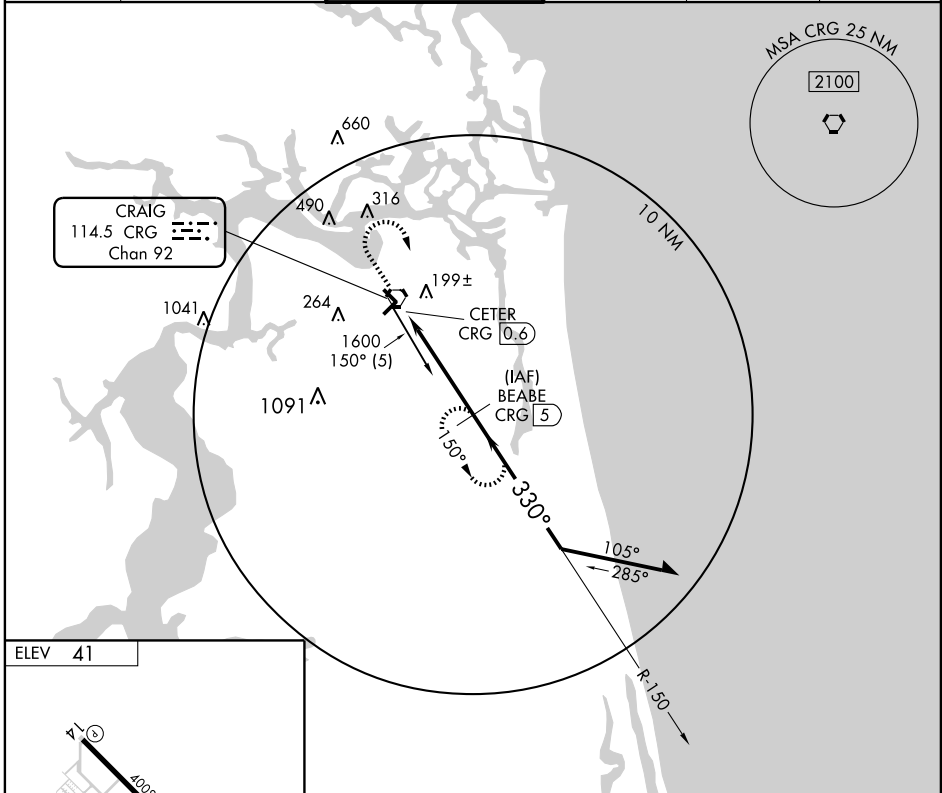
# VOR/DME RWY 32

JACKSONVILLE/CRAIG MUNI (CRG)

**▲** When local altimeter setting not received, use Jacksonville Intl altimeter setting and increase all MDA 40 feet.  
**▲** For inoperative MALSR, increase S-32 Cat. D visibility to 1 1/4 miles.  
**ASR** VDP NA when using Jacksonville Intl altimeter setting.

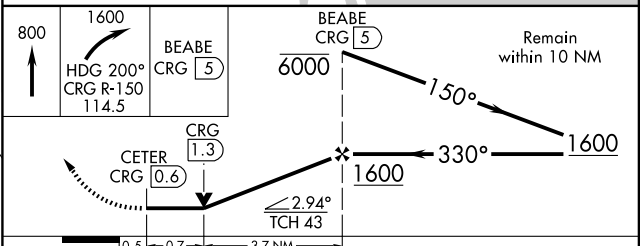
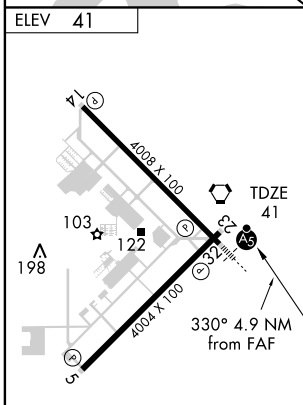
**MALSR** MISSED APPROACH: Climb to 800 then climbing right turn to 1600 via heading 200° and CRG VORTAC R-150 to BEABE/CRG 5 DME and hold.

ATIS <b>125.4</b>	JACKSONVILLE APP CON <b>124.9 308.4</b>	CRAIG TOWER ★ <b>132.1(CTAF) 0 257.625</b>	GND CON <b>121.8</b>	CLNC DEL <b>118.35</b>	UNICOM <b>122.95</b>
----------------------	--	---	-------------------------	---------------------------	-------------------------



SE-3, 11 MAR 2010 to 08 APR 2010

SE-3, 11 MAR 2010 to 08 APR 2010



CATEGORY	A	B	C	D
S-32	460-1/2 419 (500-1/2)	419 (500-1/2)	460-3/4 419 (500-3/4)	460-1 419 (500-1)
CIRCLING	500-1 459 (500-1)	580-1 539 (600-1)	580-1 539 (600-1 1/2)	600-2 559 (600-2)

- MIRL Rwy 5-23 **①**
- HIRL Rwy 14-32 **①**
- REIL Rwy 23 **①**
- REIL Rwy 14 **①**