

VOR RWY 19

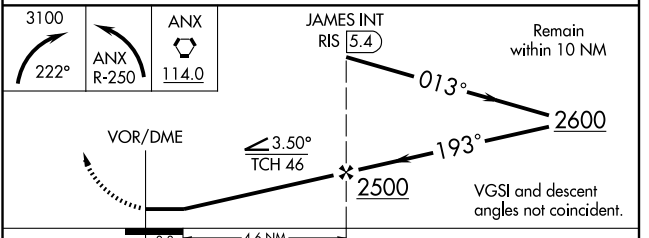
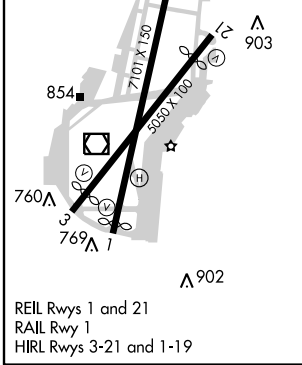
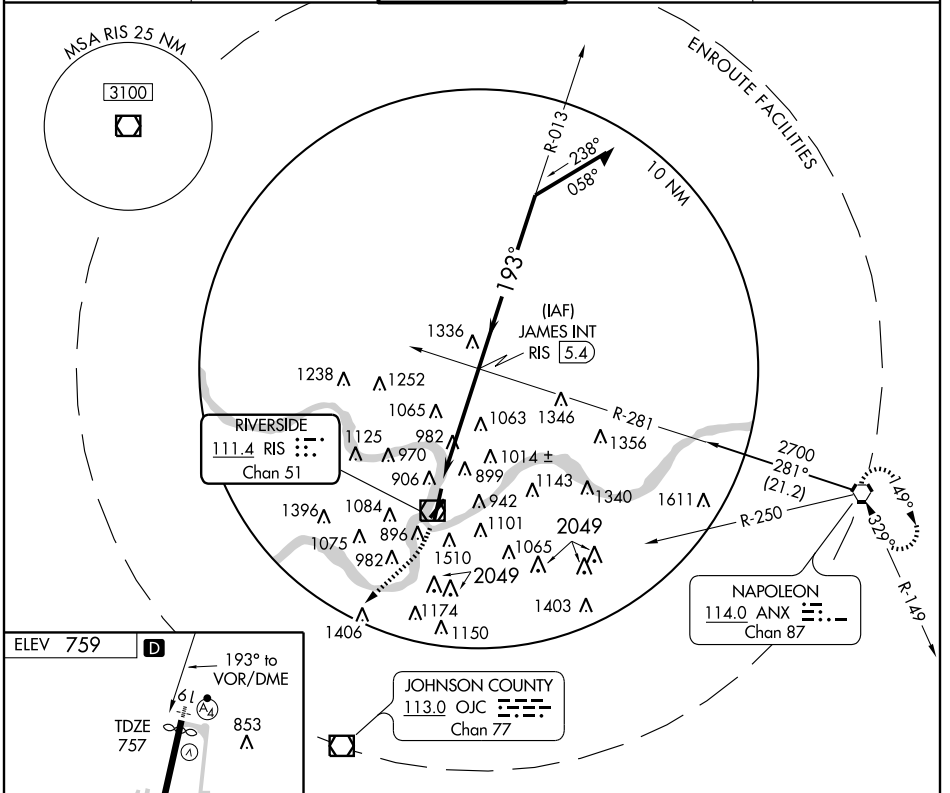
VOR/DME RIS 111.4 Chan 51	APP CRS 193°	Rwy Idg TDZE 757 Apt Elev 759	6901
--	------------------------	---	-------------

KANSAS CITY/CHARLES B. WHEELER DOWNTOWN (MKC)

▼ Circling NA east of Rwy 1 and 19. Circling Cat C/D NA Rwy 3.
▲ If local altimeter setting not received, use Kansas City Intl altimeter settings and increase all MDAs 80 feet.
Inoperative table does not apply.

MALSF
MISSED APPROACH: Climbing right turn to 3100 on heading 222°, then left turn via ANX R-250 to ANX VORTAC and hold.

ATIS 120.75	KANSAS CITY APP CON 118.4 294.7	DOWNTOWN TOWER 133.3 257.8	GND CON 121.9	CLNC DEL 121.9
-----------------------	---	--------------------------------------	-------------------------	--------------------------



CATEGORY	A	B	C	D
S-19	1400/50	643 (700-1)	1400-1 ³⁴ 643 (700-1 ³⁴)	1400-2 643 (700-2)
CIRCLING	1400-1	641 (700-1)	1400-1 ³⁴ 641 (700-1 ³⁴)	1400-2 641 (700-2)

NC-3, 11 MAR 2010 to 08 APR 2010

NC-3, 11 MAR 2010 to 08 APR 2010