

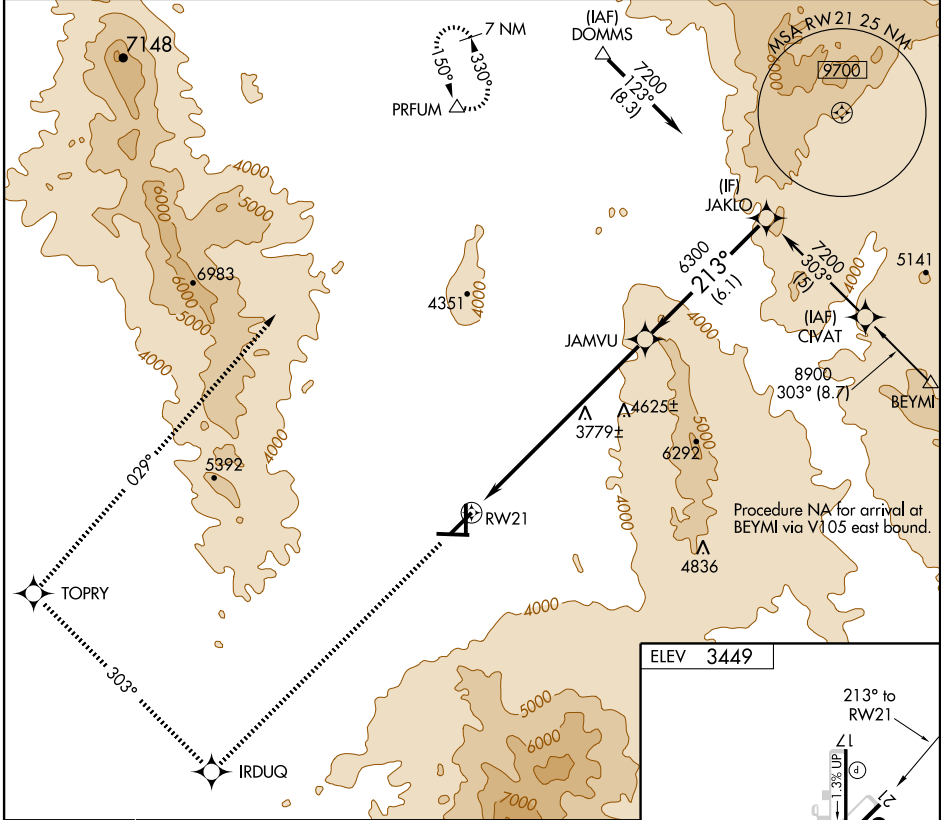
# RNAV (GPS) Z RWY 21

KINGMAN (IGM)

WAAS CH <b>70612</b> <b>W21A</b>	APP CRS <b>213°</b>	Rwy Idg TDZE Apt Elev	<b>6827</b> <b>3403</b> <b>3449</b>
--	------------------------	-----------------------------	---

<p><b>▽</b> DME/DME RNP-0.3 NA.</p> <p><b>△</b> NA Visibility reduction by helicopters NA.</p>	<p>MISSED APPROACH: Climb to 9000 direct IRDUQ and via track 303° to TOPRY and via track 029° to PRFUM and hold.</p>
--	--

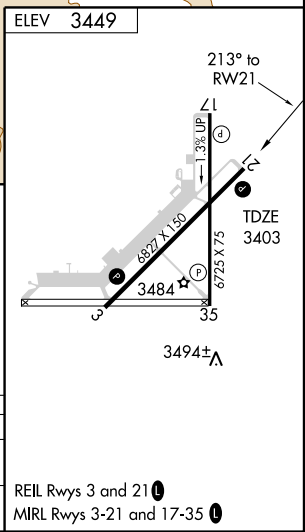
<p>ASOS <b>119.275</b></p>	<p>PRESCOTT RADIO <b>122.1R</b></p>	<p>UNICOM <b>122.8</b> (CTAF) <b>0</b></p>
--------------------------------	---	--



SW-4, 19 NOV 2009 to 17 DEC 2009

SW-4, 19 NOV 2009 to 17 DEC 2009

9000	IRDUQ	303°	TOPRY	029°	PRFUM	JAKLO	Procedure Turn NA
↑	✧	TRACK	✧	TRACK	△	7200	
RW21		JAMVU		213°		6300	
8.8 NM		6.1 NM				GS 3.00° TCH 45	
CATEGORY	A	B	C	D			
LPV DA	3653-1			250 (300-1)			
CIRCLING	3980-1 531 (600-1)	4020-1 571 (600-1)	4020-1½ 571 (600-1½)	4140-2¼ 691 (700-2¼)			



REIL Rwy 3 and 21 **0**  
MIRL Rwy 3-21 and 17-35 **0**