

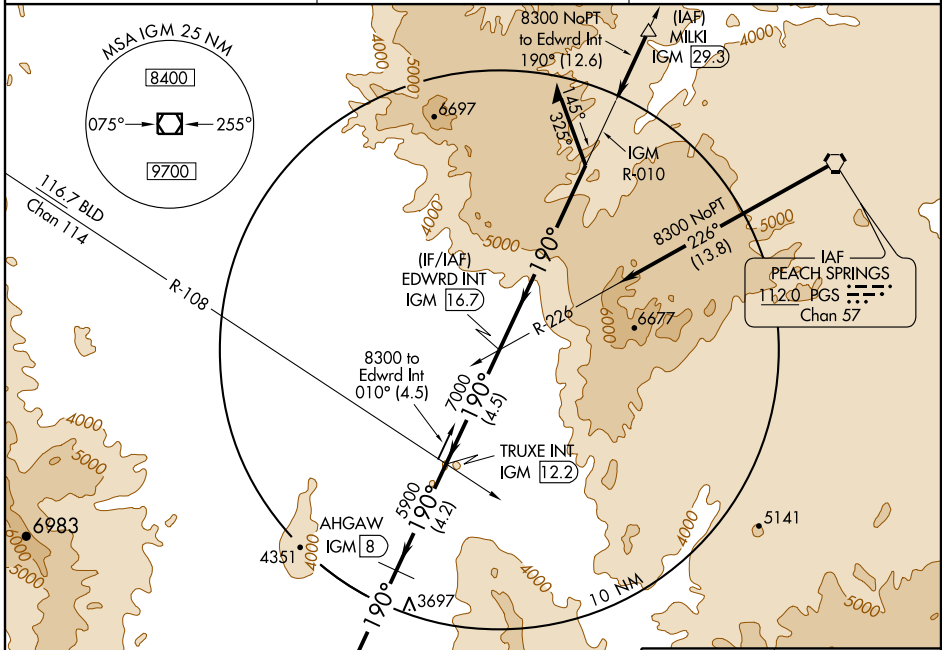
# VOR/DME RWY 21 KINGMAN (IGM)

VOR/DME IGM <b>108.8</b> Chan 25	APP CRS <b>190°</b>	Rwy Idg TDZE <b>6827</b> <b>3403</b> Apt Elev <b>3449</b>
--	------------------------	--

**Visibility reduction by helicopters NA.**

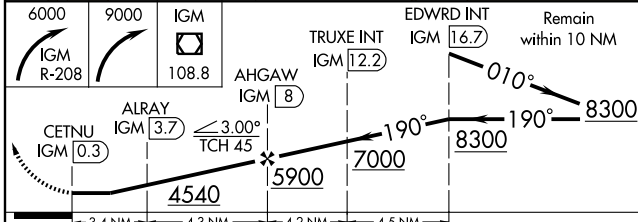
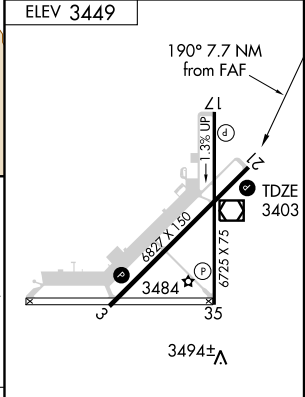
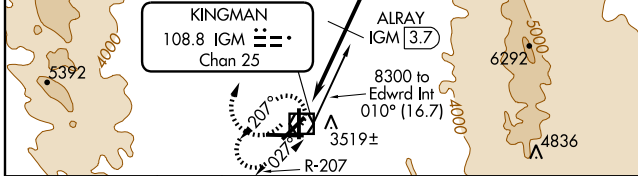
**MISSED APPROACH:** Climbing right turn to 6000 via IGM VOR/DME R-208 then climbing right turn to 9000 direct IGM VOR/DME and hold.

ASOS <b>119.275</b>	PRESCOTT RADIO <b>122.1R</b>	UNICOM <b>122.8 (CTAF)</b>
------------------------	---------------------------------	-------------------------------



SW-4, 11 MAR 2010 to 08 APR 2010

SW-4, 11 MAR 2010 to 08 APR 2010



CATEGORY	A	B	C	D
S-21	3880-1	477 (500-1)	3880-1½ 477 (500-1½)	3880-1½ 477 (500-1½)
CIRCLING	3980-1 531 (600-1)	4020-1 571 (600-1)	4020-1½ 571 (600-1½)	4140-2¼ 691 (700-2¼)

MIRL Rwy 3-21 and 17-35 **1**

REIL Rwy 3 and 21 **1**