

KNOXVILLE, TENNESSEE

# HI-VOR/DME or TACAN RWY 23R

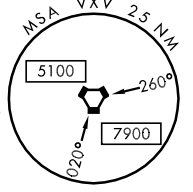
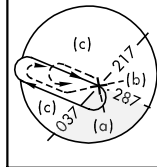
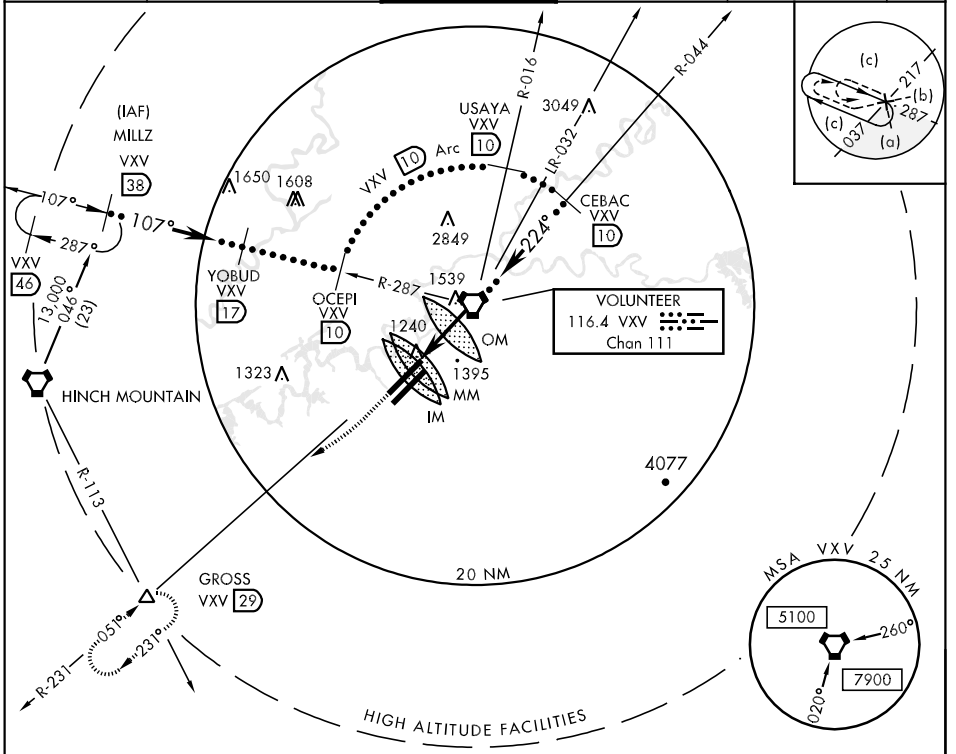
VORTAC VXV 116.4 Chan 111	APCH CRS 224°	Rwy Idg TDZE 9008 981 Arpt Elev 981	JAL-218 [USAF]	KNOXVILLE/ McGHEE TYSON (KTYS)
---------------------------------	------------------	--	----------------	--------------------------------

\*When ALS inop, increase CAT C vis to 1½ miles, CAT D vis to 1¾ miles, CAT E vis to 2 miles.

ALSF-2

MISSED APPROACH: Climb to 3000 on VXV VORTAC R-231 to GROSS Int/29 DME and hold.

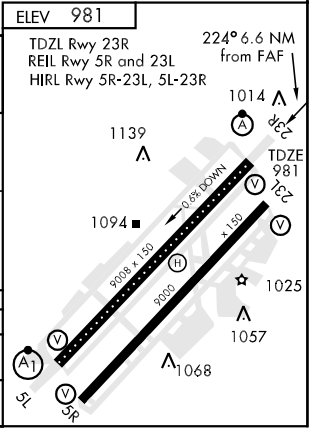
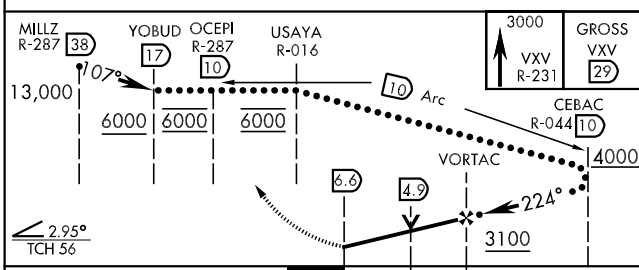
ATIS ★ 128.35	KNOXVILLE APP CON 118.0 360.8	KNOXVILLE TOWER 121.2 257.8	GND CON 121.9 348.6	CLNC DEL 121.65	ASR
------------------	----------------------------------	--------------------------------	------------------------	--------------------	-----



SE-1, 11 MAR 2010 to 08 APR 2010

SE-1, 11 MAR 2010 to 08 APR 2010

EMERG SAFE ALT 100 NM 8800



CATEGORY	C	D	E
S-23R*	1580/50 599 (600-1)	1580/60 599 (600-1¼)	1580-1½ 599 (600-1½)
CIRCLING	1580-1½ 599 (600-1½)	1620-2 639 (700-2)	1900-3 919 (1000-3)

KNOXVILLE, TENNESSEE 35°49'N-84°00'W KNOXVILLE/ McGHEE TYSON (KTYS)

Amtd 3 10042

# HI-VOR/DME or TACAN RWY 23R