

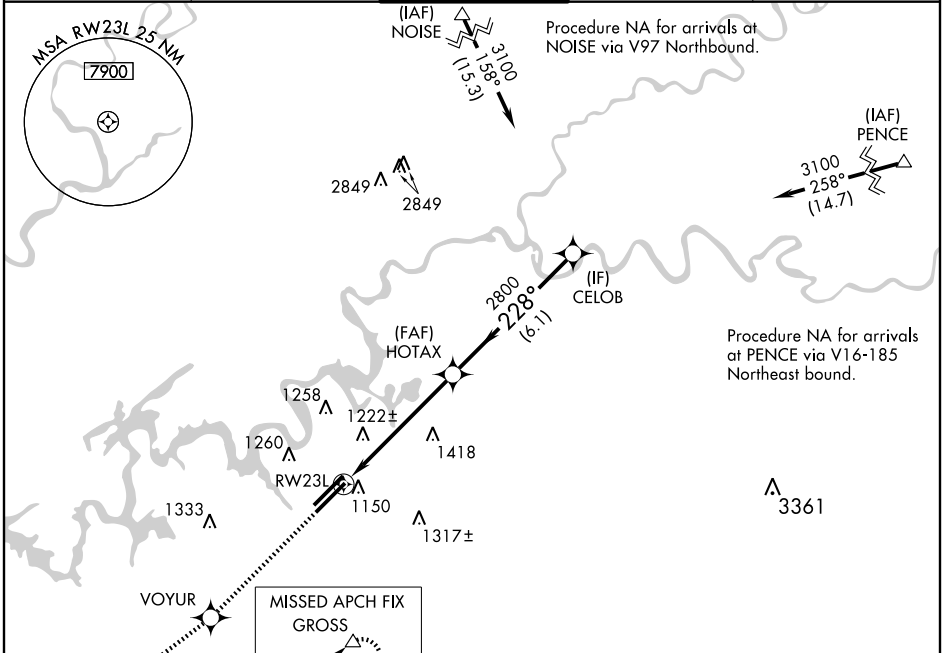
RNAV (GPS) RWY 23L

KNOXVILLE/MCGHEE-TYSON (TYS)

WAAS CH 90210 W23B	APP CRS 228°	Rwy Idg TDZE Apt Elev	8600 965 981
--	------------------------	-----------------------------	---

ASR	For uncompensated Baro-VNAV systems, LNAV/VNAV NA below -16° C (4° F) or above 47° C (116° F). Visibility reduction by helicopters NA. DME/DME RNP-0.3 NA.	MISSED APPROACH: Climb to 3000 direct VOYUR and via 236° track to GROSS and hold.
------------	---	--

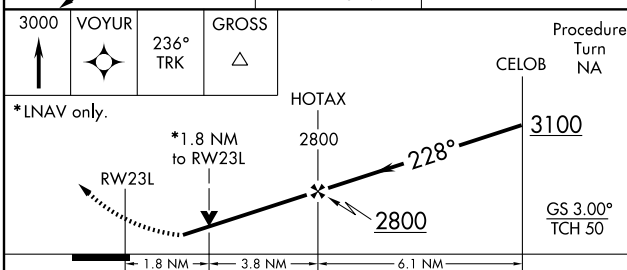
ATIS 128.35	KNOXVILLE APP CON 123.9 360.8	KNOXVILLE TOWER 121.2 257.8	GND CON 121.9 348.6	CLNC DEL 121.65
-----------------------	---	---------------------------------------	-------------------------------	---------------------------



SE-1, 11 MAR 2010 to 08 APR 2010

SE-1, 11 MAR 2010 to 08 APR 2010

3000	VOYUR	236° TRK	GROSS
↑	✧	↔	△



CATEGORY	A	B	C	D
LPV DA	1215/40		250 (300-¾)	
LNAV/VNAV DA	1544-2		579 (600-2)	
LNAV MDA	1580/50	615 (600-1)	1580-¾ 615 (600-¾)	1580-2 615 (600-2)
CIRCLING	1580-1	599 (600-1)	1580-¾ 599 (600-¾)	1620-2 639 (700-2)

