

KNOXVILLE, TENNESSEE

AL-218 (FAA)

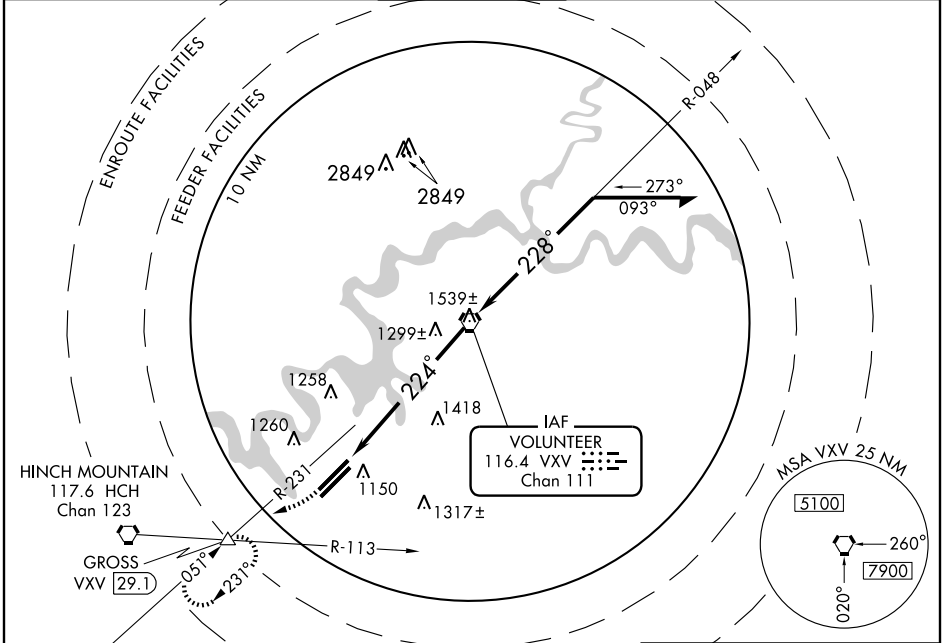
VOR/DME VVX 116.4 Chan 111	APP CRS 224°	Rwy Idg 9005 TDZE 981 Apt Elev 981
--	------------------------	---

VOR RWY 23R

KNOXVILLE/MCGHEE-TYSON (TYS)

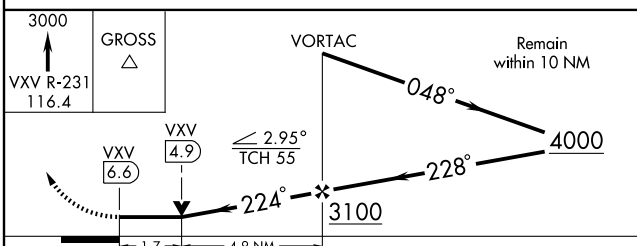
ASR	ALSF-2	MISSED APPROACH: Climb to 3000 via VVX R-231 to GROSS Int/29.1 DME and hold.
-----	--------	--

ATIS 128.35	KNOXVILLE APP CON 123.9 360.8	KNOXVILLE TOWER 121.2 257.8	GND CON 121.9 348.6	CLNC DEL 121.65
-----------------------	---	---------------------------------------	-------------------------------	---------------------------

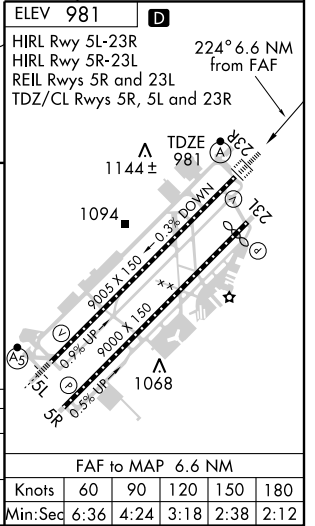


SE-1, 11 MAR 2010 to 08 APR 2010

SE-1, 11 MAR 2010 to 08 APR 2010



CATEGORY	A	B	C	D
S-23R	1580/24 599 (600-½)	1580/50 599 (600-1)	1580/60 599 (600-1 ¼)	1580/60 599 (600-1 ¼)
CIRCLING	1580-1 599 (600-1)	1580-1 ½ 599 (600-1 ½)	1620-2 639 (700-2)	



KNOXVILLE, TENNESSEE
Amdt 7 09183

35°49'N - 84°00'W

KNOXVILLE/MCGHEE-TYSON (TYS)
VOR RWY 23R

FAF to MAP 6.6 NM					
Knots	60	90	120	150	180
Min:Sec	6:36	4:24	3:18	2:38	2:12