

LA JUNTA, COLORADO

AL-221 (FAA)

WAAS CH <b>93813</b> <b>W26A</b>	APP CRS <b>261°</b>	Rwy Idg <b>6849</b> TDZE <b>4188</b> Apt Elev <b>4229</b>
--	------------------------	---

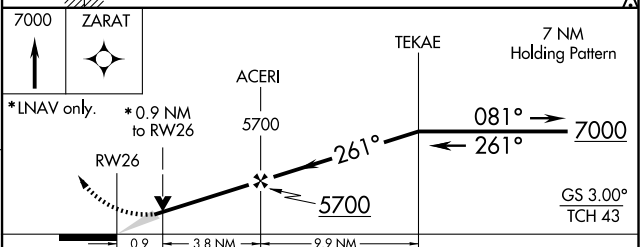
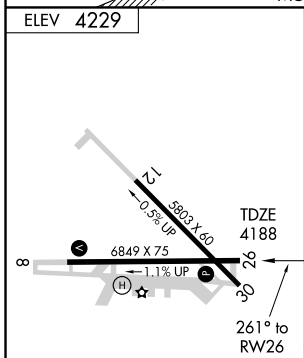
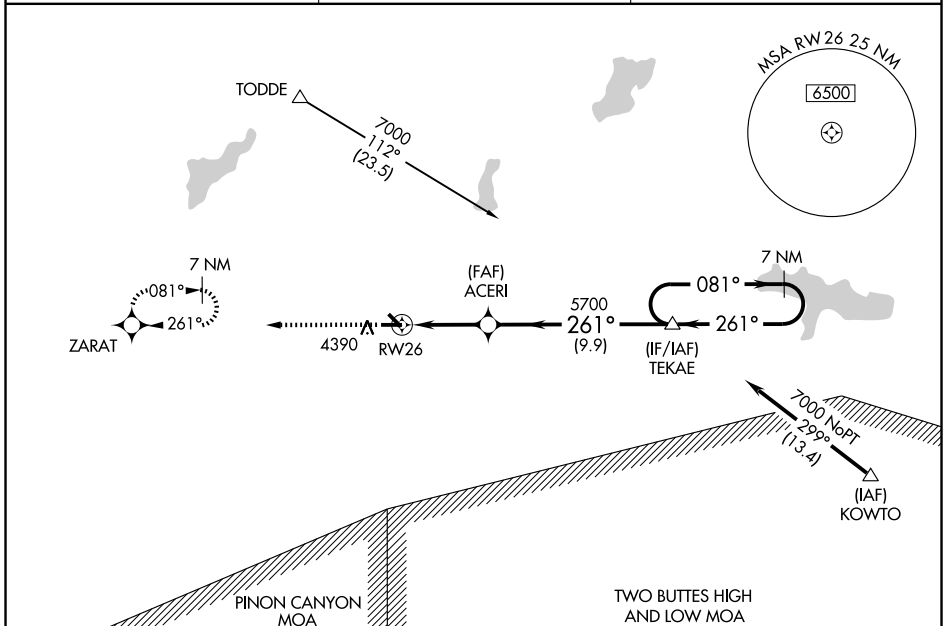
# RNAV (GPS) RWY 26

LA JUNTA MUNI (LHX)

**⚠** For uncompensated Baro-VNAV systems, LNAV/VNAV NA below -23°C (-9°F) or above 40°C (104°F). DME/DME RNP-0.3 NA. Baro-VNAV and VDP NA when using Lamar altimeter setting. When local altimeter setting not received, use Lamar altimeter setting and increase all DA/MDA 180 feet and increase all visibility ¾ mile.

MISSED APPROACH: Climb to 7000 direct ZARAT and hold.

ASOS <b>135.525</b>	DENVER CENTER <b>128.375 379.95</b>	UNICOM <b>123.0 (CTAF) 0</b>
------------------------	--	---------------------------------



CATEGORY	A	B	C	D
LPV DA		4438-1	250 (300-1)	
LNAV/VNAV DA		4438-1	250 (300-1)	
LNAV MDA		4480-1	292 (300-1)	
CIRCLING	4740-1	511 (600-1)	4740-1½ 511 (600-1½)	4780-2 551 (600-2)

LA JUNTA, COLORADO  
Amdt 1 09239

38°03'N - 103°31'W

# RNAV (GPS) RWY 26

SW-1, 19 NOV 2009 to 17 DEC 2009

SW-1, 19 NOV 2009 to 17 DEC 2009