

# VOR RWY 2

LAS VEGAS MUNI (LVS)

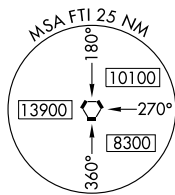
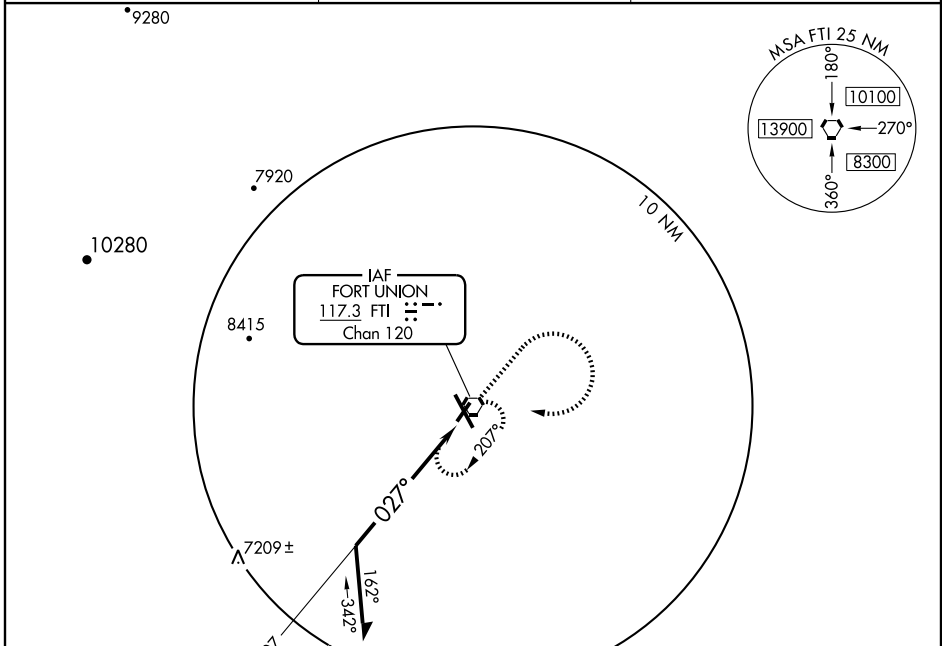
VORTAC FTI <b>117.3</b> Chan <b>120</b>	APP CRS <b>027°</b>	Rwy Idg TDZE <b>6870</b> Apt Elev <b>6877</b>
-----------------------------------------------	------------------------	-----------------------------------------------------

**⚠** Inoperative table does not apply.  
**⚠** If local altimeter setting not received, use Santa Fe Muni altimeter setting and increase all MDAs 200 feet.

ODALS

MISSED APPROACH: Climb to 8000 then climbing right turn to 9000 direct FTI VORTAC and hold.

ASOS <b>118.525</b>	ALBUQUERQUE CENTER <b>132.8 346.35</b>	UNICOM <b>122.8 (CTAF)</b>
------------------------	-------------------------------------------	-------------------------------



SW-1, 19 NOV 2009 to 17 DEC 2009

SW-1, 19 NOV 2009 to 17 DEC 2009

Remain within 10 NM 	8000 	9000 	FTI  117.3	
	VDP NA when using Santa Fe Muni altimeter setting.			
CATEGORY	A	B	C	D
S-2	7520-1	650 (700-1)	7520-1¼ 650 (700-1¼)	NA
CIRCLING	7520-1	643 (700-1)	7520-1¼ 643 (700-1¼)	NA