

# RNAV (GPS) RWY 2

LAS VEGAS MUNI (LVS)

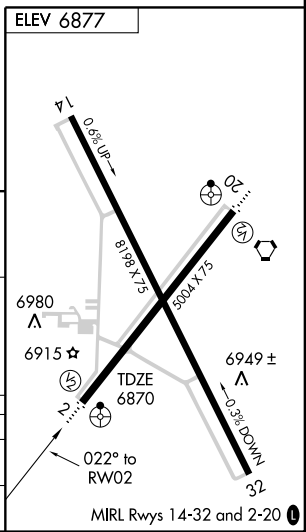
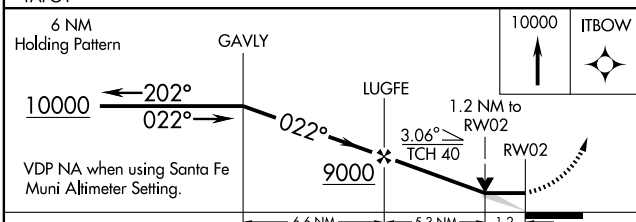
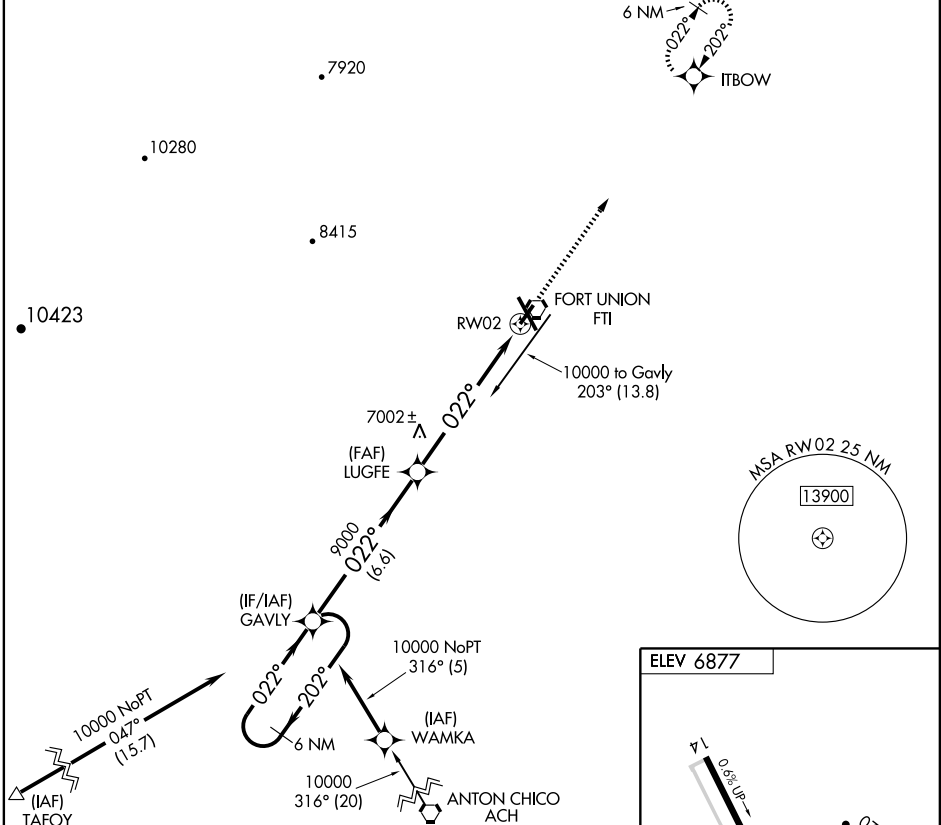
APP CRS <b>022°</b>	Rwy Idg <b>5004</b>
	TDZE <b>6870</b>
	Apt Elev <b>6877</b>

**⚠** DME/DME RNP-0.3 NA.  
 Inoperative table does not apply to Cat C.  
 If local altimeter setting not received, use Santa Fe Muni altimeter setting and increase all MDAs 200 feet.

ODALS

MISSED APPROACH: Climb to 10000 direct ITBOW and hold.

ASOS <b>118.525</b>	ALBUQUERQUE CENTER <b>132.8 346.35</b>	UNICOM <b>122.8 (CTAF) 0</b>
------------------------	---	---------------------------------



CATEGORY	A	B	C	D
LNVA MDA	7280- <sup>3</sup> / <sub>4</sub> 410 (500- <sup>3</sup> / <sub>4</sub> )		7280-1 <sup>1</sup> / <sub>4</sub> 410 (500-1 <sup>1</sup> / <sub>4</sub> )	NA
CIRCLING	7400-1 523 (600-1)	7420-1 543 (600-1)	7420-1 <sup>1</sup> / <sub>2</sub> 543 (600-1 <sup>1</sup> / <sub>2</sub> )	NA

SW-1, 11 MAR 2010 to 08 APR 2010

SW-1, 11 MAR 2010 to 08 APR 2010