

# RNAV (GPS) RWY 20

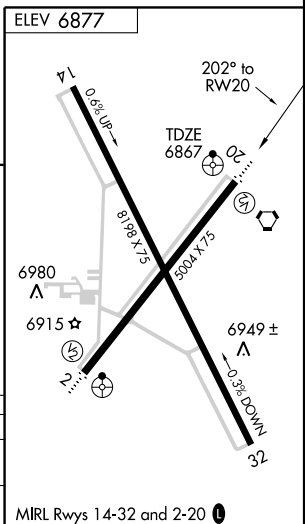
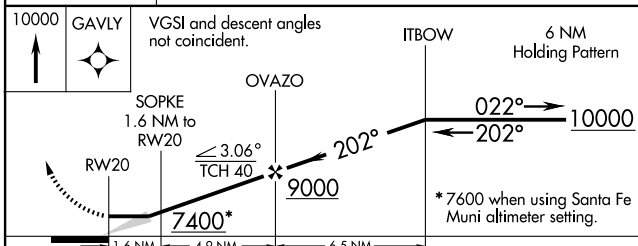
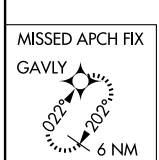
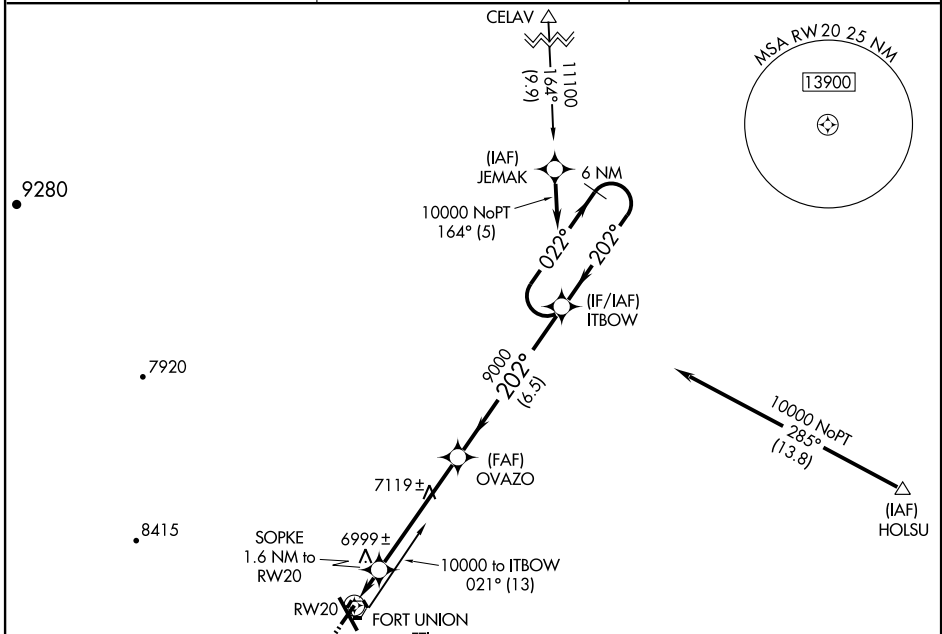
LAS VEGAS MUNI (LVS)

APP CRS <b>202°</b>	Rwy Idg <b>5004</b>
	TDZE <b>6867</b>
	Apt Elev <b>6877</b>

**▼** DME/DME RNP-0.3 NA.  
**▲** If local altimeter setting not received, use Santa Fe Muni altimeter setting and increase all MDAs 200 feet.  
 Straight-in minimums NA when using Santa Fe Muni altimeter setting.

ODALS  
 MISSED APPROACH: Climb to 10000 direct GAVLY and hold.

ASOS <b>118.525</b>	ALBUQUERQUE CENTER <b>132.8 346.35</b>	UNICOM <b>122.8 (CTAF)</b>
------------------------	---	-------------------------------



CATEGORY	A	B	C	D
LNVA MDA	7260- $\frac{3}{4}$ 393 (400- $\frac{3}{4}$ )			NA
CIRCLING	7400-1 523 (600-1)	7420-1 543 (600-1)	7420-1 $\frac{1}{2}$ 543 (600-1 $\frac{1}{2}$ )	NA

SW-1, 19 NOV 2009 to 17 DEC 2009

SW-1, 19 NOV 2009 to 17 DEC 2009