

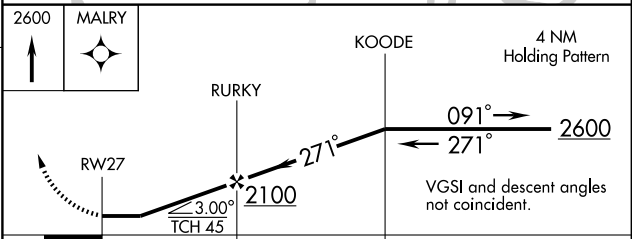
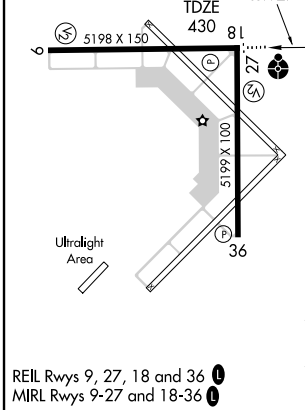
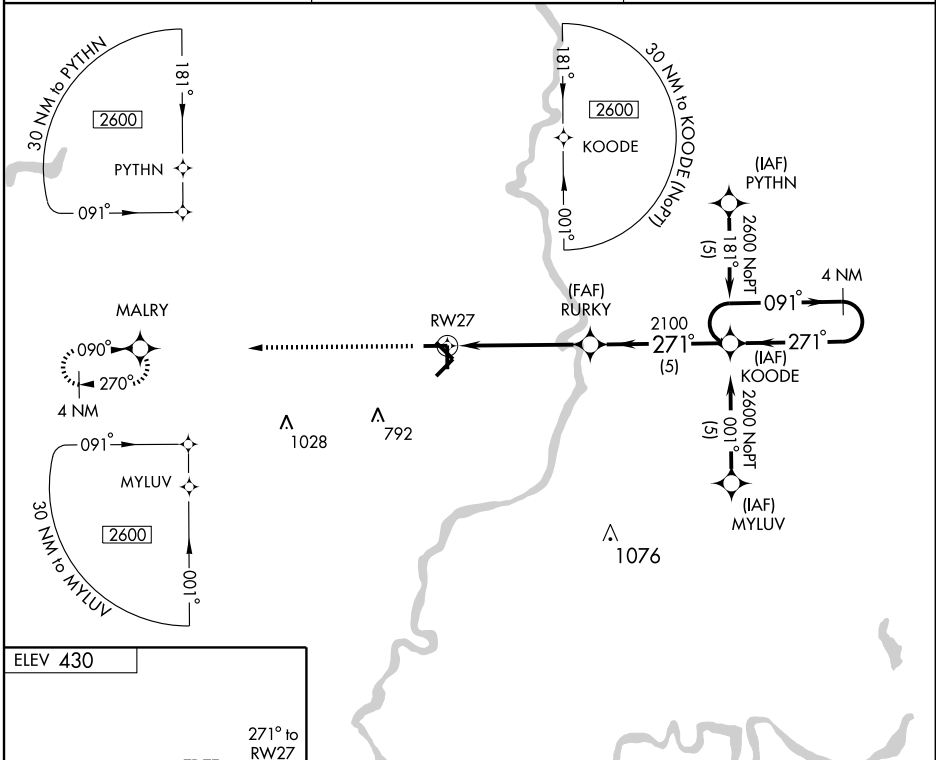
APP CRS	Rwy Idg	<b>5198</b>
<b>271°</b>	TDZE	<b>430</b>
	Apt Elev	<b>430</b>

# RNAV (GPS) RWY 27

LAWRENCEVILLE-VINCENNES INTL (L.V.V)

<b>NA</b>	DME/DME RNP-0.3 NA. Inoperative table does not apply. Visibility reduction by helicopters NA.	ODALS	MISSED APPROACH: Climb to 2600 direct MALRY WP and hold.
-----------	---	-------	---

ASOS <b>118.0</b>	EVANSVILLE APP CON ★ <b>125.6 267.9</b>	UNICOM <b>122.8 (CTAF)</b>
----------------------	--	-------------------------------



CATEGORY	A	B	C	D
LNAV/VNAV	DA	NA		
LNAV MDA	800-1	370 (400-1)	800-1¼ 370 (400-1¼)	
CIRCLING	880-1	450 (500-1)	880-1½ 450 (500-1½)	980-2 550 (600-2)

EC-3, 11 MAR 2010 to 08 APR 2010

EC-3, 11 MAR 2010 to 08 APR 2010