

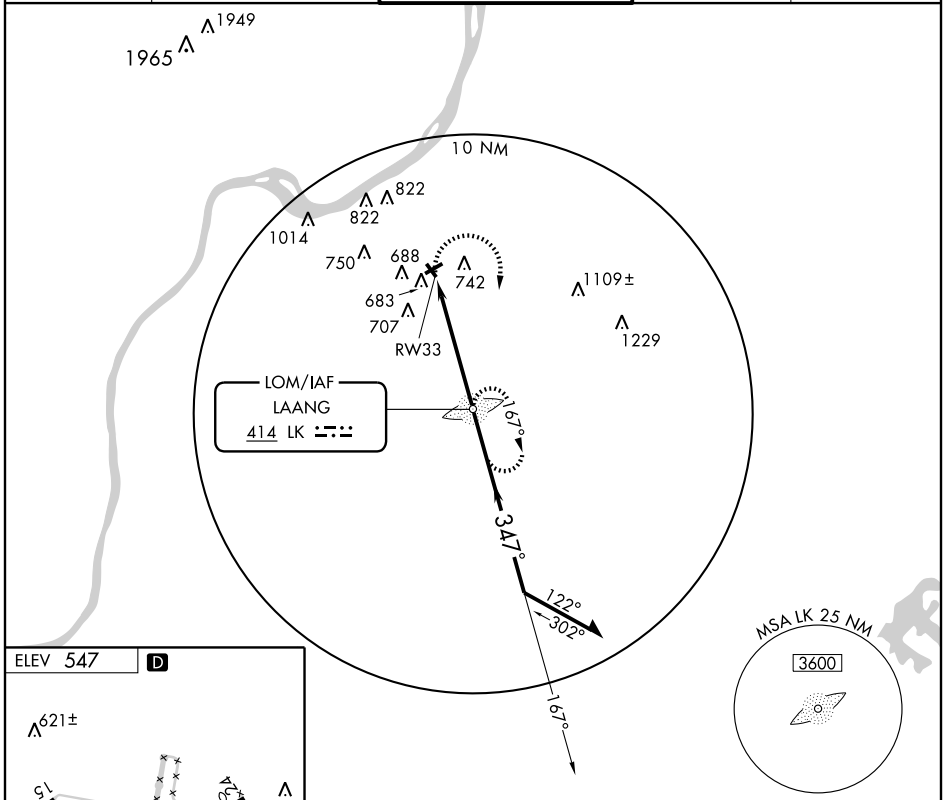
NDB or GPS RWY 33

LOUISVILLE/BOWMAN FIELD (LOU)

LOM LK	APP CRS	Rwy Idg	3125
414	347°	TDZE	546
		Apt Elev	547

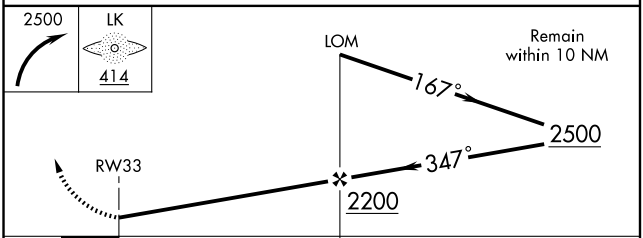
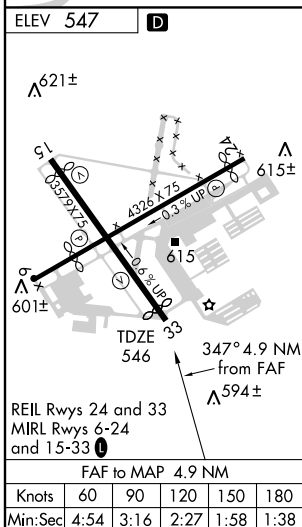
 RADAR REQUIRED		MISSED APPROACH: Climbing right turn to 2500 direct LAANG LOM and hold.		
---	--	--	--	--

ATIS	LOUISVILLE APP CON	BOWMAN TOWER ★	GND CON	CLNC DEL
112.2	132.075 327.0	119.5(CTAF) 125.625	121.8	118.9



SE-1, 19 NOV 2009 to 17 DEC 2009

SE-1, 19 NOV 2009 to 17 DEC 2009



CATEGORY	A	B	C	D
S-33	1060-1	514 (600-1)	NA	
CIRCLING	1060-1	513 (600-1)	NA	