

LOUISVILLE, KENTUCKY

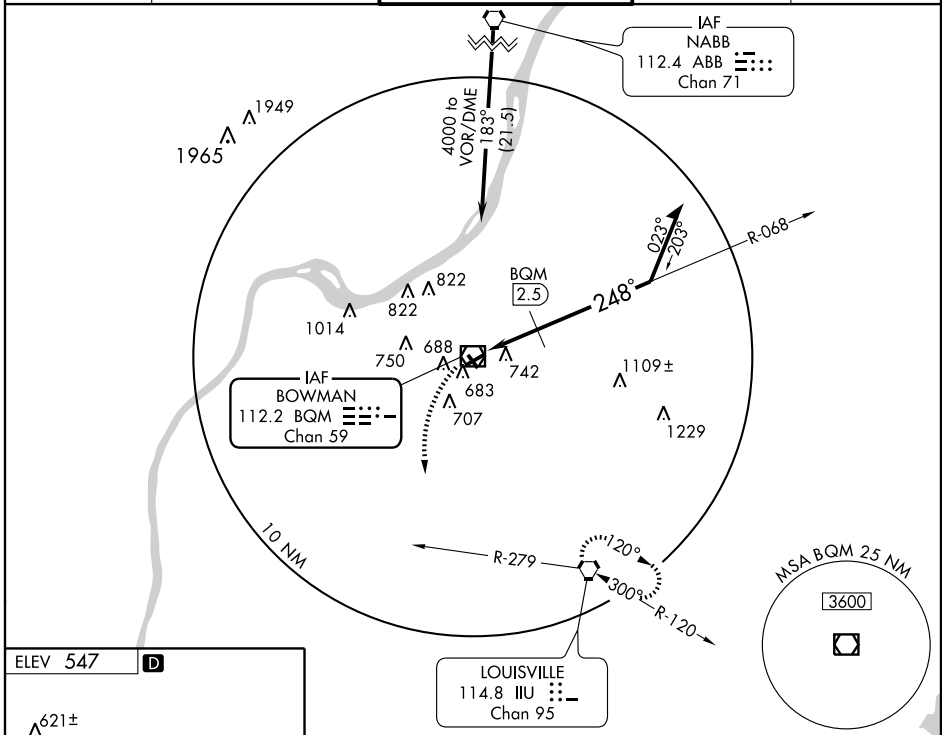
AL-238 (FAA)

VOR/DME BQM 112.2 Chan 59	APP CRS 248°	Rwy Idg 3856 TDZE 546 Apt Elev 547
---	------------------------	---

VOR RWY 24
LOUISVILLE/ BOWMAN FIELD (LOU)

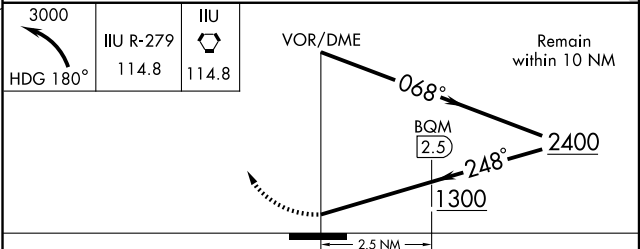
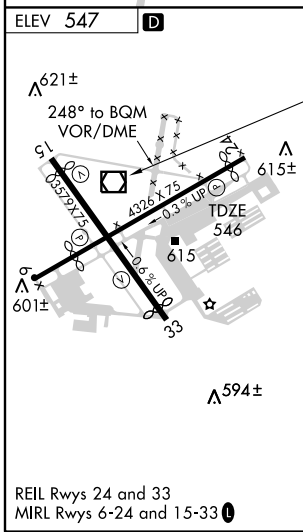
<p>ATIS 112.2</p>		<p>LOUISVILLE APP CON 132.075 327.0</p>	<p>BOWMAN TOWER ★ 119.5(CTAF) 257.625</p>	<p>GND CON 121.8</p>	<p>CLNC DEL 118.9</p>
------------------------------	--	--	---	---------------------------------	----------------------------------

MISSED APPROACH: Climbing left turn to 3000 via heading 180° and IIU VORTAC R-279° to IIU VORTAC and hold.



SE-1, 19 NOV 2009 to 17 DEC 2009

SE-1, 19 NOV 2009 to 17 DEC 2009



CATEGORY	A	B	C	D
S-24	1300-1 754 (800-1)	1300-1¼ 754 (800-1¼)		NA
CIRCLING	1300-1 753 (800-1)	1300-1¼ 753 (800-1¼)		NA
DME MINIMUMS				
S-24	1000-1	454 (500-1)		NA
CIRCLING	1060-1	513 (600-1)		NA

LOUISVILLE, KENTUCKY
Amdt 7B 09239

38° 14'N-85° 40'W

LOUISVILLE/ BOWMAN FIELD (LOU)
VOR RWY 24