

LOUISVILLE, KENTUCKY

AL-239 (FAA)

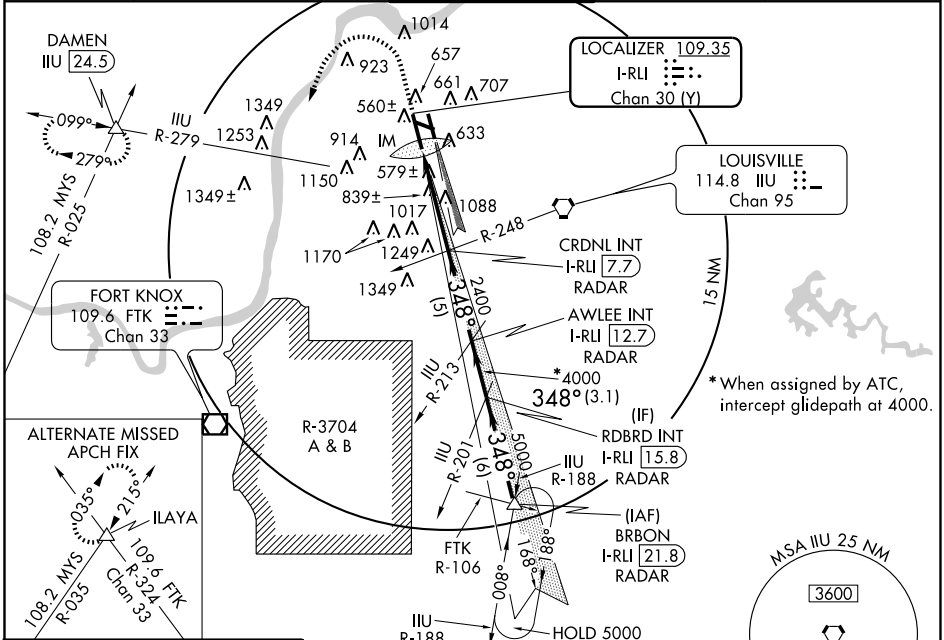
LOC/DME I-RLI <b>109.35</b> Chan <b>30</b> (Y)	APP CRS <b>348°</b>	Rwy Idg TDZE <b>464</b> Apt Elev <b>501</b>	<b>10000</b>
--	------------------------	---	--------------

# ILS RWY 35L (CAT II)

LOUISVILLE INTL-STANDIFORD FIELD (SDF)

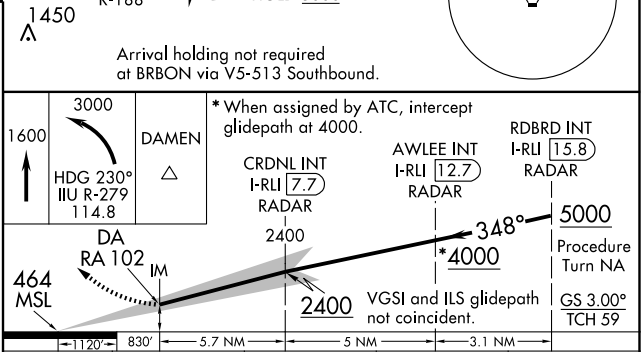
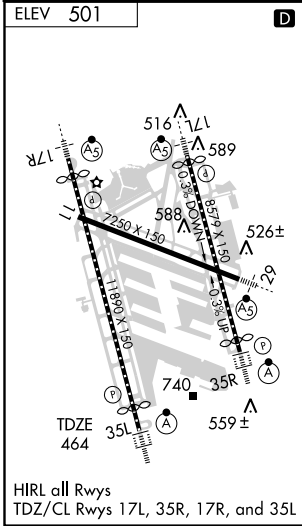
	ALSF-2 	MISSED APPROACH: Climb to 1600 then climbing left turn to 3000 via heading 230° and IIU R-279 to DAMEN Int/IIU 24.5 DME and hold.
--	------------	---

ATIS <b>118.725</b>	LOUISVILLE APP CON <b>132.075 327.0</b> (EAST) <b>123.675 327.0</b> (WEST)	LOUISVILLE TOWER <b>124.2 257.8</b>	GND CON <b>121.7 348.6</b>	CLNC DEL <b>126.1 275.8</b>
------------------------	--	--	-------------------------------	--------------------------------



SE-1, 19 NOV 2009 to 17 DEC 2009

SE-1, 19 NOV 2009 to 17 DEC 2009



CATEGORY	A	B	C	D
S-ILS 35L	564/12 100 RA 102			

**CATEGORY II - SPECIAL AIRCREW & AIRCRAFT CERTIFICATION REQUIRED**

LOUISVILLE, KENTUCKY  
Amdt 2 09071

LOUISVILLE INTL-STANDIFORD FIELD (SDF)  
38°10'N - 85°44'W  
**ILS RWY 35L (CAT II)**