

LOUISVILLE, KENTUCKY

AL-239 (FAA)

RNAV (GPS) RWY 17R

LOUISVILLE INTL-STANDIFORD FIELD (SDF)

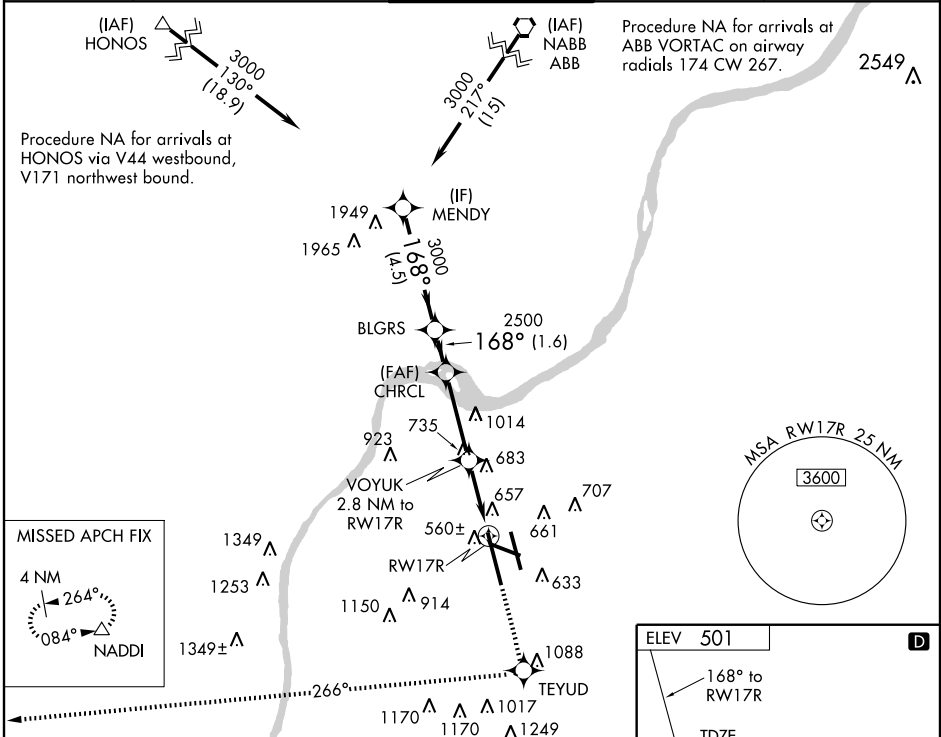
WAAS CH 57909 W17A	APP CRS 168°	Rwy Idg 10000 TDZE 490 Apt Elev 501
--	------------------------	--

▼ For inoperative MALSR, increase LPV all Cats. visibility to RVR 5000. For uncompensated Baro-VNAV systems, LNAV/VNAV NA below -16°C (4°F) or above 48°C (118°F). DME/DME RNP-0.3 NA.

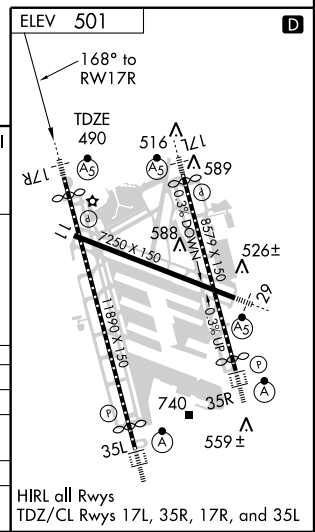


MISSED APPROACH: Climb to 3000 direct TEYUD and via 266° track to NADDI and hold.

ATIS 118.725	LOUISVILLE APP CON 132.075 327.0 (EAST) 123.675 327.0 (WEST)	LOUISVILLE TOWER 124.2 257.8	GND CON 121.7 348.6	CLNC DEL 126.1 275.8
------------------------	--	--	-------------------------------	--------------------------------



Procedure Turn NA	VGSI and RNAV glidepath not coincident.	3000	TEYUD	NADDI
MENDY	BLGRS	CHRCL	VOYUK	RW17R
3000	3000	2500	*1.4 NM to RW17R	*1.4 NM to RW17R
GS 3.00° TCH 50			2.8 NM to RW17R	*LNAV only.
	4.5 NM	1.6 NM	3.3 NM	1.4 NM
CATEGORY	A	B	C	D
LPV DA		755/24	265 (300-½)	
LNAV/VNAV DA		946/50	456 (500-1)	
LNAV MDA	1000/24	510 (500-½)	1000/50	510 (500-1)
CIRCLING	1040-1 539 (600-1)	1140-1 639 (700-1)	1140-1¾ 639 (700-¾)	1140-2 639 (700-2)



LOUISVILLE, KENTUCKY
Orig 09071

LOUISVILLE INTL-STANDIFORD FIELD (SDF)
38°10'N - 85°44'W
RNAV (GPS) RWY 17R

SE-1, 19 NOV 2009 to 17 DEC 2009

SE-1, 19 NOV 2009 to 17 DEC 2009