

RNAV (RNP) Z RWY 35L

LOUISVILLE INTL-STANDIFORD FIELD (SDF)

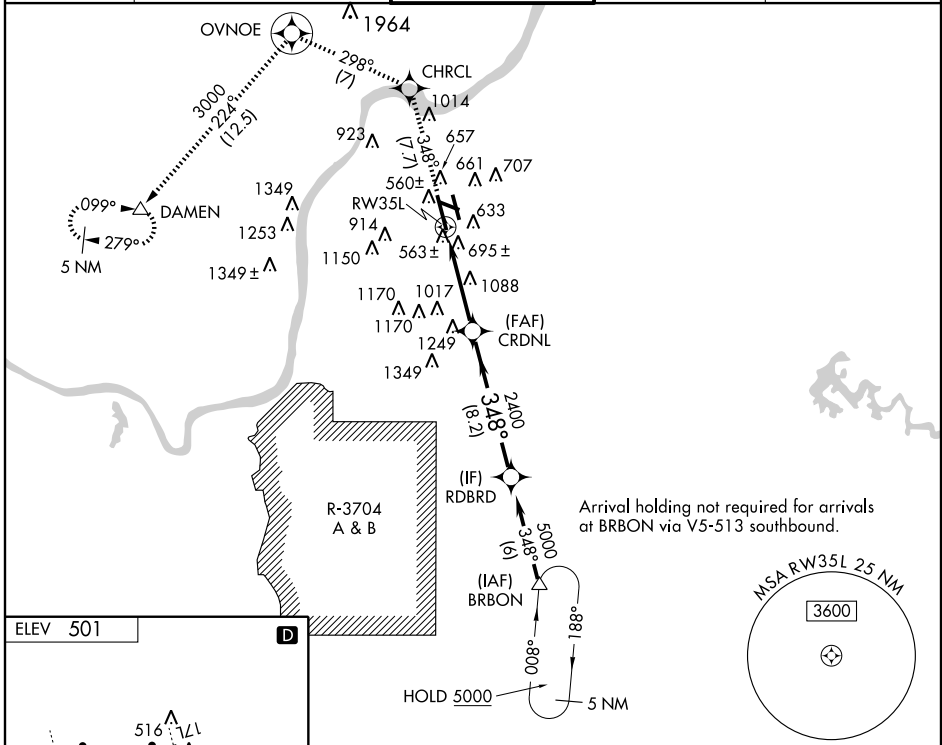
APP CRS	Rwy Idg	10000
348°	TDZE	464
	Apt Elev	501

GPS Required. For inoperative ALSF-2, increase RNP 0.16 all Cats. visibility to 1½ miles, RNP 0.30 all Cats. visibility to 2 miles. For uncompensated Baro-VNAV systems, procedure NA below -15°C (5°F) or above 48°C (118°F).



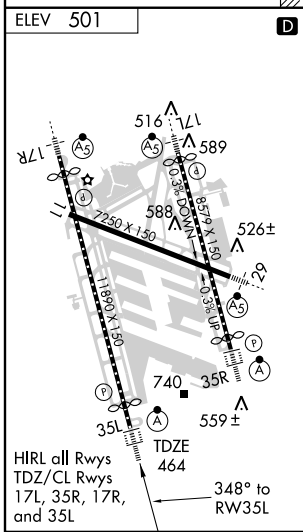
MISSED APPROACH: Climb to 3000 direct CHRCL and via 298° track to OVNOE and via 224° track to DAMEN and hold.

ATIS 118.725	LOUISVILLE APP CON 132.075 327.0 (EAST) 123.675 327.0 (WEST)	LOUISVILLE TOWER 124.2 257.8	GND CON 121.7 348.6	CLNC DEL 126.1 275.8
-------------------------------	---	---	--------------------------------------	---------------------------------------

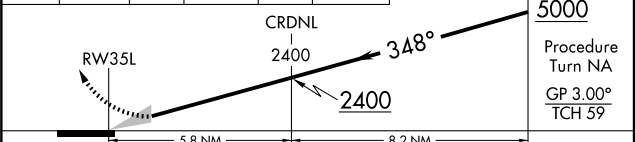


SE-1, 11 MAR 2010 to 08 APR 2010

SE-1, 11 MAR 2010 to 08 APR 2010



3000	CHRCL	OVNOE	DAMEN	VGS1 and RNAV glidepath not coincident. RDBRD
↑	☀ TRK 298°	☀ TRK 224°	△	



CATEGORY	A	B	C	D
RNP 0.16 DA		905/50	441 (500-1)	
RNP 0.30 DA		1057-1½	593 (600-1½)	

SPECIAL AIRCRAFT & AIRCREW AUTHORIZATION REQUIRED