


# RNAV (GPS) Y RWY 35L

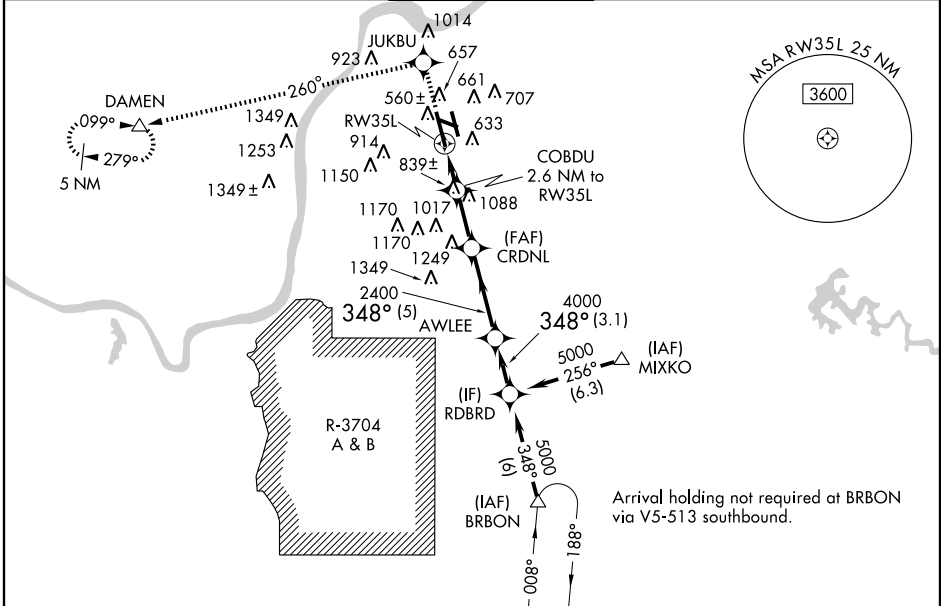
LOUISVILLE INTL-STANDIFORD FIELD (SDF)

WAAS CH <b>86203</b> <b>W35A</b>	APP CRS <b>348°</b>	Rwy Idg <b>10000</b> TDZE <b>464</b> Apt Elev <b>501</b>
--	------------------------	--

**▼** Inoperative table does not apply to LNAV/VNAV. For uncompensated Baro-VNAV systems, LNAV/VNAV NA below -16°C (4°F) or above 48°C (118°F). DME/DME RNP-0.3 NA. Visibility reduction by helicopters NA.

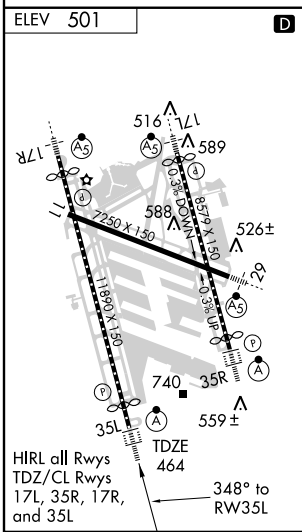
**ALSF-2**  
 MISSED APPROACH: Climb to 3000 direct JUKBU and via 260° track to DAMEN and hold.


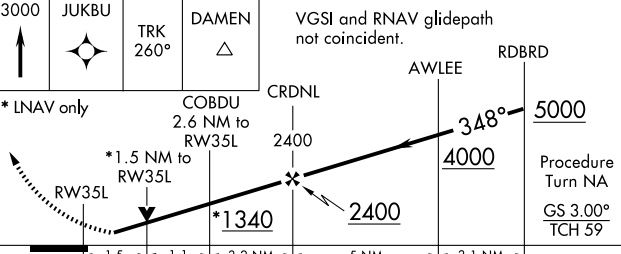
ATIS <b>118.725</b>	LOUISVILLE APP CON <b>132.075 327.0 (EAST)</b> <b>123.675 327.0 (WEST)</b>	LOUISVILLE TOWER <b>124.2 257.8</b>	GND CON <b>121.7 348.6</b>	CLNC DEL <b>126.1 275.8</b>
------------------------	--	--	-------------------------------	--------------------------------



SE-1, 19 NOV 2009 to 17 DEC 2009

SE-1, 19 NOV 2009 to 17 DEC 2009



ELEV 501				
1450	3000	JUKBU	DAMEN	VGSI and RNAV glidepath not coincident.
↑	☀	TRK 260°	△	
* LNAV only	COBDU 2.6 NM to RW35L	CRDNL	AWLEE	RDBRD
	* 1.5 NM to RW35L	2400	348°	5000
	* 1340	2400	4000	Procedure Turn NA
				GS 3.00°
				TCH 59
	1.5	1.1	3.2 NM	5 NM
				3.1 NM
CATEGORY	A	B	C	D
LPV DA		714/24	250 (300-½)	
LNAV/VNAV DA		1648-5	1184 (1200-5)	
LNAV MDA	1000/24	536 (500-½)	1000/50	1000/60
			536 (500-1)	536 (500-1¼)
CIRCLING	1040-1	1140-1	1140-1¾	1140-2
	539 (600-1)	639 (700-1)	639 (700-1¾)	639 (700-2)