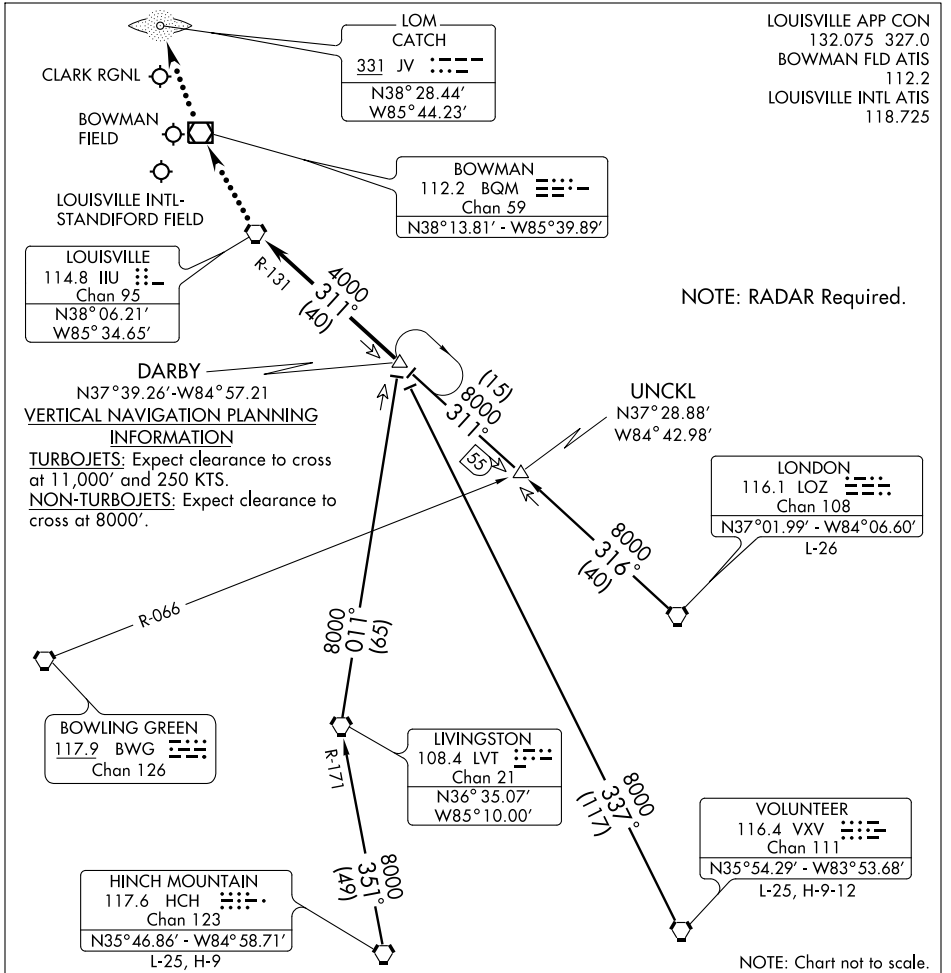


# DARBY FOUR ARRIVAL (DARBY.DARBY4)

LOUISVILLE, KENTUCKY



**HINCH MOUNTAIN TRANSITION (HCH.DARBY4):** From over HCH VORTAC via HCH R-351 and LVT R-171 to LVT VORTAC, then via LVT R-011 to DARBY INT. Thence. . . .

**LONDON TRANSITION (LOZ.DARBY4):** From over LOZ VORTAC via LOZ R-316 to UNCKL INT, then via IIIU R-131 to DARBY INT. Thence. . . .

**UNCKL TRANSITION (UNCKL.DARBY4):** From over UNCKL INT via IIIU R-131 to DARBY INT. Thence. . . .

**VOLUNTEER TRANSITION (VXV.DARBY4):** From over VXV VORTAC via VXV R-337 to DARBY INT. Thence. . . .

. . . . From over DARBY INT via IIIU R-131 to IIIU VORTAC. Expect radar vectors to final course.

**LOST COMMUNICATIONS:**  
For JVV - At IIIU VORTAC, proceed direct BQM VOR/DME, then direct CATCH (JV) LOM. Maintain 4000 feet until CATCH LOM.

# DARBY FOUR ARRIVAL (DARBY.DARBY4)

LOUISVILLE, KENTUCKY

SE-1, 19 NOV 2009 to 17 DEC 2009

SE-1, 19 NOV 2009 to 17 DEC 2009