

LUBBOCK, TEXAS

# HI-VOR/DME or TACAN RWY 26

VORTAC LBB <b>109.2</b> Chan <b>29</b>	APCH CRS <b>282°</b>	Rwy ldg TDZE Arpt Elev <b>8001</b> <b>3255</b> <b>3282</b>
--	-------------------------	---

JAL-241 [USAF]

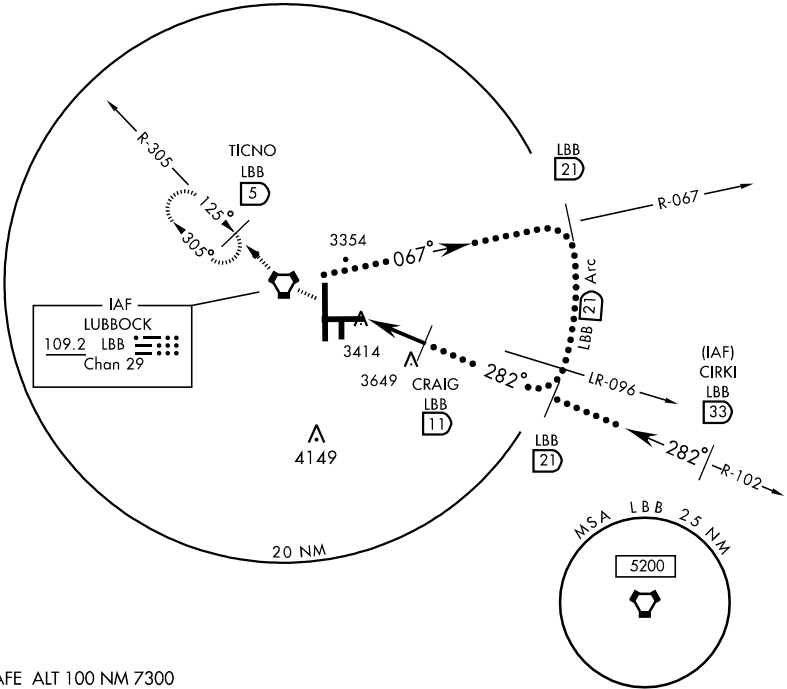
LUBBOCK PRESTON SMITH INTL (KLBB)

\* Inoperative Table does not apply.

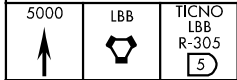


MISSED APPROACH: Climb to 5000 direct LBB VORTAC and via LBB R-305 to TICNO (LBB 5 DME) and hold.

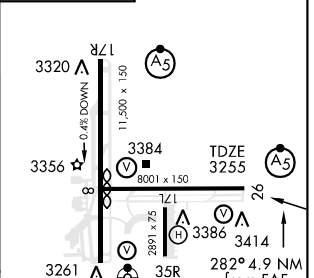
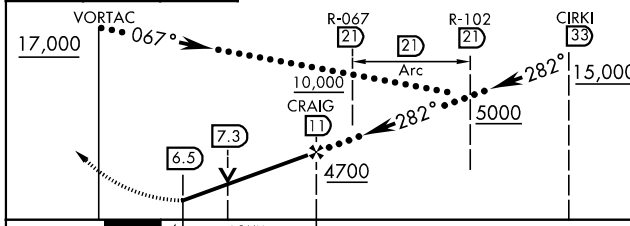
ATIS <b>125.3</b>	LUBBOCK APP CON <b>119.2 351.8</b>	LUBBOCK TOWER <b>120.5 239.3</b>	GND CON <b>121.9 348.6</b>	CLNC DEL <b>125.8 281.55</b>	ASR
----------------------	---------------------------------------	-------------------------------------	-------------------------------	---------------------------------	-----



EMERG SAFE ALT 100 NM 7300



ELEV 3282 Rwy 8 ldg 7801'



CATEGORY	C	D	E
S-26 *	3680-1¼ 425 (400-1¼)	425 (400-1¼)	3680-1½ 425 (400-1½)
CIRCLING	3740-1½ 459 (500-1½)	3840-2 559 (600-2)	3980-2½ 699 (700-2½)

REIL Rwy 8  
HIRL Rwy 8-26 and 17R-35L

LUBBOCK, TEXAS  
Orig 05048

33°40'N-101°49'W

LUBBOCK PRESTON SMITH INTL (KLBB)

# HI-VOR/DME or TACAN RWY 26

SC-2, 11 MAR 2010 to 08 APR 2010

SC-2, 11 MAR 2010 to 08 APR 2010