

# ILS or LOC RWY 26

LUBBOCK PRESTON SMITH INTL (LBB)

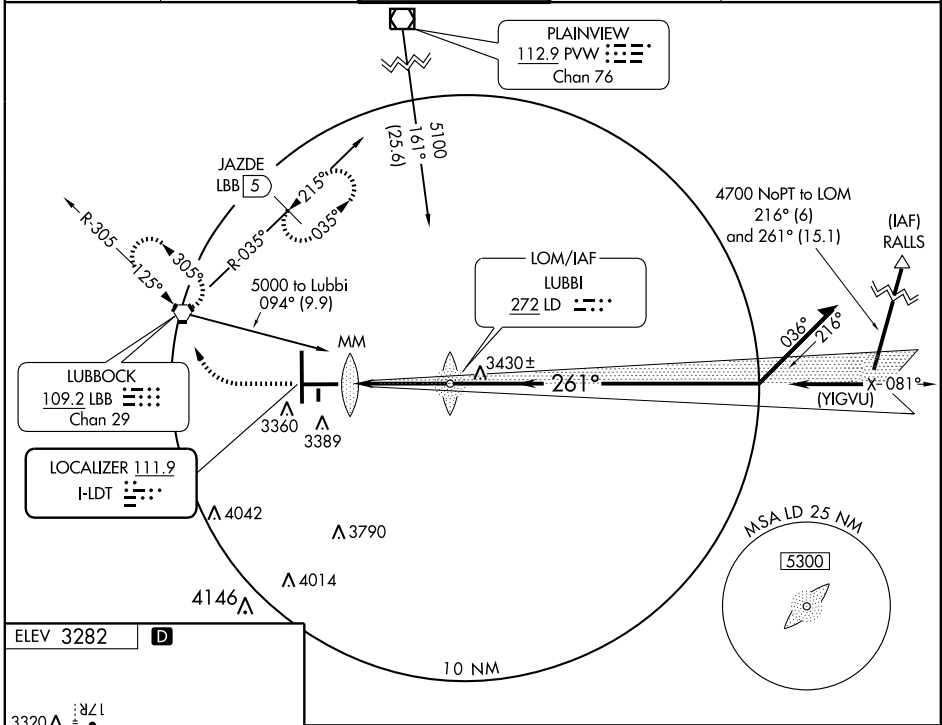
LOC I-DT <b>111.9</b>	APP CRS <b>261°</b>	Rwy Idg <b>8001</b>
		TDZE <b>3256</b>
		Apt Elev <b>3282</b>

**ASR** For inoperative MALSR increase S-LOC Cat D and E visibility to RVR 5000, S-ILS Cat E to RVR 4000.  
\* Vis Cat A/B/C/D RVR 1800 authorized with the use of FD or AP or HUD to DA.



**MISSED APPROACH:** Climb to 3800, then climbing right turn to 4800 direct LBB VORTAC and hold. (TACAN aircraft climb to 3800, then climbing right turn to 5100 via heading 300° and LBB R-035 to JAZDE Int / 5 DME and hold NE, left turn, 215° inbound).

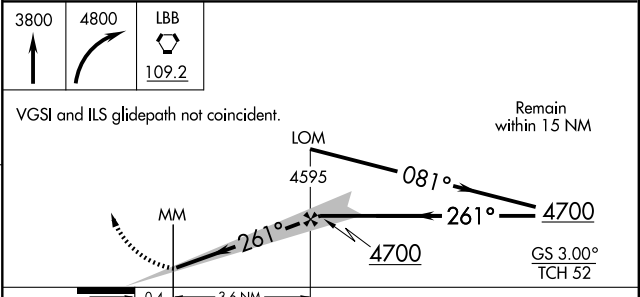
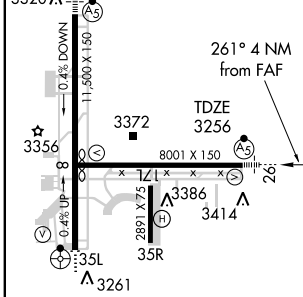
ATIS <b>125.3</b>	LUBBOCK APP CON <b>119.2 351.8</b>	LUBBOCK TOWER <b>120.5 239.3</b>	GND CON <b>121.9 348.6</b>	CLNC DEL <b>125.8 281.55</b>
----------------------	---------------------------------------	-------------------------------------	-------------------------------	---------------------------------



SC-2, 11 MAR 2010 to 08 APR 2010

SC-2, 11 MAR 2010 to 08 APR 2010

ELEV 3282	<b>D</b>
-----------	----------



REIL Rwy 8  
HIRL Rwys 8-26 and 17R-35L

FAF to MAP 4 NM

Knots	60	90	120	150	180
Min:Sec	4:00	2:40	2:00	1:36	1:20

CATEGORY	A	B	C	D	E
S-ILS 26	* 3456/24 200 (200-½)				
S-LOC 26	3560/24 304 (300-½)	3560/40 304 (300-¾)			
CIRCLING	3720-1 438 (500-1)	3740-1 458 (500-1)	3740-1½ 458 (500-1½)	3840-2 558 (600-2)	3980-2½ 698 (700-2½)