

LUBBOCK, TEXAS

AL-241 (FAA)

# RNAV (GPS) RWY 17R

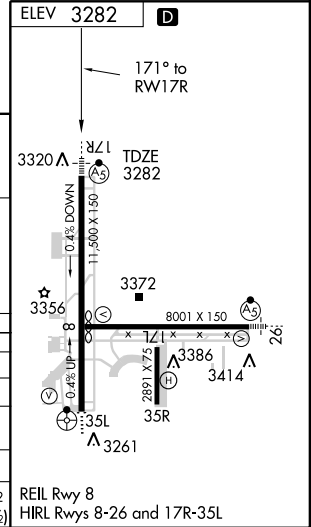
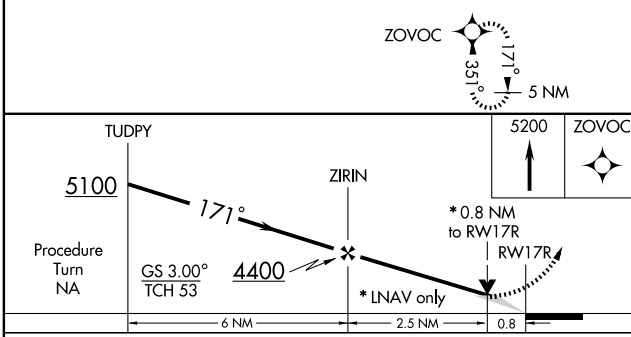
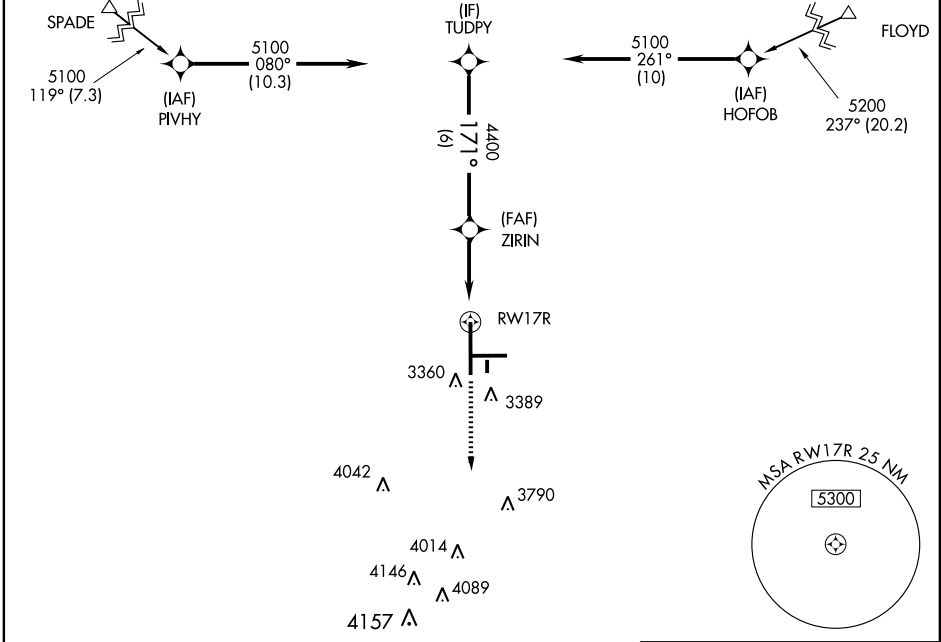
LUBBOCK PRESTON SMITH INTL (LBB)

WAAS CH <b>40028</b> <b>W17A</b>	APP CRS <b>171°</b>	Rwy Idg <b>11500</b> TDZE <b>3282</b> Apt Elev <b>3282</b>
--	------------------------	--

**ASR** **BARO-VNAV NA** below -21°C (-6°F). DME/DME RNP-0.3 NA.  
For inoperative MALSRS increase LPV visibility to RVR 4000 all Cats, LNAV/VNAV Cats A,B to RVR 5000.  
Inoperative table does not apply to LNAV Cats D,E.

**MALSRS** MISSED APPROACH: Climb to 5200 direct ZOVOC and hold.

ATIS <b>125.3</b>	LUBBOCK APP CON <b>119.2 351.8</b>	LUBBOCK TOWER <b>120.5 239.3</b>	GND CON <b>121.9 348.6</b>	CLNC DEL <b>125.8 281.55</b>
----------------------	---------------------------------------	-------------------------------------	-------------------------------	---------------------------------



CATEGORY	A	B	C	D	E
LPV DA	3532/24 250 (300-½)				
LNAV/VNAV DA	3570/24	288 (300-½)	3570/40		288 (300-¾)
LNAV MDA	3580/24	298 (300-½)	3580/50		298 (300-1)
CIRCLING	3720-1 438 (500-1)	3740-1 458 (500-1)	3740-1½ 458 (500-1½)	3840-2 558 (600-2)	3980-2 ½ 698 (700-2 ½)

LUBBOCK, TEXAS  
Amdt 1 09071

33° 40' N-101° 49' W

LUBBOCK PRESTON SMITH INTL (LBB)  
**RNAV (GPS) RWY 17R**

SC-2, 11 MAR 2010 to 08 APR 2010

SC-2, 11 MAR 2010 to 08 APR 2010