

CEDAR RAPIDS, IOWA

AL-250 (FAA)

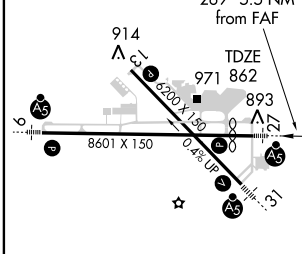
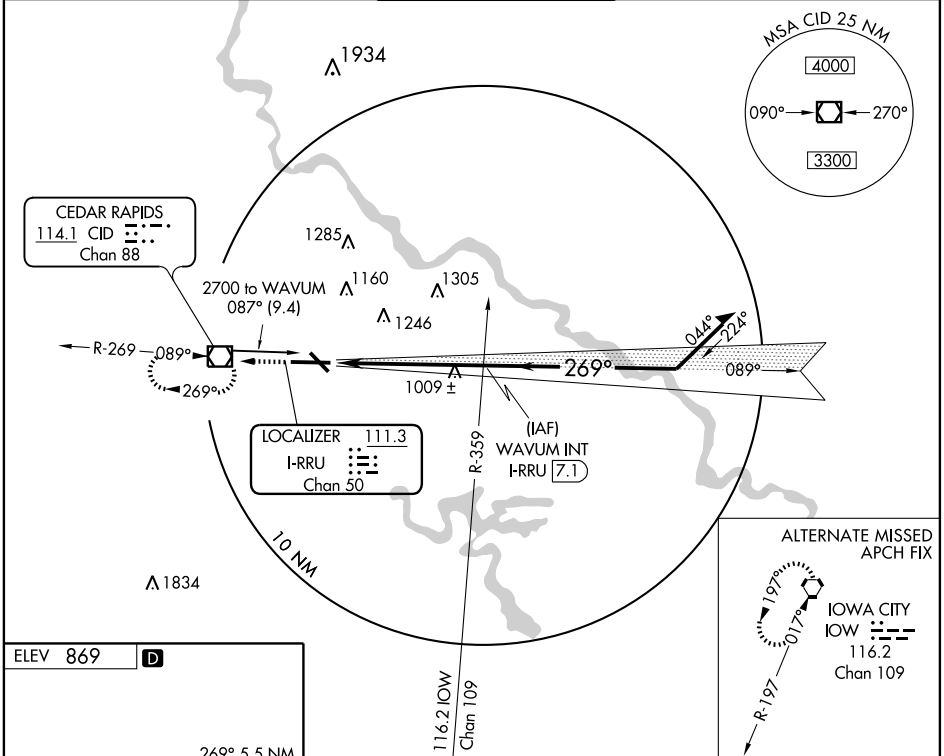
LOC/DME I-RRU 111.3 Chan 50	APP CRS 269°	Rwy Idg TDZE Apt Elev	8175 862 869
--	------------------------	-----------------------------	---

ILS or LOC RWY 27

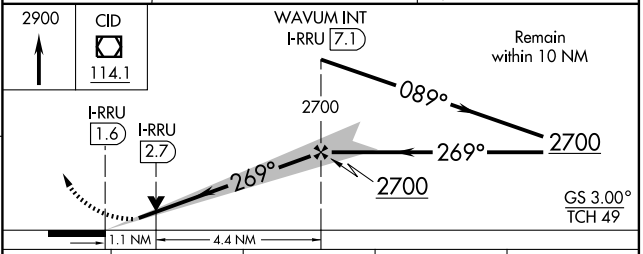
CEDAR RAPIDS/ THE EASTERN IOWA (CID)

⚠ If local altimeter setting not received, use Iowa City altimeter setting and increase all DAs/MDAs 80 feet. VDP NA when using Iowa City altimeter setting.	MALSR 	MISSED APPROACH: Climb to 2900 direct CID VOR/DME and hold, continue climb-in-hold to 2900.
---	-----------	---

ATIS 124.15	CEDAR RAPIDS APP CON* 119.7 266.8	CEDAR RAPIDS TOWER* 118.7 (CTAF) 266.8	GND CON 121.6	CLNC DEL 125.45
-----------------------	---	--	-------------------------	---------------------------



MIRL Rwy 13-31	HIRL Rwy 9-27	REIL Rwy 13			
FAF to MAP 5.5 NM					
Knots	60	90	120	150	180
Min:Sec	5:30	3:40	2:45	2:12	1:50



CATEGORY	A	B	C	D
S-ILS 27	1062/24 200 (200-½)			
S-LOC 27	1260/24 398 (400-½)			
CIRCLING	1280-1 411 (500-1)	1320-1 451 (500-1)	1320-1½ 451 (500-1½)	1260/40 398 (400-¾)

CEDAR RAPIDS, IOWA
Amdt 6 08325

41°53'N-91°43'W

ILS or LOC RWY 27

NC-3, 19 NOV 2009 to 17 DEC 2009

NC-3, 19 NOV 2009 to 17 DEC 2009