

CEDAR RAPIDS, IOWA

AL-250 (FAA)

WAAS Chan 86201 W13A	APP CRS 134°	Rwy Idg 6200 TDZE 869 Apt Elev 869
-----------------------------------	------------------------	---

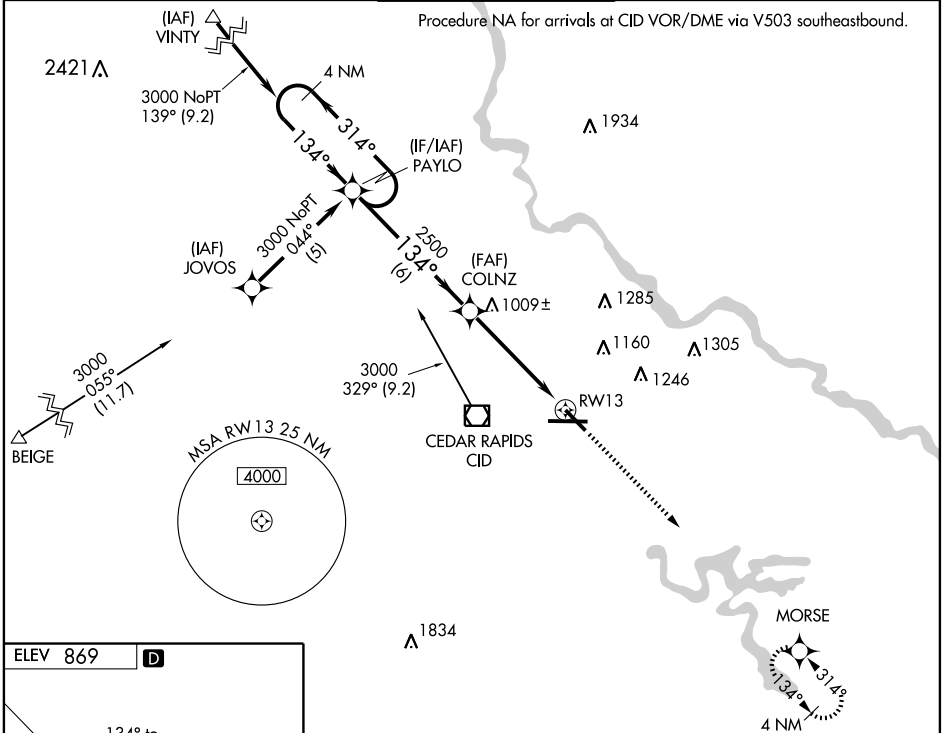
RNAV (GPS) RWY 13

CEDAR RAPIDS/ THE EASTERN IOWA (CID)

Baro-VNAV NA below-16° (4°F).
DME/DME RNP-0.3 NA.
Straight in minimums NA at night when control tower closed.

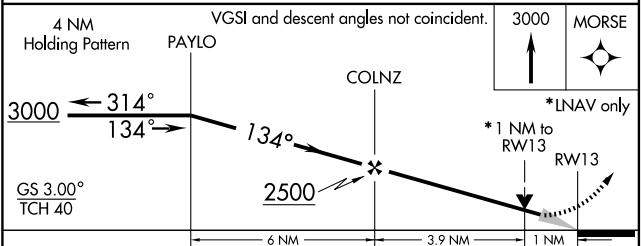
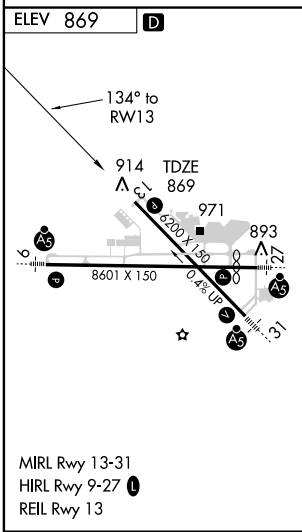
MISSED APPROACH: Climb to 3000 direct MORSE and hold.

ATIS 124.15	CEDAR RAPIDS APP CON* 119.7 266.8	CEDAR RAPIDS TOWER* 118.7 (CTAF) 266.8	GND CON 121.6	CLNC DEL 125.45
-----------------------	---	--	-------------------------	---------------------------



NC-3, 19 NOV 2009 to 17 DEC 2009

NC-3, 19 NOV 2009 to 17 DEC 2009



CATEGORY	A	B	C	D
LPV DA	1120-1 251 (300-1)			
LNAV/VNAV DA	1200-1¼ 331 (400-1¼)			
LNAV MDA	1220-1 351 (400-1)			1220-1¼ 351 (400-1¼)
CIRCLING	1280-1¼ 411 (500-1¼)	1320-1¼ 451 (500-1¼)	1320-1½ 451 (500-1½)	1420-2 551 (600-2)

CEDAR RAPIDS, IOWA
Amdt 1A 08325

RNAV (GPS) RWY 13

41°53'N-91°43'W