

CEDAR RAPIDS, IOWA

AL-250 (FAA)

WAAS Chan <b>77503</b> W31A	APP CRS <b>314°</b>	Rwy ldg TDZE Apt Elev	<b>6200</b> <b>861</b> <b>869</b>
-----------------------------------	------------------------	-----------------------------	---

# RNAV (GPS) RWY 31

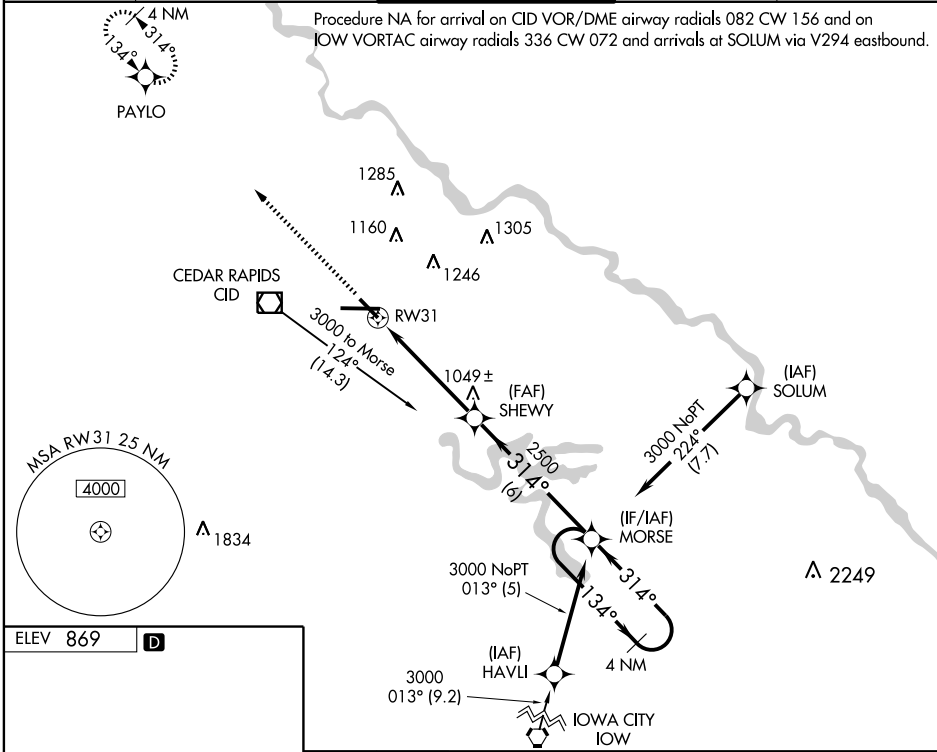
CEDAR RAPIDS/ THE EASTERN IOWA (CID)

**Baro-VNAV NA below -16°C (4°F).**  
DME/DME RNP- 0.3 NA.  
Straight in minimums NA at night when control tower closed.  
For inoperative MALS increase LNAV/VNAV CAT D visibility to 1 and LNAV CAT D visibility to 1½ mile.



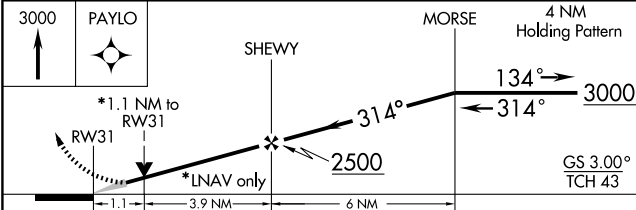
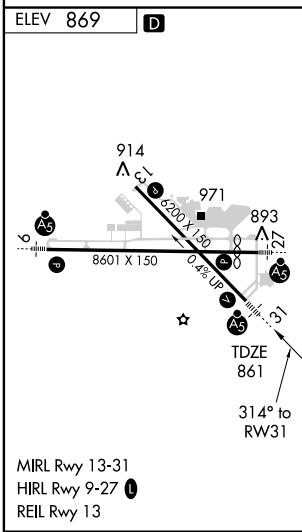
**MISSED APPROACH:** Climb to 3000 direct PAYLO and hold.

ATIS <b>124.15</b>	CEDAR RAPIDS APP CON * <b>119.7 266.8</b>	CEDAR RAPIDS TOWER * <b>118.7 (CTAF) 0 266.8</b>	GND CON <b>121.6</b>	CLNC DEL <b>125.45</b>
-----------------------	--	---	-------------------------	---------------------------



NC-3, 19 NOV 2009 to 17 DEC 2009

NC-3, 19 NOV 2009 to 17 DEC 2009



CATEGORY	A	B	C	D
LPV DA	1120-½ 259 (300-½)			
LNAV/VNAV DA	1140-½ 279 (300-½)			1140-¾ 279 (300-¾)
LNAV MDA	1240-½ 379 (400-½)			1240-1 379 (400-1)
CIRCLING	1280-1 411 (500-1)	1320-1 451 (500-1)	1320-1½ 451 (500-1½)	1420-2 551 (600-2)

CEDAR RAPIDS, IOWA  
Amdt 1 08325

# CEDAR RAPIDS/ THE EASTERN IOWA (CID) RNAV (GPS) RWY 31

41°53'N-91°43'W