


WAAS CH 77603 W09A	APP CRS 089°	Rwy ldg 8175 TDZE 855 Apt Elev 869
--	------------------------	---

RNAV (GPS) RWY 9

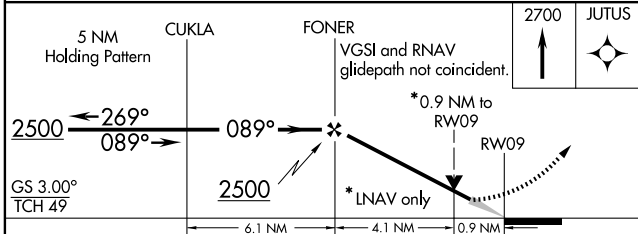
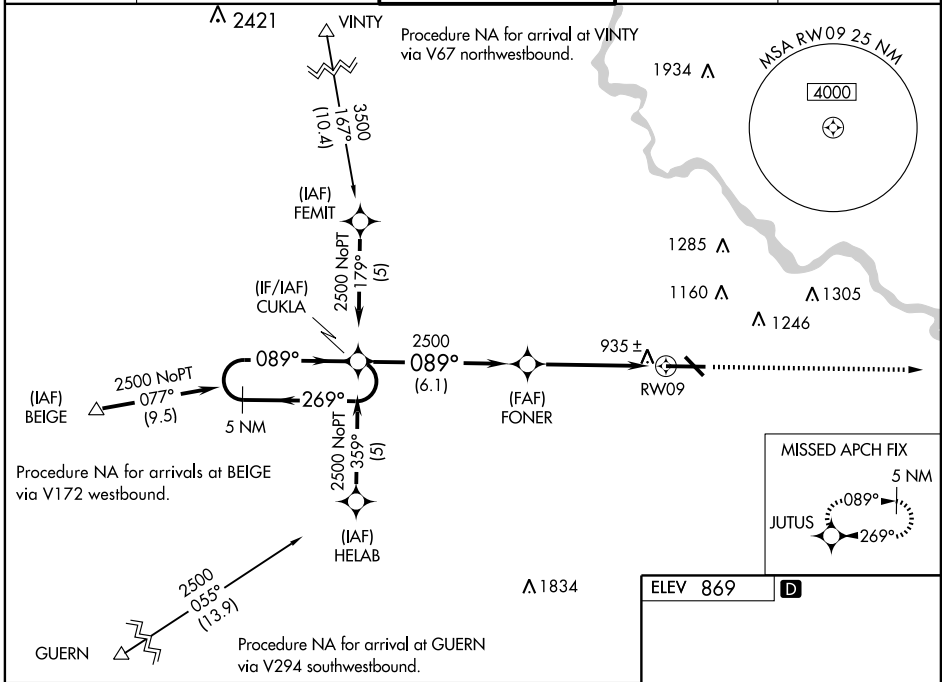
CEDAR RAPIDS/ THE EASTERN IOWA (CID)

⚠ Baro-VNAV NA when using Iowa City altimeter setting.
⚠ If local altimeter setting not received, use Iowa City altimeter setting and increase all DAs/MDAs 80 feet. VDP NA with Iowa City altimeter setting.
 For uncompensated Baro-VNAV systems, LNAV/VNAV NA below -16°C (4°F) or above 47°C (116°F). DME/DME RNP-0.3 NA.
 For inoperative MALSR increase LNAV CAT D visibility to RVR 6000.

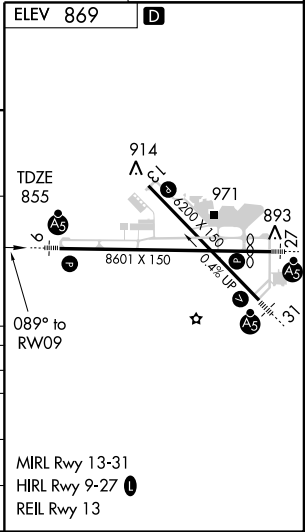
MALSR 

MISSED APPROACH: Climb to 2700 direct JUTUS and hold.

ATIS 124.15	CEDAR RAPIDS APP CON * 119.7 266.8	CEDAR RAPIDS TOWER * 118.7 (CTAF) 266.8	GND CON 121.6	CLNC DEL 125.45
-----------------------	--	--	-------------------------	---------------------------



CATEGORY	A	B	C	D
LPV DA	1105/24		250 (300-½)	
LNAV/VNAV DA	1204/40		349 (400-¾)	
LNAV MDA	1200/24		345 (400-½)	
			1200/50	
			345 (400-1)	
CIRCLING	1280-1 411 (500-1)	1320-1 451 (500-1)	1320-1½ 451 (500-1½)	1420-2 551 (600-2)



NC-3, 19 NOV 2009 to 17 DEC 2009

NC-3, 19 NOV 2009 to 17 DEC 2009