

CEDAR RAPIDS, IOWA


AL-250 (FAA)

VOR RWY 27

CEDAR RAPIDS/ THE EASTERN IOWA (CID)

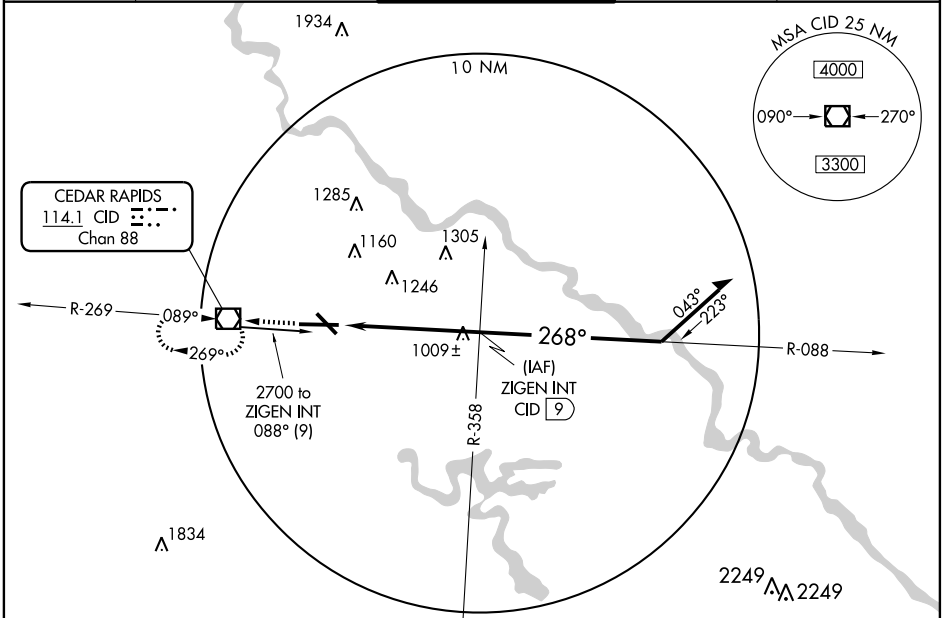
VOR/DME CID 114.1 Chan 88	APP CRS 268°	Rwy Idg 8175 TDZE 862 Apt Elev 869
---	------------------------	---

⚠ If local altimeter setting not received, use Iowa City altimeter setting and increase all MDAs 80 feet.
⚠ For inoperative MALSRS increase S-27 Cat. D visibility to RVR 6000. VDP NA with Iowa City altimeter setting.

MALSRS


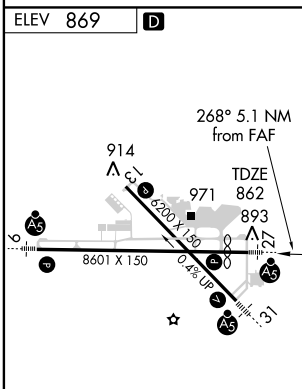
MISSED APPROACH: Climb to 2900 direct CID VOR/DME and hold, continue climb-in-hold to 2900.

ATIS 124.15	CEDAR RAPIDS APP CON * 119.7 266.8	CEDAR RAPIDS TOWER * 118.7 (CTAF) 0 266.8	GND CON 121.6	CLNC DEL 125.45
-----------------------	--	---	-------------------------	---------------------------



NC-3, 19 NOV 2009 to 17 DEC 2009

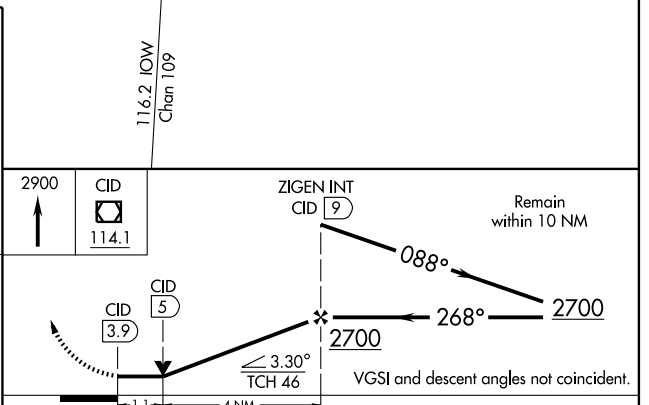
NC-3, 19 NOV 2009 to 17 DEC 2009



MIRL Rwy 13-31
 HIRL Rwy 9-27
 REIL Rwy 13

FAF to MAP 5.1 NM

Knots	60	90	120	150	180
Min:Sec	5:06	3:24	2:33	2:02	1:42



CATEGORY	A	B	C	D
S-27	1260/24 398 (400-1/2)			1260/50 398 (400-1)
CIRCLING	1280-1 411 (500-1)	1320-1 451 (500-1)	1320-1 1/2 451 (500-1 1/2)	1420-2 551 (600-2)

CEDAR RAPIDS, IOWA
 Amdt 13 08325

CEDAR RAPIDS/ THE EASTERN IOWA (CID)
VOR RWY 27

41°53'N-91°43'W