

CEDAR RAPIDS, IOWA

AL-250 (FAA)

# VOR RWY 9

CEDAR RAPIDS/ THE EASTERN IOWA (CID)

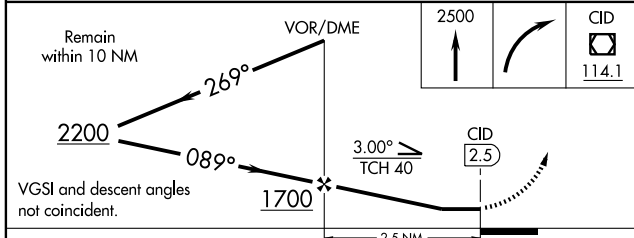
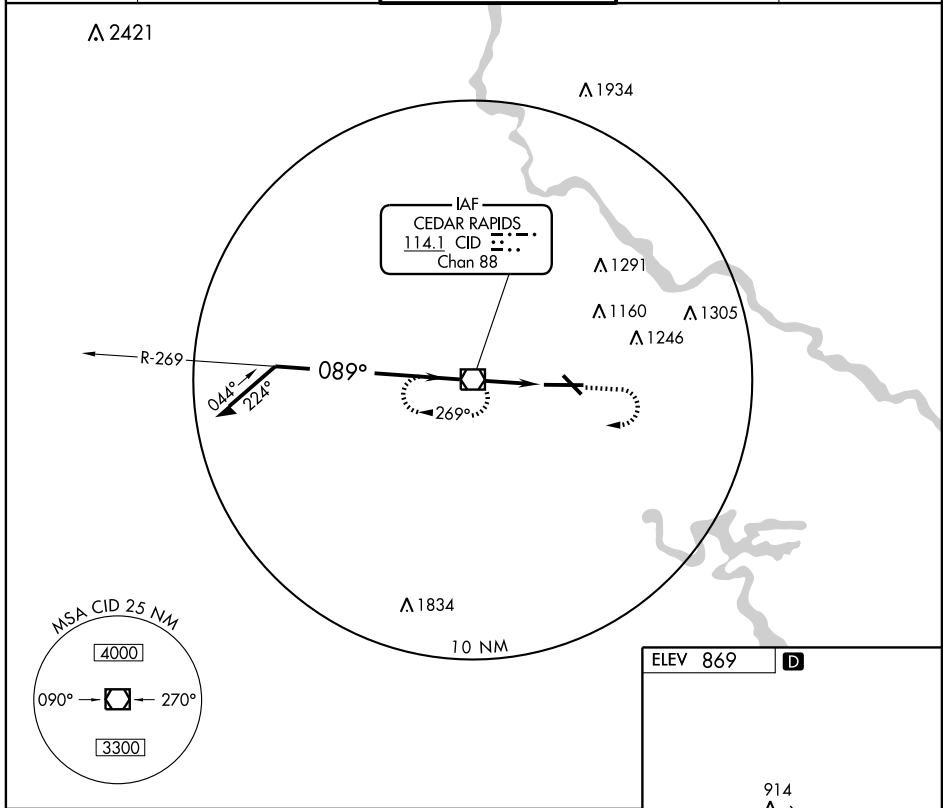
VOR/DME CID <b>114.1</b> Chan <b>88</b>	APP CRS <b>089°</b>	Rwy Idg <b>8175</b> TDZE <b>855</b> Apt Elev <b>869</b>
---	------------------------	---

MALSR For inoperative MALSR increase S-9 Cat D visibility to RVR 6000.	MISSED APPROACH: Climb to 2500 then right turn direct CID VOR/DME and hold.		
	MALSR		

ATIS <b>124.15</b>	CEDAR RAPIDS APP CON * <b>119.7 266.8</b>	CEDAR RAPIDS TOWER * <b>118.7 (CTAF) 266.8</b>	GND CON <b>121.6</b>	CLNC DEL <b>125.45</b>
-----------------------	--	---	-------------------------	---------------------------

NC-3, 19 NOV 2009 to 17 DEC 2009

NC-3, 19 NOV 2009 to 17 DEC 2009



ELEV 869	<b>D</b>
TDZE 855	
089° 2.5 NM from FAF	MIRL Rwy 13-31 HIRL Rwy 9-27 REIL Rwy 13
FAF to MAP 2.5 NM	
Knots	60 90 120 150 180
Min:Sec	2:30 1:40 1:15 1:00 0:50

CATEGORY	A	B	C	D
S-9	1240/24 385 (400-½)		1240/50 385 (400-1)	
CIRCLING	1280-1 411 (500-1)	1320-1 451 (500-1)	1320-1½ 451 (500-1½)	1420-2 551 (600-2)

CEDAR RAPIDS, IOWA  
Amdt 16C 08325

CEDAR RAPIDS/ THE EASTERN IOWA (CID)  
**VOR RWY 9**

41°53'N-91°43'W