

# BRUTE FIVE DEPARTURE

MEDFORD/ROGUE VALLEY INTL-MEDFORD (MF'R)  
SL-251 (FAA) MEDFORD, OREGON

ATIS 127.25  
GND CON 121.8  
MEDFORD TOWER \* 119.4 (CTAF) 257.8  
CASCADE DEP CON \* 124.3 379.9  
SEATTLE CENTER 124.85 306.3

NOTE: DME required.

### TAKE-OFF MINIMUMS

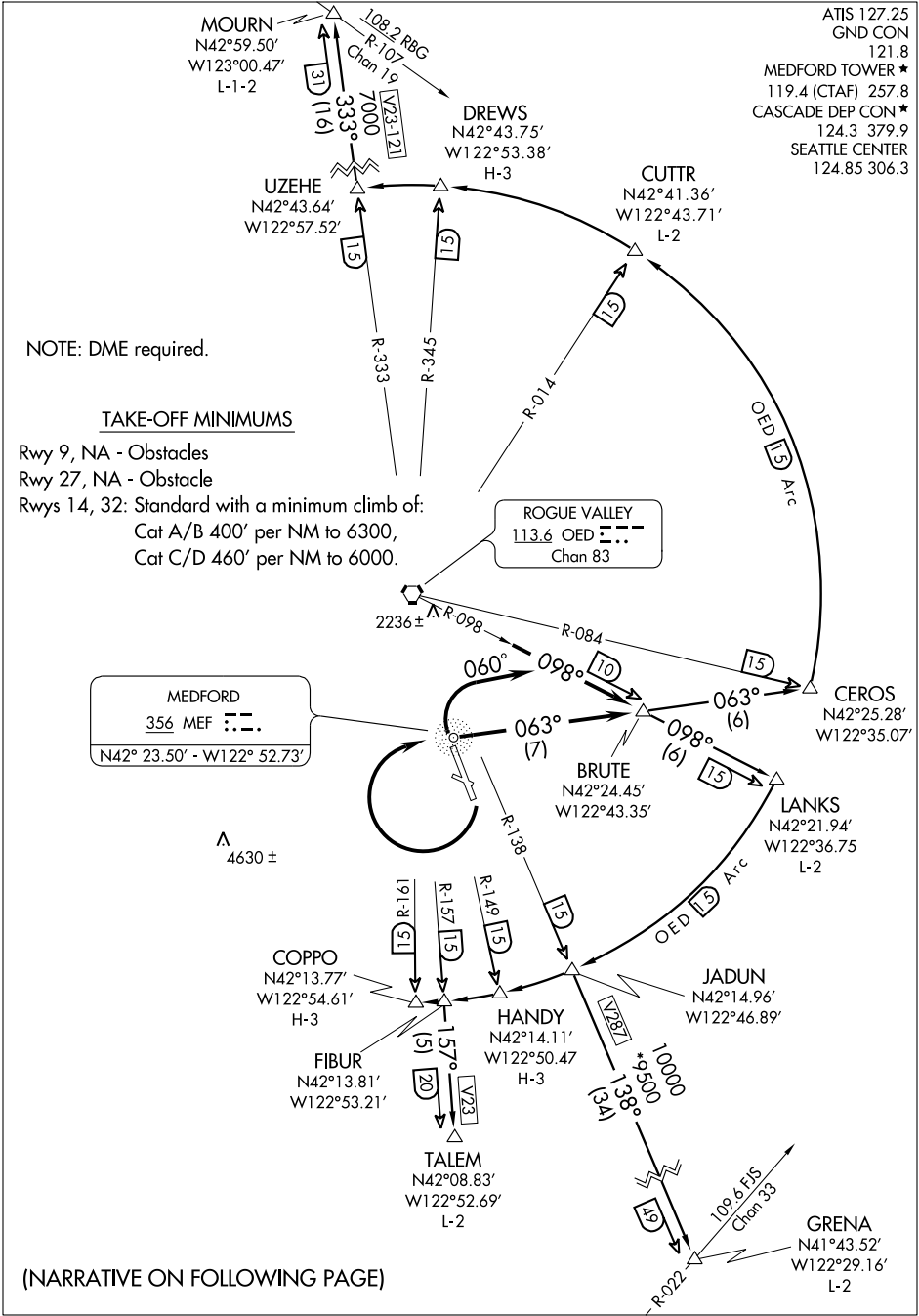
Rwy 9, NA - Obstacles  
Rwy 27, NA - Obstacle  
Rwys 14, 32: Standard with a minimum climb of:  
Cat A/B 400' per NM to 6300,  
Cat C/D 460' per NM to 6000.

MEDFORD  
356 MEF  
N42° 23.50' - W122° 52.73'

ROGUE VALLEY  
113.6 OED  
Chan 83

NW-1, 19 NOV 2009 to 17 DEC 2009

NW-1, 19 NOV 2009 to 17 DEC 2009



(NARRATIVE ON FOLLOWING PAGE)