

RNAV (GPS) Y RWY 2C

NASHVILLE INTL (BNA)

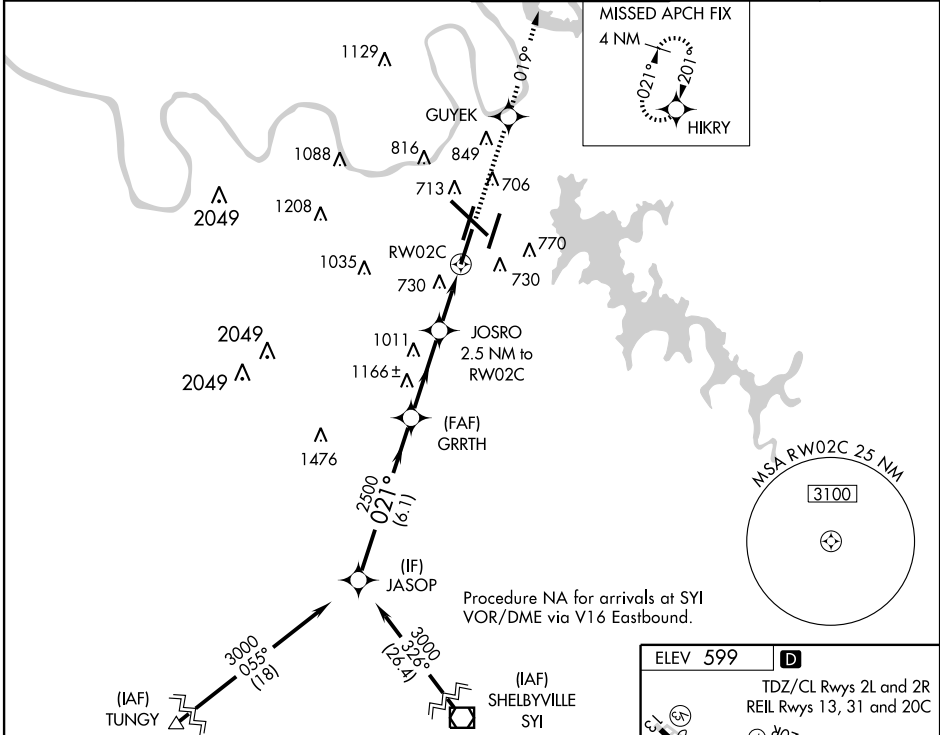
WAAS CH 70613 W02B	APP CRS 021°	Rwy Idg 8000 TDZE 587 Apt Elev 599
---------------------------------	------------------------	---

▼ For inoperative MALSR, increase LNAV Cat D visibility to RVR 6000.
For uncompensated Baro-VNAV systems, LNAV/VNAV NA below -16°C (4°F) or above 48°C (118°F). DME/DME RNP-0.3 NA.

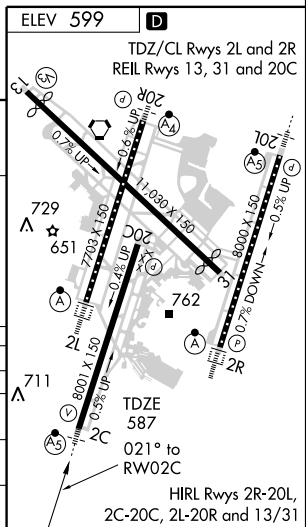


MISSED APPROACH: Climb to 4000 direct GUYEK and via track 019° to HIKRY and hold, continue climb-in-hold to 4000.

ATIS 135.1	NASHVILLE APP CON 200°-018° 120.6 387.0 019°-199° 127.175 360.7	NASHVILLE TOWER 118.6 257.8	GND CON 121.9 348.6	CLNC DEL 126.05
----------------------	---	---------------------------------------	-------------------------------	---------------------------



CATEGORY LPV DA LNAV/ VNAV LNAV MDA CIRCLING	VGS1 and RNAV glidepath not coincident. JASOP		4000 GUYEK TRK 019° HIKRY	
	Procedure Turn NA GS 3.00° TCH 60	3000 021° 2500 6.1 NM	2500 GRRTH 3.3 NM *1420 1.3 NM JOSRO 2.5 NM to RW02C *1.2 NM to RW02C	*LNAV only. 1.2 NM
	A	B	C	D
	787/24		200 (200-½)	
	1041/50		454 (500-1)	
	980/24		393 (400-½)	980/50 393 (400-1)
	1100-1	501 (600-1)	1120-1½ 521 (600-1½)	1160-2 561 (600-2)



SE-1, 11 MAR 2010 to 08 APR 2010

SE-1, 11 MAR 2010 to 08 APR 2010