

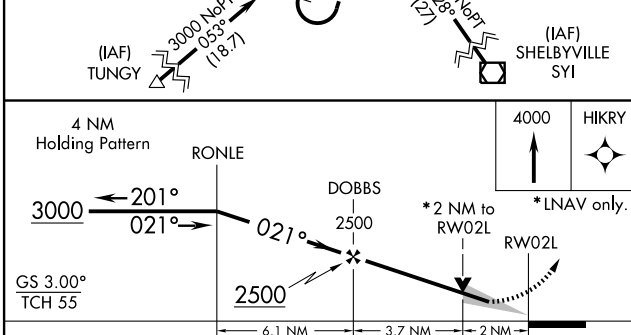
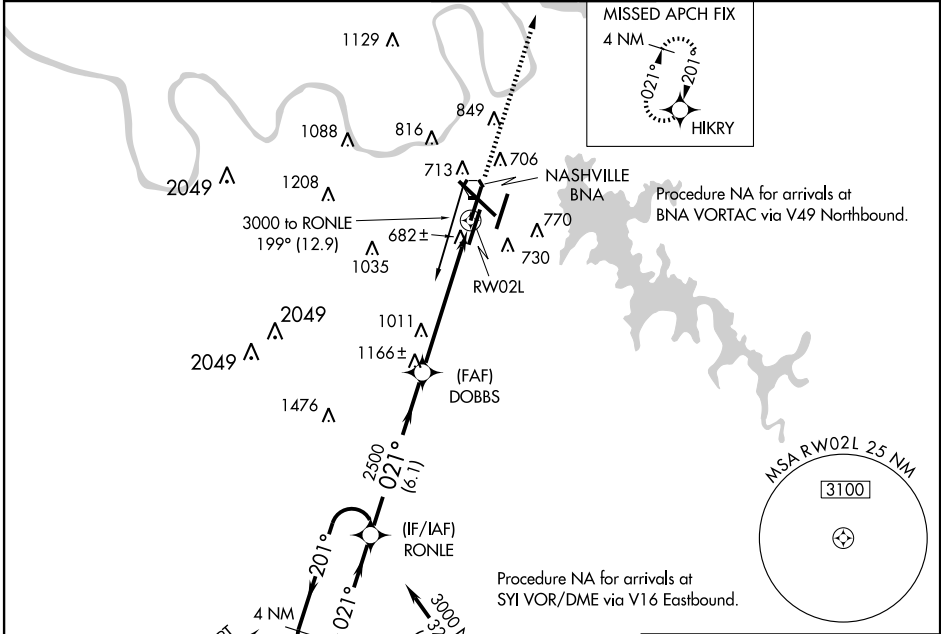
WAAS CH <b>42713</b> <b>W02A</b>	APP CRS <b>021°</b>	Rwy Idg TDZE Apt Elev	<b>7702</b> <b>599</b> <b>599</b>
--	------------------------	-----------------------------	---

# RNAV (GPS) Y RWY 2L

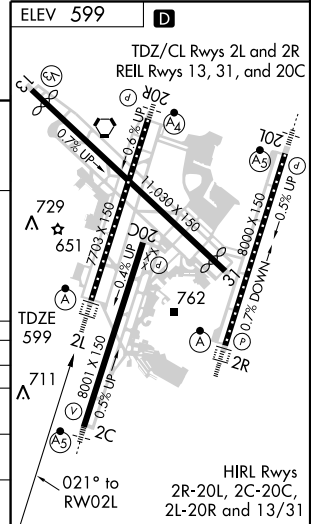
NASHVILLE INTL (BNA)

<p>▼ For uncompensated Baro-VNAV systems, LNAV/VNAV NA below -16°C (4°F) or above 48°C (118°F).</p> <p>▲ DME/DME RNP-0.3 NA.</p>	<p>ALSF-2</p>	<p>MISSED APPROACH: Climb to 4000 direct HIKRY and hold, continue climb-in-hold to 4000.</p>
--	---------------	--

<p>ATIS <b>135.1</b></p>	<p>NASHVILLE APP CON 200°-018° <b>120.6 387.0</b> 019°-199° <b>127.175 360.7</b></p>	<p>NASHVILLE TOWER <b>118.6 257.8</b></p>	<p>GND CON <b>121.9 348.6</b></p>	<p>CLNC DEL <b>126.05</b></p>
------------------------------	--	---	---------------------------------------	-----------------------------------



CATEGORY	A	B	C	D
LPV DA		799/24	200 (200-½)	
LNAV/VNAV DA		999/40	400 (400-¾)	
LNAV MDA	1280/24	681 (700-½)	1280-1½ 681 (700-1½)	1280-1¾ 681 (700-1¾)
CIRCLING	1280-1	681 (700-1)	1280-2 681 (700-2)	1280-2¼ 681 (700-2¼)



SE-1, 11 MAR 2010 to 08 APR 2010

SE-1, 11 MAR 2010 to 08 APR 2010