

WAAS CH 65913 W31A	APP CRS 316°	Rwy Idg TDZE Apt Elev	9487 577 599
--	------------------------	-----------------------------	---

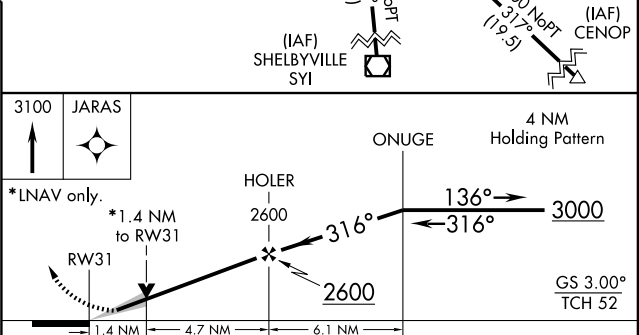
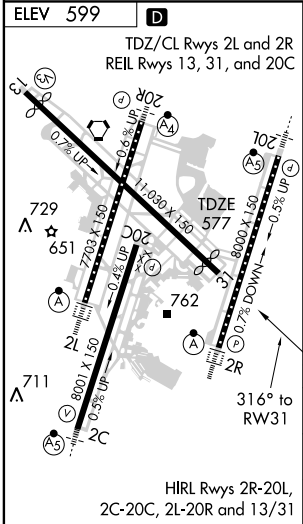
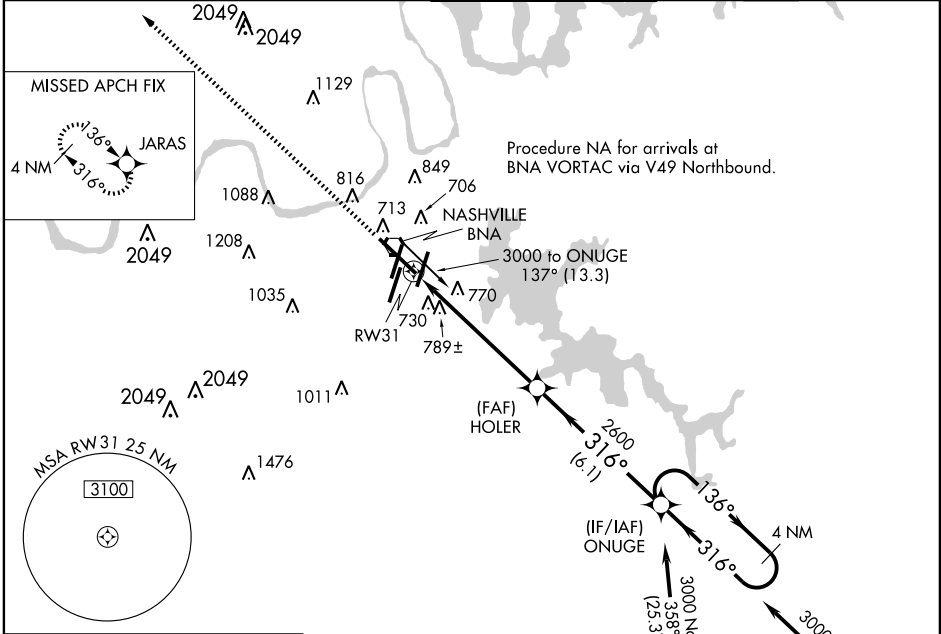
RNAV (GPS) Y RWY 31

NASHVILLE INTL (BNA)

▼ For uncompensated Baro-VNAV systems, LNAV/VNAV NA below -16°C (4°F) or above 48°C (118°F).
DME/DME RNP-0.3 NA.

MISSED APPROACH: Climb to 3100 direct JARAS and hold.

ATIS 135.1	NASHVILLE APP CON 200°-018° 120.6 387.0 019°-199° 127.175 360.7	NASHVILLE TOWER 118.6 257.8	GND CON 121.9 348.6	CLNC DEL 126.05
----------------------	---	---------------------------------------	-------------------------------	---------------------------



CATEGORY	A	B	C	D
LPV DA		777-3/4	200 (200-3/4)	
LNAV/VNAV DA		1060-1 3/4	483 (500-1 3/4)	
LNAV MDA	1060-1	483 (500-1)	1060-1 1/4 483 (500-1 1/4)	1060-1 1/2 483 (500-1 1/2)
CIRCLING	1100-1	501 (600-1)	1120-1 1/2 521 (600-1 1/2)	1160-2 561 (600-2)

SE-1, 11 MAR 2010 to 08 APR 2010

SE-1, 11 MAR 2010 to 08 APR 2010