

# ILS or LOC RWY 6

POUGHKEEPSIE / DUTCHESS COUNTY (POU)

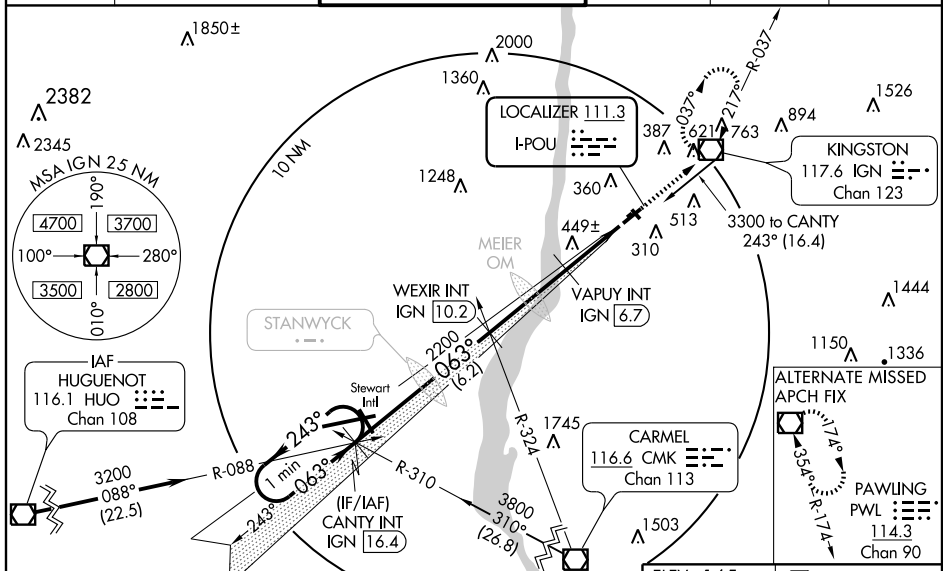
LOC I-POU <b>111.3</b>	APP CRS <b>063°</b>	Rwy Idg TDZE Apt Elev	<b>5001</b> <b>156</b> <b>165</b>
---------------------------	------------------------	-----------------------------	---

⚠ Visibility reduction by helicopters NA. When local altimeter setting not received, use Montgomery altimeter setting and increase DA 71 feet and MDA 80 feet, increase VAPUY fix minimums: S-LOC 6 Cat D and circling Cat B, C, and D visibility 1/4 mile. Inoperative table does not apply to S-ILS 6 all Cats and S-LOC 6 Cats A, B and VAPUY fix minimums S-LOC 6 Cats A, B. For inoperative MALSRS, increase VAPUY fix minimums S-LOC 6 Cat C visibility to 1/4 mile. For inoperative MALSRS, when using Montgomery altimeter setting, increase S-ILS 6 all Cats visibility to 1/4. \*\*DME from IGN VOR/DME.

MALSRS

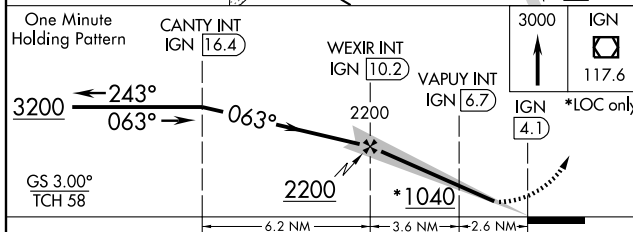
MISSED APPROACH: Climb to 3000 direct IGN VOR/DME and hold, continue climb-in-hold to 3000.

ATIS <b>126.75</b>	NEW YORK APP CON <b>132.75 363.1</b>	DUTCHESS COUNTY TOWER * <b>124.0 (CTAF) 269.15</b>	GND CON <b>121.8</b>	CLNC DEL <b>121.8</b>	UNICOM <b>122.95</b>
-----------------------	---	---	-------------------------	--------------------------	-------------------------



NE-2, 19 NOV 2009 to 17 DEC 2009

NE-2, 19 NOV 2009 to 17 DEC 2009



ELEV 165

3000 IGN 117.6

IGN 4.1

\*LOC only

212±

264

33

227±

063° 6.2 NM from FAF

MIRL Rwy 15-33

HIRL Rwy 6-24

REIL Rws 24 and 33

FAF to MAP 6.2 NM

Knots	60	90	120	150	180
Min:Sec	6:12	4:08	3:06	2:29	2:04

CATEGORY	A	B	C	D
S-ILS 6	469-1		313 (400-1)	
S-LOC 6	1040-1	884 (900-1)	1040-2 1/4 884 (900-2 1/4)	1040-2 1/2 884 (900-2 1/2)
CIRCLING	1040-1 1/4	875 (900-1 1/4)	1040-2 3/4 875 (900-2 3/4)	1040-3 875 (900-3)
VAPUY FIX MINIMUMS **				
S-LOC 6	640-1		484 (500-1)	
CIRCLING	760-1 595 (600-1)	840-1 675 (700-1)	840-2 675 (700-2)	840-2 1/4 675 (700-2 1/4)

# ILS or LOC RWY 6