

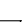


# RNAV (GPS) RWY 6

POUGHKEEPSIE / DUTCHESS COUNTY (POU)

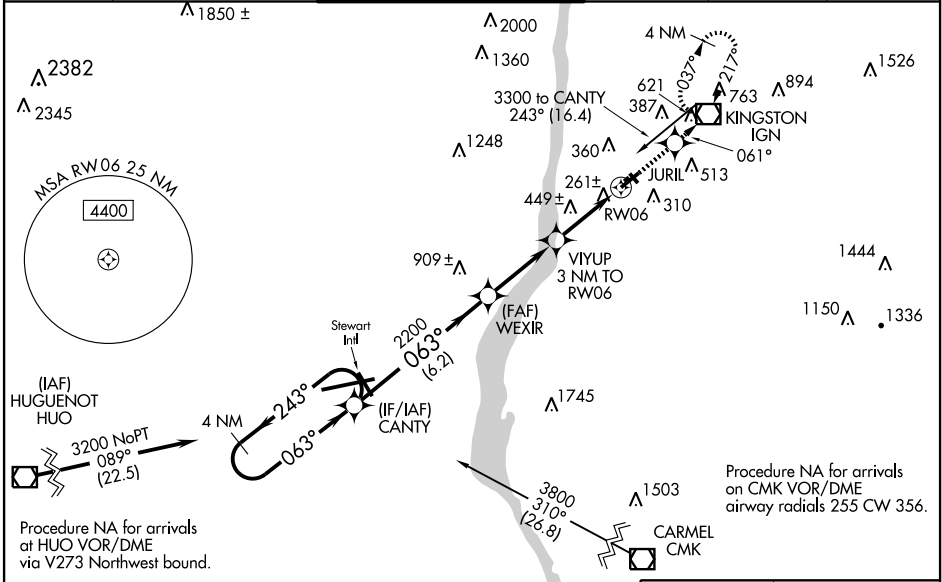
WAAS CH <b>42910</b> <b>W06A</b>	APP CRS <b>063°</b>	Rwy Idg TDZE <b>156</b> Apt Elev <b>165</b>	<b>5001</b>
--	------------------------	---	-------------

**⚠** Inoperative table does not apply to LNAV Cats A and B. Baro-VNAV NA when using Montgomery altimeter setting. For uncompensated Baro-VNAV systems, LNAV/VNAV NA below -15°C (5°F) or above 49°C (120°F). DME/DME RNP-0.3 NA. Visibility reduction by helicopters NA. When local altimeter setting not received, use Montgomery altimeter setting and increase all DA 71 feet and MDA 80 feet, and increase LNAV/VNAV all Cat, LNAV Cats C, D and Circling Cat B, C, D visibility ¼ mile. For inoperative MALS, when using Montgomery altimeter setting, increase LPV all Cats visibility to 1 ½ mile.

**MALS**   

**MISSED APPROACH:** Climb to 3000 direct JURIL and via 061° track to IGN VOR/DME and hold, continue climb-in-hold to 3000.

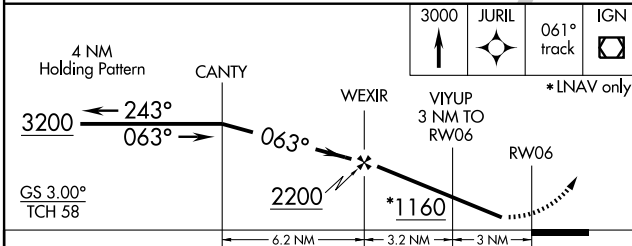
ATIS <b>126.75</b>	NEW YORK APP CON <b>132.75 363.1</b>	DUTCHESS COUNTY TOWER * <b>124.0 (CTAF) 0 269.15</b>	GND CON <b>121.8</b>	CLNC DEL <b>121.8</b>	UNICOM <b>122.95</b>
-----------------------	---	---	-------------------------	--------------------------	-------------------------



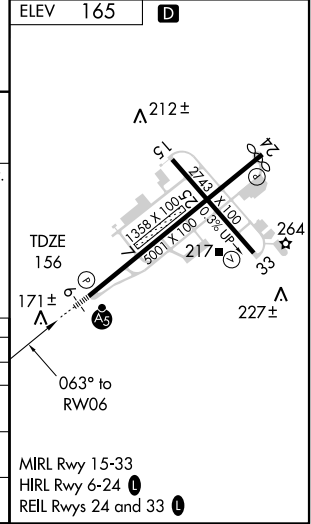
NE-2, 11 MAR 2010 to 08 APR 2010

NE-2, 11 MAR 2010 to 08 APR 2010

ELEV 165	<b>D</b>
----------	----------



CATEGORY	A	B	C	D
LPV DA		503-1	347 (400-1)	
LNAV/VNAV DA		738-1 ½	582 (600-1 ½)	
LNAV MDA		740-1 584 (600-1)	740-1 ¼ 584 (600-1 ¼)	
CIRCLING	760-1 595 (600-1)	840-1 675 (700-1)	840-2 675 (700-1)	840-2 ¼ 675 (700-2 ¼)



# RNAV (GPS) RWY 6