

RNAV (GPS) RWY 11

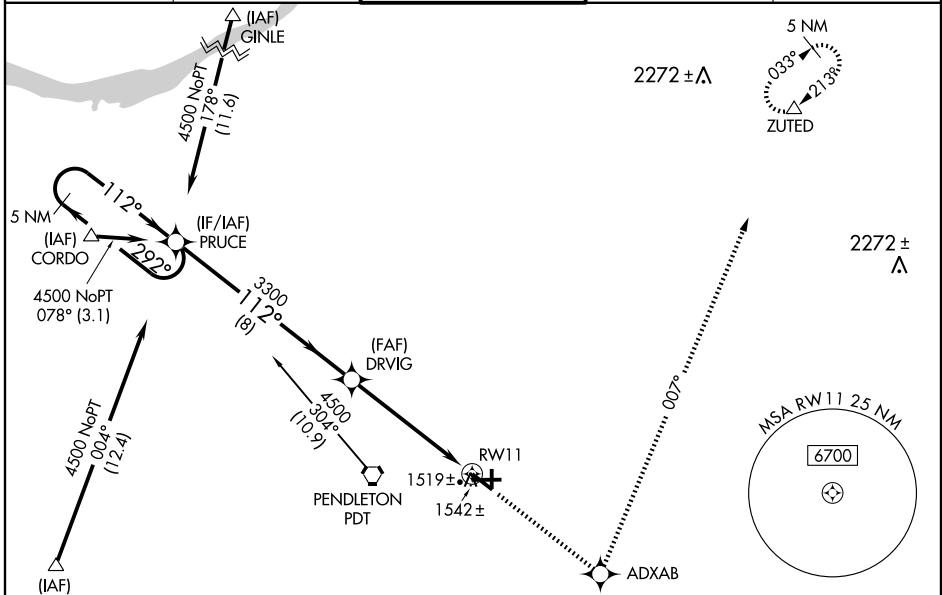
PENDLETON/ EASTERN OREGON RGNL AT PENDLETON (PDT)

WAAS CH 82712 W11A	APP CRS 112°	Rwy Idg TDZE 5581 1487	Apt Elev 1497
--	------------------------	--	-------------------------

⚠ For uncompensated Baro-VNAV systems, LNAV/VNAV NA below -17°C (2°F) or above 46°C (114°F). DME/DME RNP-0.3 NA.
⚠ When local altimeter setting not received, use Walla Walla altimeter setting: increase all DA/MDA 120 feet and visibility LPV all Cats ¼ mile, LNAV/VNAV all Cats ½ mile, LNAV Cats C and D ¼ mile and Circling Cat D ¼ mile. VDP and Baro-VNAV NA when using Walla Walla altimeter setting.

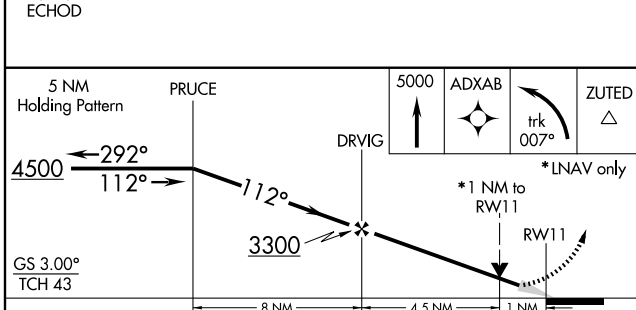
MISSED APPROACH: Climb to 5000 direct ADXAB and left turn via track 007° to ZUTED and hold.

ASOS 118.325	CHINOOK APP CON * 133.15 379.15	PENDLETON TOWER * 119.7 (CTAF) 257.8	GND CON 121.9 257.8	UNICOM 122.95
------------------------	---	--	-------------------------------	-------------------------



NW-1, 19 NOV 2009 to 17 DEC 2009

NW-1, 19 NOV 2009 to 17 DEC 2009



ELEV 1497	D
TDZE 1487	91' x 60'
6301 X 150'	5381 X 120'
1612	1601
1559	134
1612	1601
1559	134
1612	1601
1559	134

REIL Rwy 11 and 29
MIRL Rwy 11-29
HIRL Rwy 7-25

RNAV (GPS) RWY 11