


RNAV (GPS) RWY 25

PENDLETON/ EASTERN OREGON RGNL AT PENDLETON (P'DT')

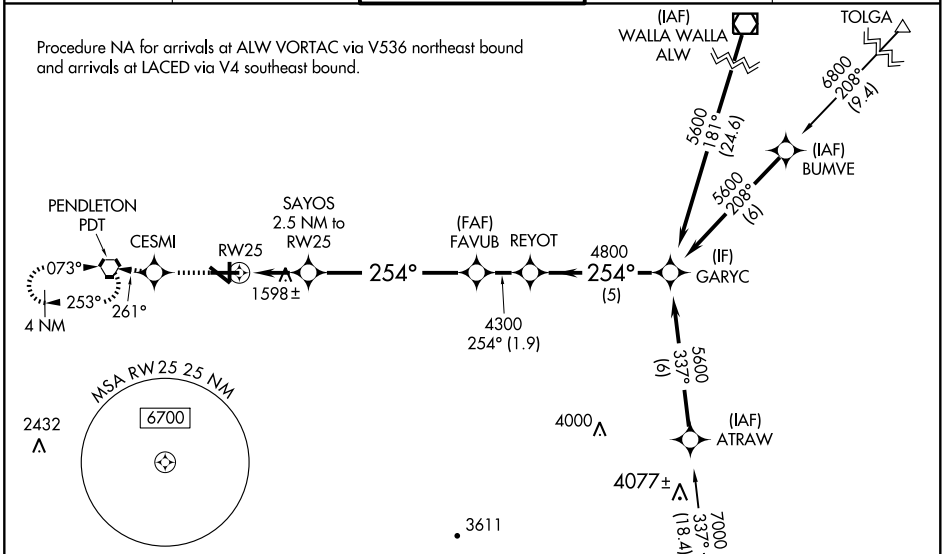
WAAS CH 78412 W25A	APP CRS 254°	Rwy Idg TDZE 1487 Apt Elev 1497	6301
--	------------------------	---	-------------

⚠ For inoperative MALSR, increase LNAV/VNAV Cat D visibility to RVR 5000, and LNAV Cat D to RVR 6000.
⚠ For uncompensated Baro-VNAV systems, LNAV/VNAV NA below -17°C (2°F) or above 46°C (114°F). DME/DME RNP-0.3 NA.
 When local altimeter setting not received, use Walla Walla altimeter setting and increase all DA/MDA 120 feet, and all visibilities 1 mile; inoperative table does not apply.
 VDP and Baro-VNAV NA when using Walla Walla altimeter setting.

MALSR


MISSED APPROACH: Climb to 4000 direct CESMI and via track 261° to PDT VORTAC and hold, continue climb-in-hold to 4000.

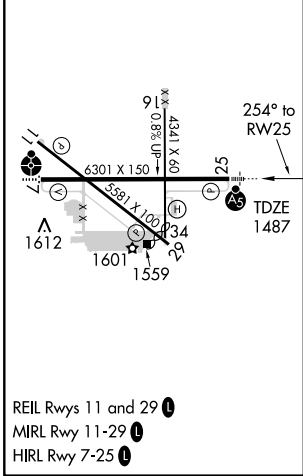
ASOS 118.325	CHINOOK APP CON* 133.15 379.15	PENDLETON TOWER* 119.7 (CTAF) 0 257.8	GND CON 121.9 257.8	UNICOM 122.95
------------------------	--	---	-------------------------------	-------------------------



NW-1, 19 NOV 2009 to 17 DEC 2009

NW-1, 19 NOV 2009 to 17 DEC 2009

ELEV 1497	D
-----------	----------



4000	CESMI	trk 261°	PDT	VGSi and RNAV glidepath not coincident.
<p>*LNAV only</p> <p>SAYOS 2.5 NM to RW25</p> <p>FAVUB</p> <p>REYOT</p> <p>GARYC</p> <p>254°</p> <p>5600</p> <p>Procedure Turn NA</p> <p>GS 3.00°</p> <p>TCH 55'</p>				
<p>1.1 NM 1.4 NM 6 NM 1.9 NM 5 NM</p>				

CATEGORY	A	B	C	D
LPV DA	1687/24 200 (200-½)			
LNAV/VNAV DA	1800/24	313 (400-½)		1800/40 313 (400-¾)
LNAV MDA	1860/24	373 (400-½)		1860/50 373 (400-1)
CIRCLING	1920-1 423 (500-1)	1960-1 463 (500-1)	1960-1½ 463 (500-1½)	2060-2 563 (600-2)