

# RNAV (GPS) RWY 29

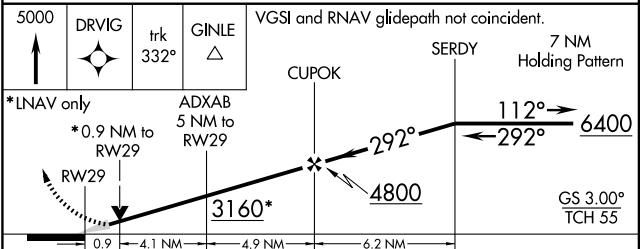
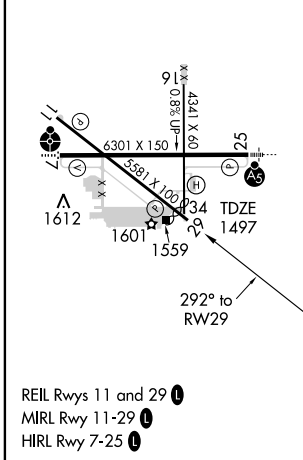
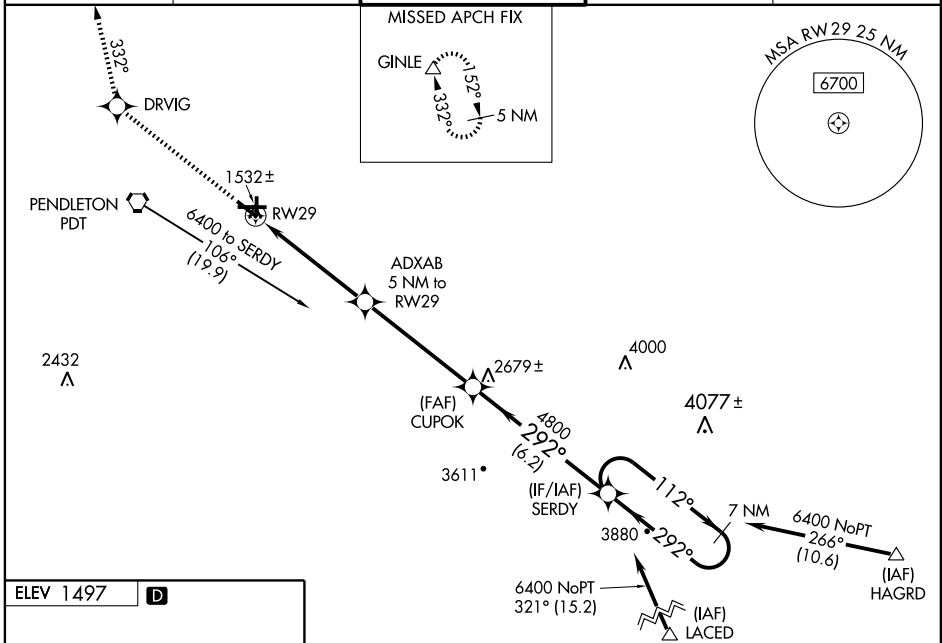
PENDLETON/EASTERN OREGON RGNL AT PENDLETON (PDT)

WAAS CH <b>42513</b> <b>W29A</b>	APP CRS <b>292°</b>	Rwy Idg <b>5125</b> TDZE <b>1497</b> Apt Elev <b>1497</b>
--	------------------------	---

**▼** Inoperative table does not apply.  
**▲** For uncompensated Baro-VNAV systems, LNAV/VNAV NA below -17°C (2°F) or above 46°C (114°F). DME/DME RNP-0.3 NA.  
 When local altimeter setting not received, use Walla Walla altimeter setting: increase all DA/MDA 120 feet and visibility LPV all Cats ¼ mile, LNAV/VNAV all Cats ½ mile, LNAV Cats C and D ¼ mile and Circling Cat D ¼ mile. VDP and Baro-VNAV NA when using Walla Walla altimeter setting.

MISSED APPROACH: Climb to 5000 direct DRVIG and via track 332° to GINLE and hold.

ASOS <b>118.325</b>	CHINOOK APP CON * <b>133.15 379.15</b>	PENDLETON TOWER * <b>119.7 (CTAF) 0 257.8</b>	GND CON <b>121.9 257.8</b>	UNICOM <b>122.95</b>
------------------------	---	--	-------------------------------	-------------------------



CATEGORY	A	B	C	D
LPV DA		1747-1	250 (300-1)	
LNAV/VNAV DA		1801-1	304 (400-1)	
LNAV MDA		1860-1	363 (400-1)	1860-1½ 363 (400-1½)
CIRCLING	1920-1	1960-1	1960-1½	2060-2
	423 (500-1)	463 (500-1)	463 (500-1½)	563 (600-2)

# RNAV (GPS) RWY 29

NW-1, 19 NOV 2009 to 17 DEC 2009

NW-1, 19 NOV 2009 to 17 DEC 2009